



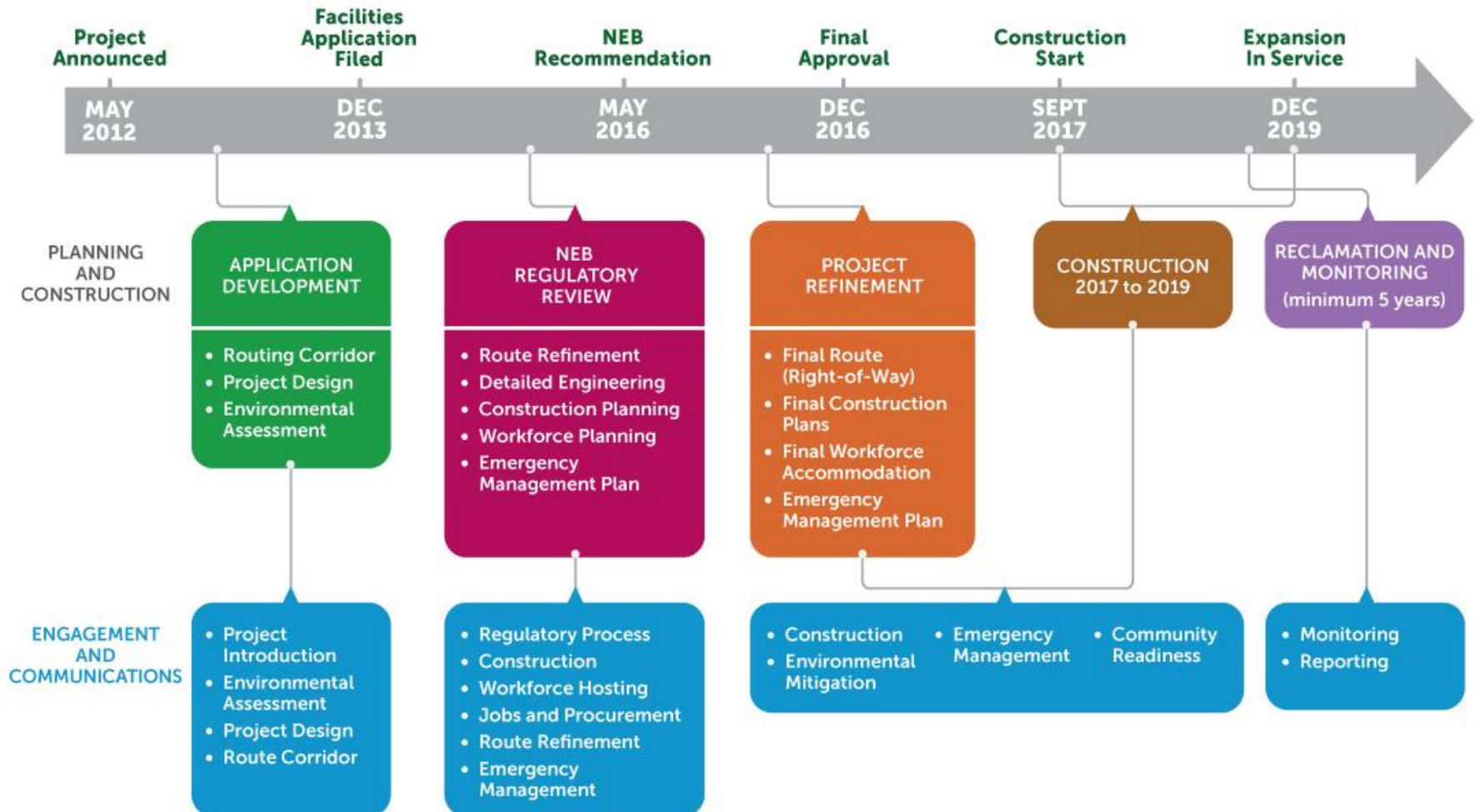
Trans Mountain Expansion Project Overview

Proposed Expansion Project



- \$6.8-billion capital cost
- Expand capacity to 890,000 bpd
- Project scope
 - 980 kms new pipe
 - 12 new pump stations
 - 19 new tanks
 - 3 new tanker berths
- Increase in tanker traffic – not tanker size
- Westridge and Burnaby Terminals construction
- Must meet 157 NEB conditions

Trans Mountain Expansion Schedule

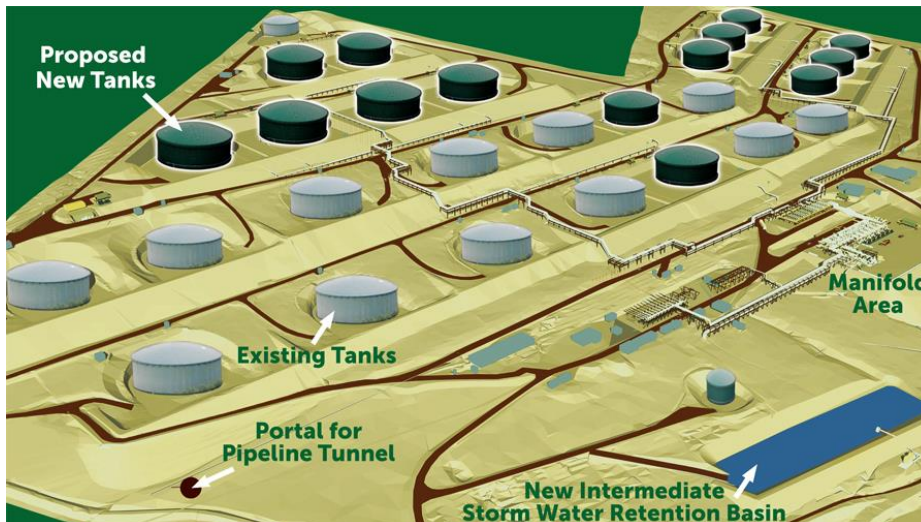


This schedule is subject to change based on detailed construction planning and regulatory timelines.

Proposed Burnaby Terminal Layout



Burnaby Terminal today



Burnaby Terminal proposed, for illustrative purposes only

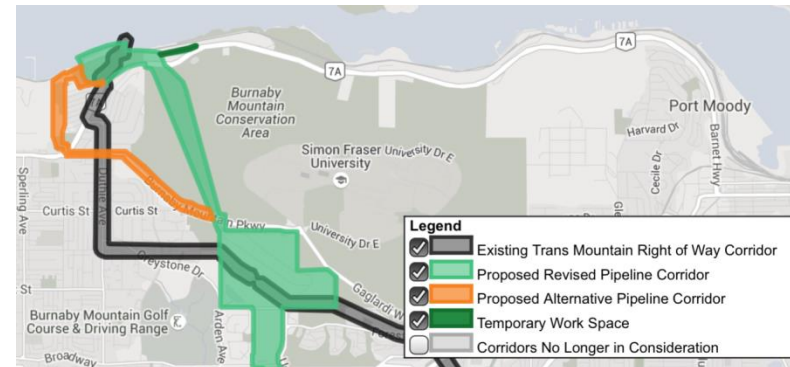
- No new land required – expansion within existing property
- Proposed total of 26 tanks with secondary containment systems
- Fire protection and emergency response equipment
- New pipelines and piping
- Expanded manifold and metering equipment

Proposed Burnaby Mountain Tunnel



Westridge Delivery Pipeline

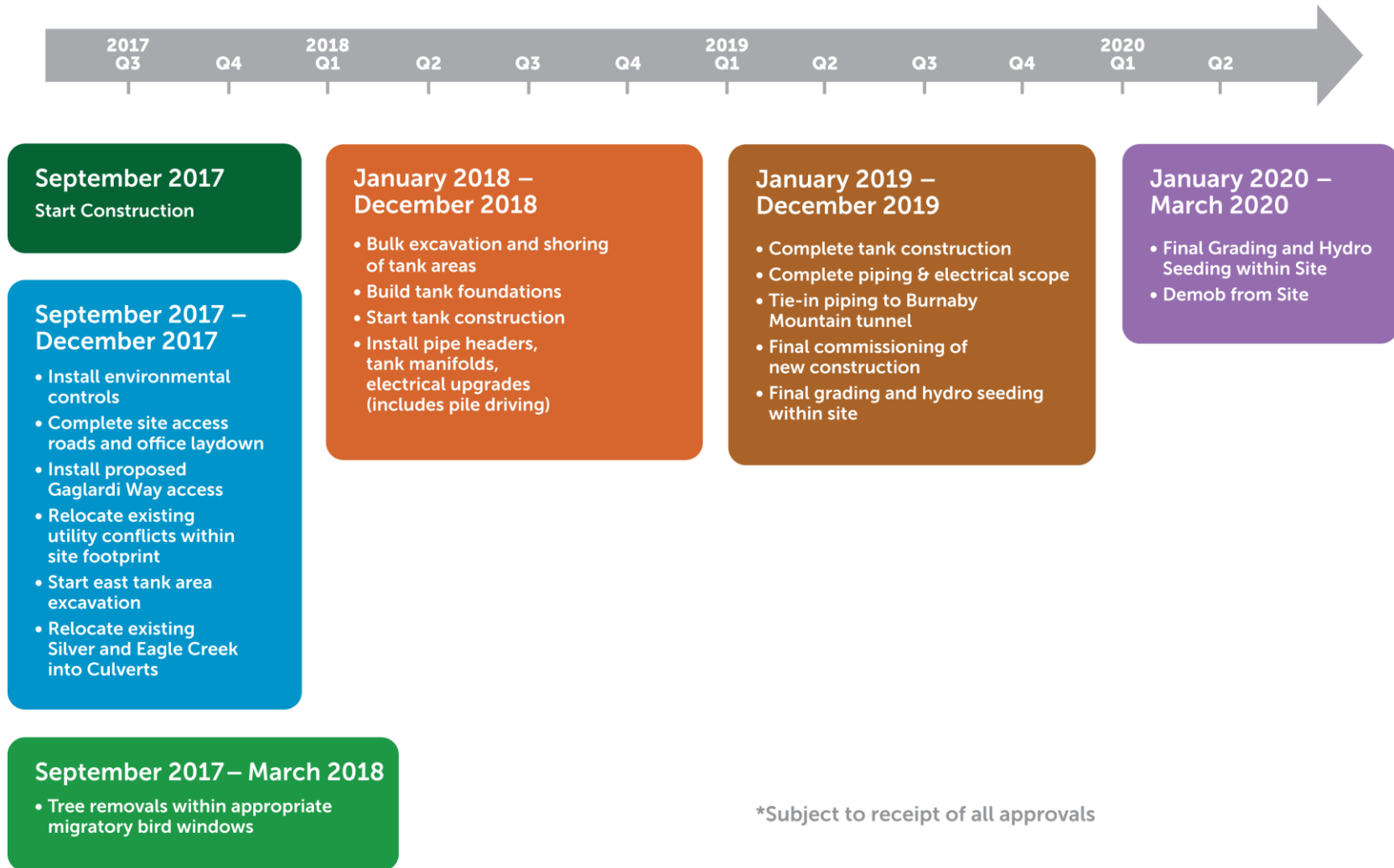
- Expansion requires two new 30" pipelines between Westridge and Burnaby terminals to load vessels
- Avoids construction through residential neighbourhoods
- A result of input and feedback received
- Tunnel portals on existing Trans Mountain facilities will reduce construction impact to neighbours
- Existing pipeline may be moved to tunnel, subject to separate regulatory application
- Alternate corridor through city streets remains until approval received and detailed design and engineering completed





Detailed Design, Construction Plans and Schedule: Burnaby Terminal

Burnaby Terminal Construction Schedule*



*Subject to receipt of all approvals

Construction: Anticipated Work Hours

- Monday to Friday, 7 am – 6 pm
- Saturday work possible, 9 am – 6pm
- Limited night work, reduced noise

Burnaby Terminal: Tank Colour



Sumas Terminal



Burnaby Terminal

- Industry standard: white tanks reflect colour and reduce potential odours
- Burnaby tanks are painted green to blend in with the mountain setting
- Odour mitigation manages odours for existing operations, all new tanks will have odour abatement installed
- Proposed tank colour for Burnaby Terminal is green



Detailed Design, Construction Plans and Schedule: Burnaby Mountain Tunnel

Scope

- Excavate and support 2.6 km of 4-m diameter tunnel
- Excavation will be via Tunnel Boring Machine (TBM)
- Boring direction: Westridge to Burnaby Terminal
- Ground support will be precast concrete
- Portal excavation and support for launch and reception
- Install pipelines
- Backfill tunnel with grout

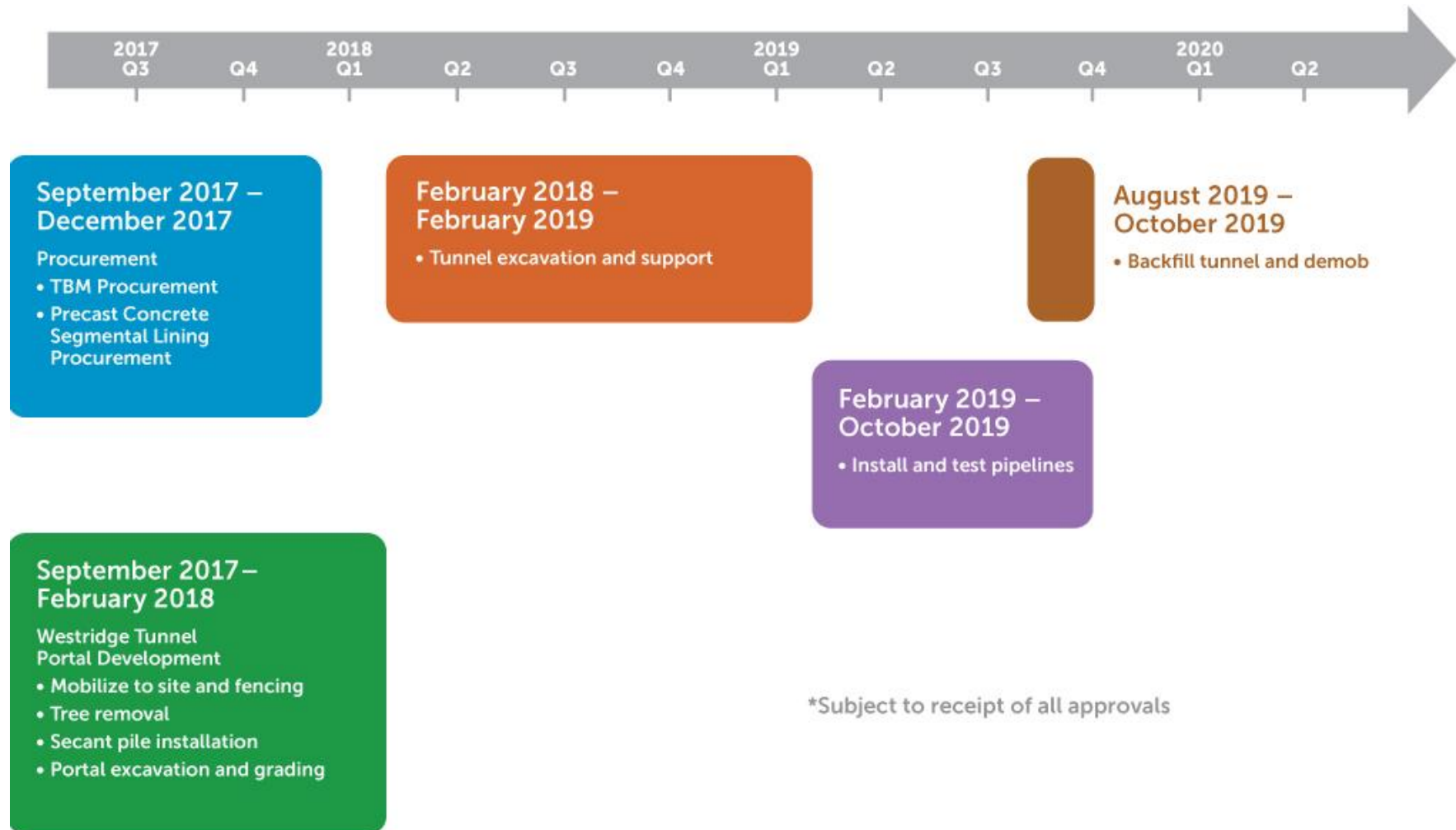


Images for illustrative purposes only

Tunnel Construction: Hours of Work

- Five days per week
- Three shifts per day
 - Two production shifts
 - One Maintenance shifts
- Weekend work
 - Maintenance and/or extra production

Tunnel Construction Schedule*



Complaints Management Process: Principles



- Goals:
 - Address stakeholder concerns in a timely manner
 - Meet regulatory obligations
- Objectives and principles:
 - Provide multiple communication channels to address stakeholder communication needs
 - Promote process and communication channels through signage, print, online and social media as well as paid and unpaid media
 - Email, phone and voicemail access
 - Maintain a clear and discrete process for all emergency concerns and complaints
 - Provide contractors with process information
 - Ensure all inquiries and complaints receive timely responses
 - Track and report on all inquiries and complaints
 - Emergency contact availability at all times