



Traffic Management

Burnaby Terminal Traffic Management



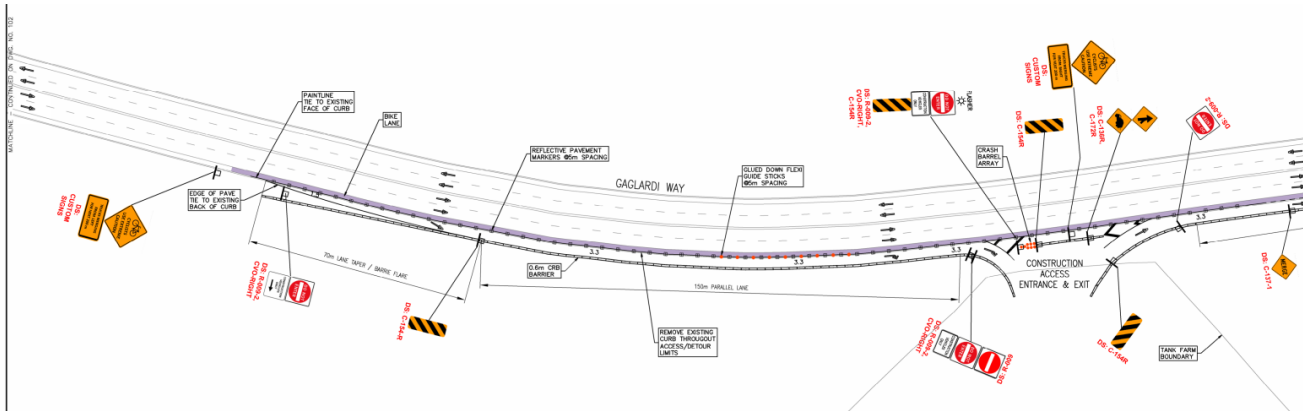
- Traffic management plans will be developed to reduce impacts of construction
- Construction workers will arrive by bus from central parking area off-site
 - Primarily disposing of excess excavated material on-site (*reduction of more than 30,000 loads of material not being hauled off-site*)

Site Access: 8099 Shellmont Street Gate



- Local residential traffic access maintained
- Truck traffic staged on Underhill Avenue north of Forest Grove Drive
- Trucks parked with engines off
- Ensure Trans Mountain Trail is accessible for pedestrians
- Trucks controlled by flag people outside of the terminal

Proposed Site Access: Gaglardi Way



- Reduce construction traffic in residential area south of Burnaby Terminal
- Meets Trans Mountain commitment to City of Burnaby for two direction emergency access into the site
- Traffic will avoid SFU property