

Trans Mountain aims to minimize disruption to our neighbours during construction. We will develop a comprehensive construction communications plan that will include input gathered through ongoing engagement. A construction liaison will be available.

## Noise Mitigation

- Complete studies to confirm construction noise will be within allowable parameters
- Best practices during construction to minimize potential impacts:
  - Alternate vehicle backup alarms during night work
  - Noise suppression on heavy equipment
  - Strategically-located sound walls for neighbours, as required
- Construction hours will meet expectations outlined in applicable local or provincial permits and noise bylaws, where practical
  - Typical working hours: Weekdays 7 am – 6 pm, Saturday optional 9 am – 6 pm
  - Tunnel boring operations will occur 24/7
  - Minimized night shifts during construction, with reduced lighting and activities that cause noise
- Pile Driving
  - Limited to daytime shifts only
  - Noise control techniques for in-water pile driving to minimize noise at Westridge Marine Terminal
  - Shrouds around pile driving equipment to reduce noise impact



*Example of noise control shroud (marine environment)*



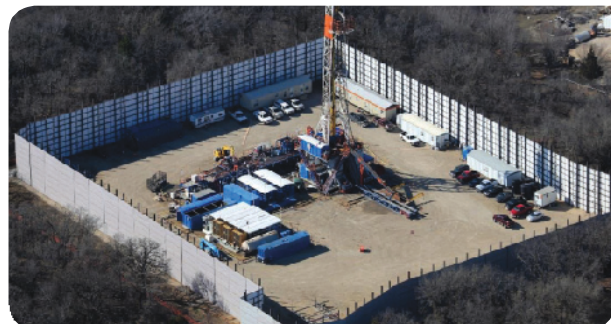
*Example of directional work lighting*

## Light Mitigation

- Directional lighting, diffusion, coating on bulbs and turning off lights when not in use
- Some lights may be left on during night hours for security reasons

## Dust Suppression

- Tire wash for vehicles leaving the construction site
- Dust suppression on temporary roads and construction areas
- All trucks transporting granular materials to or from construction sites will be covered
- Street sweeper will maintain access roads
- Hydroseed stockpiles and completed work areas



*Example of a sound wall*