

INDIGENOUS MONITOR OVERVIEW REPORT

Month: August 2021

Indigenous Monitor days on-site: 23

Project Region: Fraser Valley

**Kilometre Posts (KPs) monitored:
1075.10–KP 1158**

Indigenous Monitors on the Trans Mountain Expansion Project – Overview

The Trans Mountain Expansion Project (the Project or TMEP) is retaining Indigenous Monitors as integrated members of its construction Environmental Inspection team. Indigenous Monitors work with Environmental Inspectors to monitor compliance with mitigation measures to minimize impacts to traditional resource use and cultural/heritage impacts during construction. Indigenous Monitors have a strategic role in providing traditional knowledge directly and pragmatically to construction oversight practices and bring an Indigenous lens to daily environmental inspection activities.

This Overview Report provides highlights of the Indigenous Monitors' day-to-day work and key mitigation measures observed by the Monitors related to Project construction in the Lower Mainland. The purpose of this report is to provide an update on Indigenous Monitor activity to Indigenous groups.

During this reporting period, key Project activities in the Fraser Valley region involving Indigenous Monitors included construction on Spread 6/7A and at Sumas Terminal. Activities included construction biosecurity and weed management, pre-construction wildlife surveys and planning for wildlife management, construction housekeeping and spill response, construction contact water management and pre-construction walkthroughs for Traditional Land Use (TLU) sites, and Environmental Protection Rules. The Project Construction Progress Report (Condition 106) for August 2021, which reports environmental events and deficiencies in Tables 4 and 5 respectively, is found [here](#).

The Project has a process for sharing information related to potential TLU and Heritage Resource chance finds during construction. The Protecting TLU and Cultural Heritage Resources Fact Sheet ([link here](#)) provides an overview of the chance find communication process. Applicable Indigenous groups are notified and engaged directly on potential chance finds.

For more information: email info@transmountain.com or call 1.866.514.6700.

Trans Mountain COVID-19 – Our Response

Trans Mountain is actively monitoring the COVID-19 situation with the help of federal, provincial and local agencies. Trans Mountain's top priority remains the health and safety of its workforce, their families, and our communities.

For more information: transmountain.com/covid19

Biosecurity and Invasive Weed Management

Biosecurity measures are designed to reduce the introduction or spread of noxious weeds and soil pathogens from construction activities. Environmental mitigations manage the risks associated with invasive, noxious and prohibited weeds at active construction areas that include equipment and tire washing and disinfecting stations as well as regular cleaning inspections of equipment and vehicles.

During pre-construction activities, weed surveys are conducted, and information on the presence or absence of noxious weeds is collected. This information is used in part to determine the required quantity and placement of biosecurity washing stations on future construction sites. Biosecurity measures like tire washing stations are required when the risk of spreading or introducing noxious weeds is present in an area.

The Indigenous Monitor and the Environmental Inspector monitored between KP 1155.0 and KP 1158.0, which had been categorized in historical Project data as a weed-free zone. During the inspection, various invasive weed species like Himalayan Blackberry and Canadian Thistle were discovered. Subsequently, the Trans Mountain Resource Specialist will conduct a detailed weed survey of the area. The data collected will assist with biosecurity planning to mitigate the potential transfer of noxious weeds from site to site.



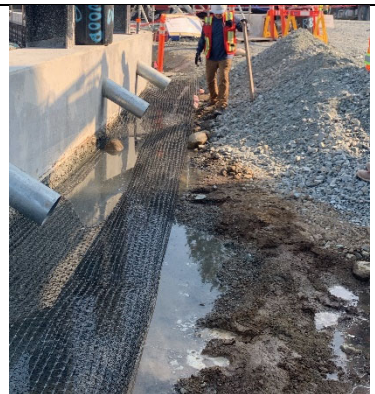
Himalayan Blackberry bush located at KP 1156.

Construction Contact Water Management

During construction, water that accumulates on-site due to stormwater, ground seepage or equipment washing is considered either contact water (water exposed to construction areas) or non-contact water (water not exposed to construction areas).

At Sumas Terminal, the Indigenous Monitor observed contact water pooling in the Tank 104 construction area. The Environmental Inspector was notified and the contractor deployed a hydrovac to remove the contact water and deliver it to the water treatment plant on-site. Before the hydrovac arrived, the Indigenous Monitor and Environmental Inspector conducted a sweep to confirm no amphibians had been attracted to the pooling water. No amphibians or other wildlife were discovered.

The Indigenous Monitor will continue to monitor the Tank 104 construction area for accumulated contact water and will observe the mitigations installed by the contractor.



Sweeping for amphibians in the Tank 104 area before pooling water is removed by hydrovac.

TMEP Indigenous Monitor Cultural Presentations

Indigenous Monitors are integrated members of the TMEP Environmental Inspection team and work together with TMEP project management representatives, site construction contractor personnel and Trans Mountain resource specialists. One important aspect of this collaboration is to create two-way dialogue and to learn from the Indigenous Monitors about their community, culture, history, territory, work experience and many other areas.

In July and August, the Indigenous Monitor working at Burnaby Terminal and Sumas Terminal delivered presentations they had prepared about their community, territory, history and previous work experience. The presentations were delivered multiple times to Trans Mountain and contractor personnel. These efforts provided another platform for team members to learn from each other, enhance cultural awareness and support skill development for the Indigenous Monitors.



Both presentations explained the ancient and current use of cedar bark. Above photo is a contemporary hat woven from cedar.

Preconstruction Wildlife Surveys and Planning for Wildlife Management

Outstanding environmental feature baseline surveys and assessments for wildlife habitat features are being completed in the Fraser Valley prior to the commencement of construction, as outlined in the Trans Mountain Pipeline ULC Pipeline Environmental Protection Plan. The key results of the surveys and assessments will be taken into consideration for the pipeline construction environmental planning and determination of wildlife species salvage and exclusion mitigations. Subsequent Fraser Valley pre-construction activity in the upcoming months will involve flagging and staking buffers around the identified features.

In August, the Indigenous Monitor observed the Trans Mountain Wildlife Resource Specialist conduct assessments of potential breeding and overwintering habitat for amphibians and other wildlife, like the Giant Salamander, the Pacific Water Shrew, Mountain Beaver and Oregon Forest snail. Assessments included the extent of wildlife critical habitat, potential salvage relocation sites and locations to install wildlife exclusion fencing. These assessments will also help determine the discovery and management of Wildlife Species of Concerns or provincially protected species listed under provincial permits. This data will also inform wildlife salvage, relocation and exclusion planning for environmental features adjacent to the ROW during future construction activity.



Potential habitat near KP 1118+300 for the relocation of Oregon Forest snails.



Observing Mountain Beaver habitat near KP 1116+500.

Construction Site Housekeeping (Spill response)

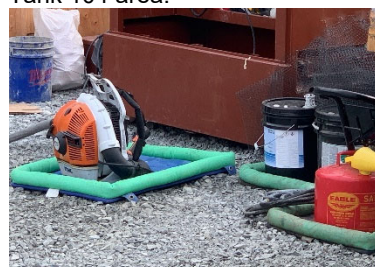
Indigenous Monitors conduct regular site inspections for general housekeeping measures. This includes observing and documenting garbage and recycling disposal, scrap metal management, waste storage and secondary containment of fuel and other hydrocarbons. Secondary containment measures include, but are not limited to, drip trays under inactive vehicles and equipment, and drip trays placed under hydrocarbon containers like gasoline and diesel, and paint aerosol spray cans.

At Sumas Terminal, if a deficiency is observed the contractor is notified immediately. The Indigenous Monitor performs a follow-up inspection to confirm that the contractor has addressed the deficiency within the designated time frame, which is based on severity and risk of the deficiency.

In August at Sumas Terminal, the Indigenous Monitor observed grout spoils from a shockcrete compressor that had overflowed from the secondary containment receptacle and spilled onto the ground at the Tank 104 area northeast corner. The contractor was immediately notified and a hydrovac was deployed to clean up the grout spoils and any contact water in the area.



Good use of secondary containment under a generator used to power sump pump at Tank 104 area.



Good use of secondary containment for equipment, fuel and chemicals at Sumas Terminal.

TMEP Environmental Protection Rules

To support environmental protection goals and to further the culture of environmental awareness, Trans Mountain has established 10 [Environmental Protection Rules](#) (EPRs) for all Trans Mountain employees and contractors to follow at every TMEP worksite. Each rule focuses on preventing significant environmental events. Every individual working on the Project is trained on Environmental Protection Rules in TMEP Level 1 Environmental Training. The program emphasizes the significance of the commitment we have made to communities, regulators and stakeholders when it comes to protecting the environment.

Environmental stewardship and leadership are rewarded through our Environmental Protection Rules Award Program, which include spot awards. In August, the Indigenous Monitor at Sumas Terminal contributed to the nomination and delivery of spot awards to several contractor craft workers, providing recognition to the positive environmental practices they demonstrated in areas like biosecurity and migratory birds.



Biosecurity

Environmental Rule – Biosecurity



Migratory Birds

Environmental Rule – Migratory Birds

Indigenous Monitor Request Dashboard

Indigenous Monitors are provided daily on-site field support from Environmental Inspectors and office support from Indigenous Monitor Coordinators. Indigenous Monitors can also make specific support requests or submit questions through their daily report. Examples include but are not limited to: request for Project reports, input from an environmental resource specialist or on-site support from an Elder or other cultural knowledge holder. Monthly requests and their completion status are noted below.

Status	Rolling Total and Type of Requests				
	Project Reports/ Documents	Environmental Resource Specialists	Elder/Cultural Knowledge Holder	Other	Total
Total	0	2	0	0	2
Fulfilled	-	2	-	-	2
Outstanding	0	0	-	-	0

This report has been reviewed by the active Indigenous Monitor(s)

CONTACT US:

Trans Mountain

✉ info@transmountain.com

☎ 1.866.514.6700

💻 transmountain.com

🐦 @TransMtn

📺 youtube.com/transmtn

🌐

📍 PO Box 81018
Burnaby, BC V5H 3B0

