

INDIGENOUS MONITOR OVERVIEW REPORT

Month: February 2022

Indigenous Monitor days on-site: 24

**Project Region: BC Interior
Spread 5A**

**Kilometre Posts (KPs) monitored:
KP 806–974**

Indigenous Monitors on the Trans Mountain Expansion Project – Overview

The Trans Mountain Expansion Project (the Project or TMEP) has retained Indigenous Monitors as integrated members of its construction Environmental Inspection team. Indigenous Monitors work with Environmental Inspectors to monitor compliance with mitigation measures to minimize impacts to traditional resource use and cultural/heritage sites during construction. Indigenous Monitors have a strategic role in providing traditional knowledge directly and pragmatically to construction oversight practices and bring an Indigenous lens to daily environmental inspection activities.

This Overview Report provides highlights of the Indigenous Monitors' day-to-day work and key mitigation measures observed by the Monitors related to Project construction in the BC Interior Region. The purpose of this report is to provide an update on Indigenous Monitor activity to Indigenous groups.

During this reporting period, key activities in the BC Interior Region involving Indigenous Monitors took place from KP 806 to 974 in Spread 5A and included monitoring temporary construction lands, pre-construction activities, bore pad construction, Traditional Land Use (TLU) and Heritage Resource sites and culturally modified tree chance finds. The Project Construction Progress Report (Condition 106) for February 2022, which reports environmental events and deficiencies in Tables 4 and 5 respectively, is found [here](#).

The Project has a process for sharing information related to potential TLU and Heritage Resource chance finds during construction. The [Protecting TLU and Cultural Heritage Resources Fact Sheet \(link here\)](#) provides an overview of the chance find communication process. Applicable Indigenous groups are notified and engaged directly on potential chance finds.

For more information: email info@transmountain.com or call 1.866.514.6700.

Trans Mountain COVID-19 – Our Response

Trans Mountain is actively monitoring the COVID-19 situation with the help of federal, provincial and local agencies. Trans Mountain's top priority remains the health and safety of its workforce, their families and our communities.

For more information: transmountain.com/covid19

Temporary Construction Lands

Temporary construction lands and infrastructure are defined for the Project as preparatory work areas to support Project construction and include temporary camps, stockpile sites, equipment staging areas and borrow pits, as well as works on access roads within the first 10 km of each designated construction spread. Many of the sites addressed in the Temporary Construction Lands and Infrastructure Environmental Protection Plan are on lands that have been previously developed.

Indigenous Monitors conducted environmental inspections at the Merritt laydown yard. The inspection included observing and documenting general housekeeping, waste management, hazardous materials storage and vehicle and equipment parking.

During the inspection, the Indigenous Monitor identified misplaced debris, garbage and recycling, which was brought forward as a deficiency and addressed. Spill kits were inspected for volume and types of spill response material and to ensure the appropriate placement in relation to work fronts. Drip trays were inspected under stationary equipment to make sure they were present when parked. A drip tray that had accumulated water from snow melt was identified. The deficiency was addressed, and the fluids were properly drained from trays.



Waste management bins requiring disposal.



Secondary containment requiring drainage from snow melt.

Pre-Construction Monitoring

Pre-construction monitoring took place at an access road and approved bridge installation, east of Highway 5 and Coldwater River near KP 968–969.

During pre-construction survey activities, previously identified environmentally sensitive areas are marked with flagging ribbon and stakes by Resource Specialist crews during the environmental flagging and staking program. Signage is also installed to indicate to construction crews where areas are not to be entered.

The Indigenous Monitor inspected the area before construction activities commenced. Ongoing monitoring will be conducted at such sites as construction continues.



Access road of bridge installation at BCVA-246a near KP 968–969.

Bore Pad Construction near Jacko Lake

Near Jacko Lake, crews are constructing a bore pad for trenchless crossing activities. Trenchless crossings are used to safely cross underneath environmentally sensitive areas, minimizing the impact on users and the environment.

At KP 855, matting and fencing of bore pad 4 was inspected. The ground near parked machinery was inspected for surface staining. No concerns were identified. Good housekeeping and proper waste management procedures were identified during the inspection. Environmental features at KP 855 near the active construction area were monitored for continued avoidance, appropriate signage and buffers.

Sediment fencing, culverts and drainage were inspected at access road 4 at KP 855. Repair of sediment fencing was recommended and implemented immediately by the contractor. There were no further concerns identified at this location.



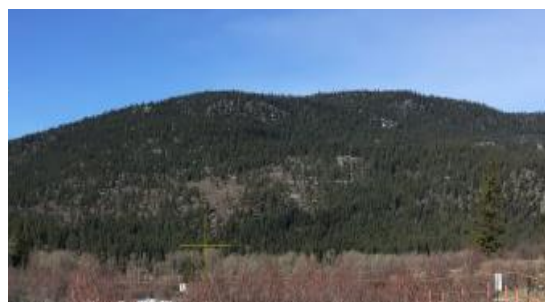
Bore pad construction at KP 855 near Jacko Lake.



Access road 4 at KP 855 near Jacko Lake.

Culturally Modified Trees (CMT)

Near the Coldwater West Alternative Route (the portion of the right-of-way that goes around the Coldwater 1 Reserve), the Indigenous Monitor participated in the implementation of the TLU Site Discovery Contingency Plan in areas where trees were identified as potentially culturally modified. Trees found during a CMT sweep were examined by the Indigenous Monitors and Environmental Inspectors on-site to collect initial information. The area was flagged off for additional evaluation. Resource Specialists and Knowledge Holders of Indigenous Monitors' communities were contacted for evaluation of the tree and potential mitigation. The engagement process with Indigenous groups was initiated to share information about the resource and seek feedback. The tree was determined to be culturally modified. The feature was flagged, a buffer was placed around the tree and continued avoidance was recommended.



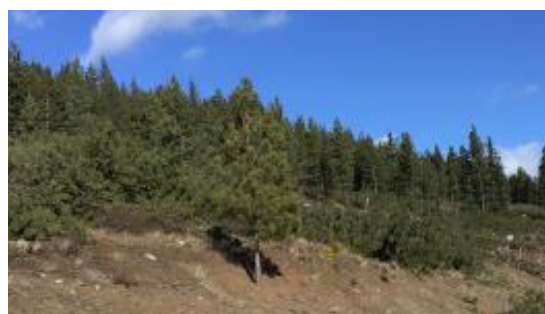
General area near the Coldwater West Alternative Route where CMT sweeps were conducted ahead of clearing activities.

Traditional Land Use (TLU) Sites

Resource Specific Mitigation Tables and Environmental Alignment Sheets are used to identify locations of and summarize specified mitigation for previously identified historical resources and TLU areas. Such locations have been identified via TLU studies conducted by Indigenous groups and archaeology baseline assessments conducted over many years of Project planning.

During pre-construction survey activities, previously identified TLU areas are marked with flagging ribbon and stakes by Resource Specialist crews during the environmental flagging and staking program. Signage is also installed to indicate to construction crews where areas are not to be entered.

Indigenous Monitors inspected TLU areas and archaeological sites to verify the staking and boundaries and continued equipment avoidance. Sites inspected include but are not limited to TLU-34, TLU-35, TLU-36, TLU-37 and TLU-38. Ongoing monitoring by the Indigenous Monitors continues at such sites.



Appropriate signage and buffers confirmed.

Indigenous Monitor Request Dashboard

Indigenous Monitors are provided with daily on-site field support from Environmental Inspectors and office support from Indigenous Monitor Coordinators. Indigenous Monitors can also make specific support requests or submit questions through their daily report. Examples include but are not limited to requests for Project reports, input from an environmental resource specialist or on-site support from an Elder or other cultural knowledge holder. Monthly requests and their completion status are noted below.

Status	Rolling Total and Type of Requests				
	Project Reports/Documents	Environmental Resource Specialists	Elder/Cultural Knowledge Holder	Other	Total
Total	6	1	8	0	15
Fulfilled	6	1	8	-	15
Outstanding	-	-	-	-	-

This report has been reviewed by the active Indigenous Monitor(s)

CONTACT US:

Trans Mountain

✉ info@transmountain.com

☎ 1.866.514.6700

🌐 transmountain.com



[@TransMtn](https://twitter.com/TransMtn)



youtube.com/transmtn



PO Box 81018

Burnaby, BC V5H 3B0



TRANSMOUNTAIN