

INDIGENOUS MONITOR OVERVIEW REPORT

Month: February 2023

Indigenous Monitor days on-site: 22

**Project Region: BC Interior
Spread 5A**

**Kilometre Posts (KPs) monitored:
KP 806–974**

Indigenous Monitors on the Trans Mountain Expansion Project – Overview

The Trans Mountain Expansion Project (the Project or TMEP) has retained Indigenous Monitors as integrated members of its construction Environmental Inspection team. Indigenous Monitors work with Environmental Inspectors to monitor compliance with mitigation measures to minimize impacts to traditional resource use and cultural/heritage sites during construction. Indigenous Monitors have a strategic role in providing traditional knowledge directly and pragmatically to construction oversight practices and bring an Indigenous lens to daily environmental inspection activities.

This Overview Report provides highlights of the Indigenous Monitors' day-to-day work and key mitigation measures observed by the Monitors related to Project construction in the BC Interior Region. The purpose of this report is to provide an update on Indigenous Monitor activity to Indigenous groups.

During this reporting period, key activities in the BC Interior Region involving Indigenous Monitors took place from KP 806 to 974 in Spread 5A and included monitoring environmental features, pipe installation, watercourse crossings and monitoring snake habitats. The Project Construction Progress Report (Condition 106) for February 2023, which reports environmental events and deficiencies in Tables 4 and 5 respectively, is found [here](#).

The Project has a process for sharing information related to potential Traditional Land Use (TLU) and Heritage Resource chance finds during construction. The [Protecting TLU and Cultural Heritage Resources Fact Sheet \(link here\)](#) provides an overview of the chance find communication process. Applicable Indigenous groups are notified and engaged directly on potential chance finds.

For more information: email info@transmountain.com or call 1.866.514.6700.

Environmental Features

Environmental features that occur on or adjacent to the construction footprint are staked and flagged by Resource Specialist crews, prior to commencing construction. This may include rare plants and rare ecological communities, wildlife species of concern, archaeological features, TLU sites and any other sensitive environmental or cultural features. The features are clearly marked so they may be avoided and/or protected during construction.

The Indigenous Monitors conducted inspections in areas of known environmental features to ensure flagging and staking of buffer zones are the correct distances. During the inspection, Indigenous Monitors identified a section of fencing that required maintenance and a damaged sign. Both corrective actions were brought to the attention of the environmental inspection team, which led to the items being repaired immediately. No further concerns were identified at this location.



Buffers and signage maintained at an environmental feature near KP 953.



Buffers and signage maintained at an environmental feature near AK 17 at the Coldwater re-route.

Pipe Installation

Topsoil stripping, pipe installation and backfill activities continue on Spread 5A. When removing soil in construction areas, required mitigation includes segregation of topsoil from root zone material, proper storage to reduce potential erosion, effective labelling and signage, and inspection of soil piles to ensure they are within the survey limits of the right-of-way and no soil has gone outside these limits.

The Indigenous Monitors noted mitigations for the topsoil piles to reduce erosion potential including grading and identifying drainage pathways to reduce ponding. The Indigenous Monitors observed sand and subsoil being backfilled over the pipe prior to topsoil being replaced and ensured backfill activities were confined to the construction right-of-way. Construction activities were noted as confined to the construction right-of-way. No issues or potential chance finds were identified.



Pipe installation and trench backfill activities at KP 947.



Pipe installation and trench backfill at KP 954.

Coldwater River Watercourse Crossing

Isolated trenched pipeline crossing methodology includes temporarily rerouting the stream around the natural watercourse for a short duration while trenched construction occurs across the watercourse. Once the trench is constructed and the pipe is installed, the trench is backfilled and channel bed and banks are restored, and the water is returned to its natural channel.

At Coldwater River near KP 953, Indigenous Monitors observed watercourse crossing construction activities, including grading and workspace preparation along the banks, installation of bypass pumps and erosion and sediment control (ESC) measures.

Mitigations noted during monitoring included spill kits available on-site, spill trays used for fuel storage on-site, excavated material placed above the high-water mark and top of bank of nearby water bodies to ensure sediment re-entry to the watercourse is prevented, and ongoing water quality monitoring by qualified professionals. No concerns were identified.



Backfilled trench following pipe placement at KP 953.

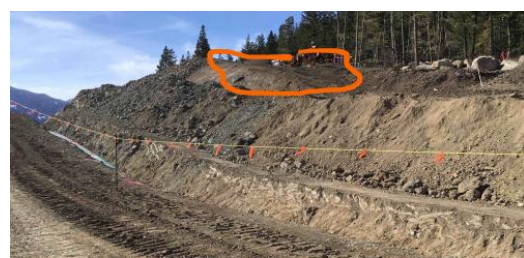


Looking downstream after crossing completed at KP 953.

Snake Habitats

The Western Rattlesnake and Great Basin Gophersnake Mitigation Plan focuses on the commitment to avoid and mitigate Project effects on the Western Rattlesnake and Great Basin Gophersnake and their habitats through application of mitigation and restoration measures.

Indigenous Monitors assisted Environmental Inspectors and Resource Specialists at AK 16 with pre-construction activities for reptile den reconstruction sites. Topsoil and materials such as rocks and woody debris were salvaged from disturbed snake den sites and will be used to reconstruct the snake habitat during the reclamation phase. Indigenous Monitors conducted inspections focusing on signage, fencing and pre-construction requirements. No concerns were identified.



Reptile den reconstruction site near AK 16.



Reptile den reconstruction site near AK 16.

Indigenous Monitor Request Dashboard

Indigenous Monitors are provided with daily on-site field support from Environmental Inspectors and office support from Indigenous Monitor Coordinators. Indigenous Monitors can also make specific support requests or submit questions through their daily report. Examples include but are not limited to requests for Project reports, input from an environmental resource specialist or on-site support from an Elder or other cultural knowledge holder. Monthly requests and their completion status are noted below.

Status	Rolling Total and Type of Requests				
	Project Reports/Documents	Environmental Resource Specialists	Elder/Cultural Knowledge Holder	Other	Total
Total	6	1	8	0	15
Fulfilled	6	1	8	-	15
Outstanding	-	-	-	-	-

This report has been reviewed by the active Indigenous Monitor(s)

CONTACT US:

Trans Mountain

 info@transmountain.com

 1.866.514.6700

 transmountain.com



@TransMtn



[youtube.com/transmtn](https://www.youtube.com/transmtn)



PO Box 81018

Burnaby, BC V5H 3B0



TRANSMOUNTAIN