

INDIGENOUS MONITOR OVERVIEW REPORT

Month: February 2022

Indigenous Monitor days on-site: 24

**Project Region: Coquihalla Hope
Spread 5B**

**Kilometre Posts (KPs) monitored:
KP 990–1075**

Indigenous Monitors on the Trans Mountain Expansion Project – Overview

The Trans Mountain Expansion Project (the Project or TMEP) has retained Indigenous Monitors as integrated members of its construction Environmental Inspection team. Indigenous Monitors work with Environmental Inspectors to monitor compliance with mitigation measures to minimize impacts to traditional resource use and cultural/heritage sites during construction. Indigenous Monitors have a strategic role in providing traditional knowledge directly and pragmatically to construction oversight practices and bring an Indigenous lens to daily environmental inspection activities.

This Overview Report provides highlights of the Indigenous Monitors' day-to-day work and key mitigation measures observed by the Monitors related to Project construction in the Coquihalla Hope Region. The purpose of this report is to provide an update on Indigenous Monitor activity to Indigenous groups.

During this reporting period, key activities in the Coquihalla Hope Region involving Indigenous Monitors took place from KP 990 to 1075 in Spread 5B and included monitoring right-of-way clearing, trenchless crossing activities, temporary construction sites, topsoil removal, conducting culturally modified tree sweeps and de-watering activities. The Project Construction Progress Report (Condition 106) for February 2022, which reports environmental events and deficiencies in Tables 4 and 5 respectively, is found [here](#).

The Project has a process for sharing information related to potential Traditional Land Use (TLU) and Heritage Resource chance finds during construction. The [Protecting TLU and Cultural Heritage Resources Fact Sheet \(link here\)](#) provides an overview of the chance find communication process. Applicable Indigenous groups are notified and engaged directly on potential chance finds.

For more information: email info@transmountain.com or call 1.866.514.6700.

Trans Mountain COVID-19 – Our Response

Trans Mountain is actively monitoring the COVID-19 situation with the help of federal, provincial and local agencies. Trans Mountain's top priority remains the health and safety of its workforce, their families and our communities.

For more information: transmountain.com/covid19

Right-of-Way Clearing

Project right-of-way clearing involves the removal of trees and vegetation in areas along the pipeline. During this process, the surveyed Project right-of-way is cleared by removing the trees and brush. During the winter months, snow removal activities are required.

The Indigenous Monitors inspected clearing activities along the right-of-way at KP 1049 near Chawathen Creek. The inspection included documenting housekeeping, erosion and sediment control measures, buffers and signage for environmentally sensitive areas. No rare or medicinal plants were identified by the Indigenous Monitors in the workspace. No concerns were identified during the inspection.



Clearing activities commenced at KP 1049.

Trenchless Crossings

Near Laidlaw Road, crews were constructing a bore pad for trenchless crossing activities. Trenchless crossings are used to safely cross underneath roads and railways, minimizing the impact on users. These techniques are also used to avoid or minimize impact for many watercourses and environmentally sensitive areas.

At KP 1057, boring activities under the Laidlaw Road were completed. Ground disturbance was observed within the designated limits. The ground near parked machinery was inspected for surface staining. No concerns were identified. Drip trays accumulated water from snow melt. The deficiency was addressed and the fluids were properly disposed of from trays. Good housekeeping and proper waste management procedures were documented during the inspection.

The Indigenous Monitor participated in inspections focused on appropriate signage and flagging. Disturbed soil was inspected for potential chance finds. No potential heritage resource chance finds were identified throughout the inspection.



Trench box installation north of Laidlaw Rd.



Boring drill lowered into trench.



Prepping area for trenchless crossing at Jones Creek KP 1058.

Temporary Construction Lands

Temporary construction lands and infrastructure are defined for the Project as preparatory work areas to support Project construction and include temporary camps, stockpile sites, equipment staging areas and borrow pits, as well as works on access roads within the first 10 km of each designated construction spread. Many of the sites addressed in the Temporary Construction Lands and Infrastructure Environmental Protection Plan are on previously developed lands.

Indigenous Monitors participated in joint inspections with the Environmental Inspector at the Hope laydown yard. Key aspects of the inspections included housekeeping and waste management, with corrective actions noted, including proper waste disposal and using drip trays. In addition, spill kits and spill response procedures were reviewed and implemented at site with no concerns identified.



Garbage identified. Corrective action applied during inspection.

Topsoil Removal

When removing topsoil in construction areas, required mitigation includes segregation of topsoil from root zone material, proper storage to reduce potential erosion, effective labelling and signage, and inspection of topsoil piles to ensure they are within the survey limits of the right-of-way and no soil has gone outside these limits. Wildlife has been shown to be using soil breaks to allow for travel across the right-of-way.

The Indigenous Monitors were involved in monitoring and inspecting such topsoil salvage mitigations near KP 1058. The Indigenous Monitors also inspected the construction areas before and after topsoil stripping to identify any potential archaeological chance finds. No potential archaeological chance finds were identified.



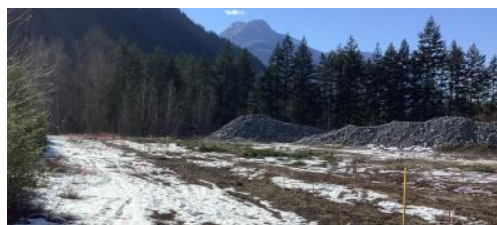
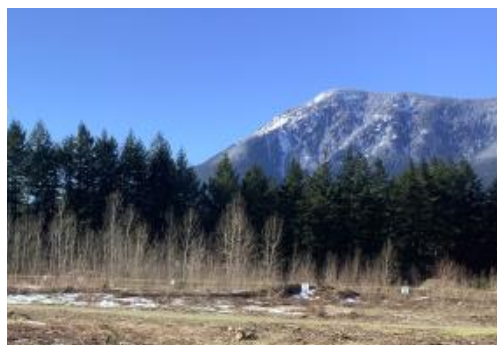
Topsoil removal at KP 1058.

Culturally Modified Trees (CMT)

Resource-Specific Mitigation Tables and Environmental Alignment Sheets are used to illustrate locations of and summarize specified mitigation for previously identified historical resources and TLU areas. Such locations have been identified via TLU studies conducted by Indigenous groups and archaeology baseline assessments that have been conducted in relation to the Project for more than seven years.

If a site or location is observed in the field that may be a previously unidentified TLU area, the TLU Site Discovery Contingency Plan is followed.

The Indigenous Monitor participated in the implementation of the TLU Site Discovery Contingency Plan in areas where trees thought to be potentially culturally modified were identified. Indigenous Monitors continue conducting CMT sweeps ahead of construction activity.



General area of CMT sweeps.

De-watering Management

Near KP 1057, during construction activity, water that accumulates within the Project area from precipitation or groundwater seepage is visually assessed prior to being pumped to areas approved by the Trans Mountain Environmental Inspector. This water is discharged through a filtration device and into well vegetated areas away from the Project footprint. From there, it will slowly infiltrate into local soil.

The Indigenous Monitors inspected the pump-off of water south of Laidlaw Road. Water management mitigation measures were documented as compliant per the Environmental Protection Plan.



Energy dissipation bags used south of Laidlaw Road at a designated pump-off location.

Indigenous Monitor Request Dashboard

Indigenous Monitors are provided with daily on-site field support from Environmental Inspectors and office support from Indigenous Monitor Coordinators. Indigenous Monitors can also make specific support requests or submit questions through their daily report. Examples include but are not limited to requests for Project reports, input from an environmental resource specialist or on-site support from an Elder or other cultural knowledge holder. Monthly requests and their completion status are noted below.

Status	Rolling Total and Type of Requests				
	Project Reports/Documents	Environmental Resource Specialists	Elder/Cultural Knowledge Holder	Other	Total
Total	8	0	4	0	12
Fulfilled	8	-	4	-	12
Outstanding	-	-	-	-	-

This report has been reviewed by the active Indigenous Monitor(s)

CONTACT US: Trans Mountain

✉ info@transmountain.com
☎ 1.866.514.6700
🌐 transmountain.com

🐦 [@TransMtn](https://twitter.com/TransMtn)

📺 youtube.com/transmtn

🌐 [in](https://www.linkedin.com/company/transmountain)

📍 PO Box 81018
Burnaby, BC V5H 3B0

