

INDIGENOUS MONITOR OVERVIEW REPORT

Month: April 2022

**Project Region: Edmonton and
Yellowhead**

Indigenous Monitor days on-site: 27

**Kilometre Posts (KPs) monitored:
KP 1–377**

Indigenous Monitors on the Trans Mountain Expansion Project – Overview

The Trans Mountain Expansion Project (the Project or TMEP) is retaining Indigenous Monitors as integrated members of its construction Environmental Inspection team. Indigenous Monitors work with Environmental Inspectors to monitor compliance with mitigation measures to minimize impacts to traditional resource use and cultural/heritage sites during construction. Indigenous Monitors have a strategic role in providing traditional knowledge directly and pragmatically to construction oversight practices and bring an Indigenous lens to daily environmental inspection activities.

This Overview Report provides highlights of the Indigenous Monitors' day-to-day work and key mitigation measures observed by the Monitors related to Project construction in the Edmonton and Yellowhead Regions. The purpose of this report is to provide an update on Indigenous Monitor activity to Indigenous groups.

During this reporting period, key activities in the Edmonton and Yellowhead Regions involving Indigenous Monitors included monitoring soil salvage, Edmonton Terminal inspections, Traditional Land Use (TLU) sites, erosion and sediment control measures, and watercourse crossings. Pipeline construction on Spread 1 is mechanically complete; some final Project activities on the Spread 1 right-of-way are anticipated to resume in mid-spring 2022. The Project Construction Progress Report (Condition 106) for April 2022, which reports environmental events and deficiencies in Tables 4 and 5 respectively, is found [here](#).

The Project has a process for sharing information related to potential TLU and Heritage Resource chance finds during construction. The [Protecting TLU and Cultural Heritage Resources Fact Sheet \(link here\)](#) provides an overview of the chance find communication process. Applicable Indigenous groups are notified and engaged directly on potential chance finds.

For more information: email info@transmountain.com or call 1.866.514.6700.

Trans Mountain COVID-19 – Our Response

Trans Mountain is actively monitoring the COVID-19 situation with the help of federal, provincial and local agencies. Trans Mountain's top priority remains the health and safety of its workforce, their families and our communities.

For more information: transmountain.com/covid19

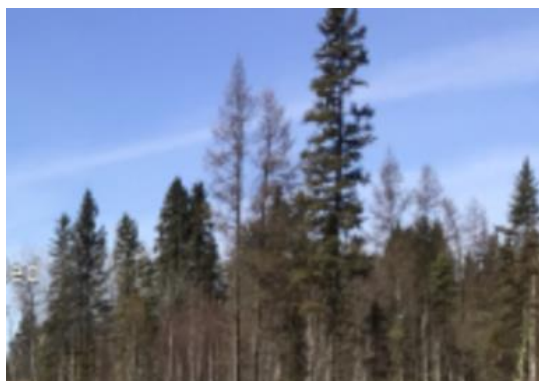
Wildlife Management

While conducting site monitoring, Indigenous Monitors record and report wildlife sightings to the Environmental Inspector. They also participate in discussions with the Environmental Inspection team relating to wildlife protection strategies and inspect that mitigation measures like environmental feature signage and buffers are effectively in place.

In April, the Indigenous Monitors participated in wildlife sweeps including amphibian and migratory nesting bird sweeps alongside the Resource Specialist prior to clearing and/or other construction activity. Nesting birds that require protection include species of migratory birds and those listed federally and/or provincially. Active nests require mitigation (e.g. avoidance or monitoring).

Indigenous Monitors and Environmental Inspectors attended Bird Sweep Training in April. The training covered bird recognition, behaviour, influences and impacts of construction, nest location and identification, and best times and weather conditions to perform bird sweeps, as well as chance find procedures and mitigations.

Resource Specialists performed sweeps in all areas where active construction is or will soon be underway. Indigenous Monitors joined for bird sweeps near KP 48, 128, 179 and 256.



Bird sweep KP 128.



Bird sweep KP 179.

Edmonton Terminal Inspection

A joint inspection was conducted by the Environmental Inspector and Indigenous Monitor at Edmonton Terminal. Waste management was inspected as well as secondary containment for equipment and fuel storage tanks. Spill kits and spill response procedures were reviewed with no concerns identified.

An Indigenous Monitor inspected and observed construction activities around the new storage tank, containment walls and the tie-in manifold that were under construction in previous months had since been tied in and backfilled. The containment wall construction continues with installation going as planned. The tank structure is complete with final work being completed before commissioning. Deficiencies observed would be reported to the Environmental Inspector who submits the corrective actions to the General Construction Contractor. No deficiencies were found at the time of inspection.



New tank construction Edmonton Terminal.



Containment wall nearing completion at Edmonton Terminal.



Hydrocarbon containment pond complete at Edmonton Terminal.

Traditional Land Use Sites

Resource-Specific Mitigation Tables and Environmental Alignment Sheets are used to illustrate locations of and summarize specified mitigation for previously identified historical resources and TLU areas. Such locations have been identified via TLU studies conducted by Indigenous groups and archaeology baseline assessments that have been conducted in relation to the Project over many years.

Indigenous Monitors inspected previously identified TLU sites along the right-of-way on Spread 2, including but not limited to TLU-2 and TLU-9. Mitigation measures in place included signage, staking and flagging.

Indigenous Monitors inspect TLU sites with a focus on sites near active construction to ensure mitigation measures are in place to protect Heritage Resources. In April, an Indigenous Monitor performed a focus inspection on a Plant Gathering Site. The inspection considers mitigations listed in the Resource Specific Mitigation Table. The Indigenous Monitor confirmed there have been no chemicals sprayed in the TLU site, that boundary signage is in place and the Condition 100 Heritage Resource and Sacred and Cultural Sites Plan is followed.



Signage in place at TLU-2 KP 86.



Mitigations in place at TLU 9.

Erosion and Sediment Control

Site-specific erosion and sediment control (ESC) measures are implemented to prevent sediment-laden runoff from leaving the right-of-way or from entering watercourses and wetlands. Key areas where ESC measures are required can include soil excavations, exposed slopes, soil stockpiles and locations near watercourses.

On-site ESC mitigations may include sediment fences, swales, wattles, rock armouring, erosion control blankets and hydroseeding, as well as water drainage control measures.

Indigenous Monitors inspected ESC mitigations, including wing walls and silt fencing through several wetlands. One inspection at KP 86 revealed a damaged wing wall in a wetland complex. The Indigenous Monitor contacted the EI in the area and the contractor dealt with the deficiency by reinstalling the silt fencing. Water crossing restoration is heavily focused on ESC measures. Indigenous Monitors inspected erosion control blankets secured with willow stakes, rock armouring, swales and placement of coarse woody debris in and around the several watercourse crossings completed in recent months. Monitoring of these locations will continue with special attention during and after rain events.



Wing wall in need of repair at WT-262 KP 86.



ESC measures in place for access to AB-44 KP 107.



Erosion control blanket installed per manufacturers specs AB-46a KP 110.

Watercourse Crossings In-Stream Work

Environmental mitigation measures for in-stream construction of watercourses are prescribed in the provincial permits and the watercourse crossing plans, and in some cases, a Fisheries and Oceans Canada (DFO) authorization. Mitigation measures required for in-stream construction include but are not limited to biosecurity cleaning of equipment, secondary containment of hydrocarbons, salvaging of stream bed material, fish salvage, water quality monitoring and sediment/erosion control.

In addition to regular watercourse monitoring, an Indigenous Monitor took part in a DFO inspection in April. The group inspected restored DFO sites on Spread 2 and engaged in conversations about each crossing with DFO representatives and representatives from their Nation. No deficiencies were identified during the inspection. Indigenous Monitors were invited to review and contribute to Alberta Isolated Trenched Crossings Monthly Report prior to submission to the DFO. The final report was reviewed and submitted in April.

DFO Progress

In April, Indigenous Monitors continued to inspect mitigation measures in place at the previously restored DFO water crossings. All open-cut DFO crossings are now complete on Spread 2. No deficiencies were identified.



Hard wrap and rock armour used for stream bank restoration at AB-144 KP 17.



Reclamation complete at Rooster Creek AB-153 KP 290.



Bank restoration with ESC measures in place at AB-153 Rooster Creek KP 290.

Indigenous Monitor Request Dashboard

Indigenous Monitors are provided with daily on-site field support from Environmental Inspectors and office support from Indigenous Monitor Coordinators. Indigenous Monitors can also make specific support requests or submit questions through their daily report. Examples include but are not limited to requests for Project reports, input from an environmental resource specialist or on-site support from an Elder or other cultural knowledge holder. Requests and their completion status are noted below.

Status	Rolling Total and Type of Requests				
	Project Reports/Documents	Environmental Resource Specialists	Elder/Cultural Knowledge Holder	Other	Total
Total	6	1	5	-	12
Fulfilled	6	1	5	-	12
Outstanding	-	-	-	-	-

This report has been reviewed by the active Indigenous Monitor(s)

CONTACT US:

Trans Mountain

 info@transmountain.com

 1.866.514.6700

 transmountain.com

  @TransMtn

 youtube.com/transmtn



 PO Box 81018
Burnaby, BC V5H 3B0

