

## INDIGENOUS MONITOR OVERVIEW REPORT

**Month: March 2022**

**Project Region: Edmonton and  
Yellowhead**

**Indigenous Monitor days on-site: 27**

**Kilometre Posts (KPs) monitored:  
KP 1–377**

### **Indigenous Monitors on the Trans Mountain Expansion Project – Overview**

The Trans Mountain Expansion Project (the Project or TMEP) is retaining Indigenous Monitors as integrated members of its construction Environmental Inspection team. Indigenous Monitors work with Environmental Inspectors to monitor compliance with mitigation measures to minimize impacts to traditional resource use and cultural/heritage sites during construction. Indigenous Monitors have a strategic role in providing traditional knowledge directly and pragmatically to construction oversight practices and bring an Indigenous lens to daily environmental inspection activities.

This Overview Report provides highlights of the Indigenous Monitors' day-to-day work and key mitigation measures observed by the Monitors related to Project construction in the Edmonton and Yellowhead Regions. The purpose of this report is to provide an update on Indigenous Monitor activity to Indigenous groups.

During this reporting period, key activities in the Edmonton and Yellowhead Regions involving Indigenous Monitors included monitoring soil salvage, Edmonton Terminal inspections, Traditional Land Use (TLU) sites, erosion and sediment control measures, and watercourse crossings. Pipeline construction on Spread 1 is mechanically complete; some final Project activities on the Spread 1 right-of-way are anticipated to resume in mid-spring 2022. The Project Construction Progress Report (Condition 106) for March 2022, which reports environmental events and deficiencies in Tables 4 and 5 respectively, is found [here](#).

The Project has a process for sharing information related to potential TLU and Heritage Resource chance finds during construction. The [Protecting TLU and Cultural Heritage Resources Fact Sheet \(link here\)](#) provides an overview of the chance find communication process. Applicable Indigenous groups are notified and engaged directly on potential chance finds.

**For more information: email [info@transmountain.com](mailto:info@transmountain.com) or call 1.866.514.6700.**

### **Trans Mountain COVID-19 – Our Response**

Trans Mountain is actively monitoring the COVID-19 situation with the help of federal, provincial and local agencies. Trans Mountain's top priority remains the health and safety of its workforce, their families and our communities.

**For more information: [transmountain.com/covid19](https://transmountain.com/covid19)**

## Soil Salvage

During construction activities on Spread 2, Indigenous Monitors were on-site performing monitoring and inspection duties related to soils, including ensuring equipment arrives clean on-site, soil piles are placed within the survey limits of the right-of-way, stockpile labelling and that topsoil and transition piles are adequately separated.

At KP 71-72, Indigenous Monitors inspected topsoil/subsoil salvage and stockpile placement. During the inspection, the Indigenous Monitor confirmed the topsoil was removed to the depth specified on the Environmental Alignment Sheet, soil piles were within the surveyed limits, labelled and top and subsoil were separated with room for wildlife to move through the area. No concerns were identified.

At KP 290, an Indigenous Monitor confirmed mitigation measures were in place around a topsoil pile containing a rare plant seed bed, including signage and sediment fence.

No deficiencies were found at the time of inspection.



Topsoil stripping at KP 71.



Soil piles inside ROW boundary at KP 72.



Seed bank topsoil staked and labelled, and sediment fence intact at KP 290.

## Edmonton Terminal Inspection

A joint inspection was conducted by the Environmental Inspector and Indigenous Monitor at the Edmonton Terminal. Waste management was inspected as well as secondary containment for equipment and fuel storage tanks. Spill kits and spill response procedures were reviewed with no concerns identified.

An Indigenous Monitor inspected and observed construction activities around the new storage tank, containment walls and the tie-in manifold. The containment wall construction continues, with installation going as planned. Deficiencies observed would be reported to the Environmental Inspector who submits the corrective actions to the General Construction Contractor.

No deficiencies were found at the time of inspection.



New tank construction Edmonton Terminal.



Spill containment at hose joint during hydro test at Edmonton Terminal.

## Traditional Land Use Sites

Resource-Specific Mitigation Tables and Environmental Alignment Sheets are used to illustrate locations of and summarize specified mitigation for previously identified historical resources and TLU areas. Such locations have been identified via TLU studies conducted by Indigenous groups and archaeology baseline assessments that have been conducted in relation to the Project for more than seven years.

Indigenous Monitors inspected previously identified TLU sites along the right-of-way on Spread 2, including but not limited to TLU-2, TLU-6, TLU-7, TLU-8, TLU-9, TLU-19, TLU-20, TLU-22 and TLU-23. Mitigation measures in place included signage, staking and flagging.

Indigenous Monitors inspect TLU sites ongoing, with a focus on sites near active construction to ensure mitigation measures are in place to protect Heritage Resources. No concerns or deficiencies were identified in March.



Strip and grade of subsoil TLU-2 KP 86.



Proper signage in place at TLU-19-20 KP 192.

## Erosion and Sediment Control

Site-specific erosion and sediment control (ESC) measures are implemented to prevent sediment-laden runoff from leaving the right-of-way or from entering watercourses and wetlands. Key areas where ESC measures are required can include soil excavations, exposed slopes, soil stockpiles and locations near watercourses.

On-site ESC mitigations may include sediment fences, swales, wattles, rock armouring, erosion control blankets and hydroseeding, as well as water drainage control measures.

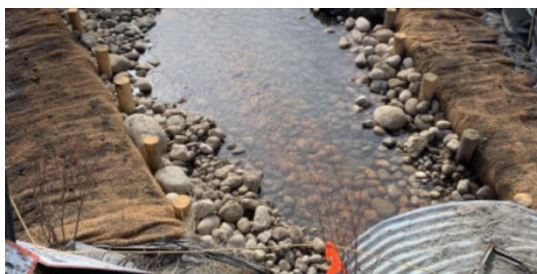
Indigenous Monitors inspected ESC mitigations, including wing walls and silt fencing through several wetlands. Water crossing restoration is heavily focused on ESC measures. Indigenous Monitors inspected erosion control blankets secured with willow stakes, rock armouring, swales and placement of coarse woody debris in and around the several watercourse crossings completed in March. Monitoring of these locations will continue with special attention during and after rain events.



Wing walls keyed in at AB-19 KP 63.



ESC measures in place for access to WT 260A KP 85.



ESC measures in place AB-140 KP 256.



ESC measures in place AB-178 KP 317.

## Watercourse Crossings In-Stream Work

Environmental mitigation measures for in-stream construction of watercourses are prescribed in the provincial permits and the watercourse crossing plans, and in some cases, a Fisheries and Oceans Canada (DFO) authorization. Mitigation measures required for in-stream construction include but are not limited to biosecurity cleaning of equipment, secondary containment of hydrocarbons, salvaging of stream bed material, fish salvage, water quality monitoring and sediment/erosion control.

In addition to regular watercourse monitoring, Indigenous Monitors took part in a DFO inspection. The group inspected all active DFO sites on Spread 2. Each site was at a different phase in construction, highlighting the importance of the above-listed mitigation measures through the various phases of construction. The Indigenous Monitors present engaged in conversations about each crossing with DFO representatives and representatives from their Nation. No deficiencies were identified during the inspection. Indigenous Monitors are invited to review and contribute to Alberta Isolated Trenched Crossings Monthly Report prior to submission to the DFO.

## DFO Progress

In March, Indigenous Monitors continued to inspect mitigation measures in place during construction at AB-153 Rooster Creek, AB-153a unnamed creek, and AB-202 unnamed creek. All these crossings were completed during March. Final DFO inspection is scheduled for late-April.



Hard wrap and rock armour used for stream bank restoration at AB-144 KP 17



Flume in place over sheet piles at Rooster Creek AB-153 KP 290.



Reclamation complete at AB-153 Rooster Creek KP 290.

## Indigenous Monitor Request Dashboard

Indigenous Monitors are provided with daily on-site field support from Environmental Inspectors and office support from Indigenous Monitor Coordinators. Indigenous Monitors can also make specific support requests or submit questions through their daily report. Examples include but are not limited to requests for Project reports, input from an environmental resource specialist or on-site support from an Elder or other cultural knowledge holder. Requests and their completion status are noted below.

Status	Rolling Total and Type of Requests				
	Project Reports/Documents	Environmental Resource Specialists	Elder/Cultural Knowledge Holder	Other	Total
Total	6	1	5	-	12
Fulfilled	6	1	5	-	12
Outstanding	-	-	-	-	-

This report has been reviewed by the active Indigenous Monitor(s)

### CONTACT US:

Trans Mountain

 [info@transmountain.com](mailto:info@transmountain.com)

 1.866.514.6700

 [transmountain.com](http://transmountain.com)

  @TransMtn

 [youtube.com/transmtn](https://youtube.com/transmtn)



 PO Box 81018  
Burnaby, BC V5H 3B0

