

INDIGENOUS MONITOR OVERVIEW REPORT

Month: April 2022

Indigenous Monitor days on-site: 24

Project Region: Fraser Valley

**Kilometre Posts (KPs) monitored:
KP 1075–1165**

Indigenous Monitors on the Trans Mountain Expansion Project – Overview

The Trans Mountain Expansion Project (the Project or TMEP) is retaining Indigenous Monitors as integrated members of its construction Environmental Inspection team. Indigenous Monitors work with Environmental Inspectors to monitor compliance with mitigation measures to minimize impacts to traditional resource use and cultural/heritage impacts during construction. Indigenous Monitors have a strategic role in providing traditional knowledge directly and pragmatically to construction oversight practices and bring an Indigenous lens to daily environmental inspection activities.

This Overview Report provides highlights of the Indigenous Monitors' day-to-day work and key mitigation measures observed by the Monitors related to Project construction in the Fraser Valley. The purpose of this report is to provide an update on Indigenous Monitor activity to Indigenous groups.

During this reporting period, key Project activities in the Fraser Valley Region involving Indigenous Monitors included construction on Spread 6/7A. Activities included monitoring at heritage resource sites, right-of-way clearing and timber salvage, topsoil stripping, erosion and sediment control, site housekeeping and wildlife management.

The Project Construction Progress Report (Condition 106) for April 2022, which reports environmental events and deficiencies in Tables 4 and 5 respectively, is found [here](#).

The Project has a process for sharing information related to potential Traditional Land Use (TLU) and Heritage Resource chance finds during construction. [Protecting TLU and Cultural Heritage Resources Fact Sheet \(link here\)](#) provides an overview of the chance find communication process. Applicable Indigenous groups are notified and engaged directly on potential chance finds.

For more information: email info@transmountain.com or call 1.866.514.6700.

Trans Mountain COVID-19 – Our Response

Trans Mountain is actively monitoring the COVID-19 situation with the help of federal, provincial and local agencies. Trans Mountain's top priority remains the health and safety of its workforce, their families and our communities.

For more information: transmountain.com/covid19

Heritage Resource Sites

Resource-Specific Mitigation Tables and Environmental Alignment Sheets are used to identify locations of and summarize specified mitigation for previously identified historical resources and TLU areas. Such locations have been identified via TLU studies conducted by Indigenous groups and archaeology baseline assessments conducted over many years of Project planning.

In April, the Indigenous Monitors observed Archaeological Impact Assessments (AIAs) conducted along the right-of-way near KP 1121 and KP 1131. The assessments, completed by a qualified archaeologist and Indigenous participants included visual inspections to identify features with archaeological potential, surface inspection of areas with exposed sediments for cultural or terrain features exhibiting archaeological potential and sub-surface testing (shovel testing) of terrain features exhibiting archaeological potential.

If an archaeological site is found, Trans Mountain completes the applicable reporting and applies for the required permits in alignment with the Heritage Conservation Act. Ongoing AIA activities continue in the Fraser Valley.



Test hole conducted at KP 1121.600 during AIA activity.

Right-of-Way Clearing and Timber Salvage

Project right-of-way clearing involves the removal of trees and vegetation in areas along the Project footprint. During this process, the right-of-way is cleared by removing trees and brush. The topsoil is salvaged and stored along the edge of the right-of-way so it may be spread back out during reclamation. Prior to clearing activities, site-specific pre-clearing walk-throughs and meetings are conducted that will identify existing and potential environmental issues and/or constraints. The pre-clearing walk-throughs are done a day or two before any activities.

In April, the Indigenous Monitors participated in pre-clearing walk-throughs at KP 1076, KP 1078, KP 1118, KP 1145 and KP 1162 with the Environmental Inspector and contractor to ensure appropriate staking, flagging and signage of environmental features were in place prior to tree falling activities. The inspections included documenting topsoil storage, good housekeeping measures, fencing installation and accurate buffers and signage for environmentally sensitive areas. During the walk-through at KP 1078, the Indigenous Monitor participated in a discussion to retain several cedars trees in the area. The need for staking and signage of barn owl habitat was also discussed.



Pre-clearing walk-through with the Indigenous Monitor, Environmental Inspector and contractor near 1078.250.



Trees cleared and timber being stored near KP 1162.550.

Topsoil Stripping

When stripping soil in construction areas, required mitigation includes segregation of topsoil from rootzone material, proper storage and covering to reduce potential erosion, effective labelling and signage and inspection of topsoil stockpiles to ensure they are within the survey limits of the right-of-way and no soil has gone outside these limits.

Indigenous Monitors inspected that topsoil stockpiles are separated and placed within the limits of the right-of-way and that stockpiles are adequately labelled. Stripped areas are also monitored for potential chance finds that could be unearthed.

The Indigenous Monitors were involved in monitoring such topsoil stripping mitigations near KP 1093 and KP 1162. The Indigenous Monitors also inspected the construction areas before and after topsoil was stripped to identify any potential archaeological chance finds. No deficiencies or potential chance finds were identified during the inspections.



Sod and topsoil removed at KP 1093.700.



Topsoil stripping near KP 1162.550.

Erosion and Sediment Control

Site-specific erosion and sediment control (ESC) measures are monitored and inspected to ensure they are functioning as intended to mitigate erosion and sediment transport from construction sites to sensitive environmental features downstream. On-site ESC mitigations include sediment fences, swales, wattles, straw, polyethylene sheeting, coco matting, geotextile fabric and hydroseeding, as well as water drainage control measures.

Indigenous Monitors alongside Environmental Inspectors observed and inspected numerous ESC measures on TMEP construction sites throughout Spreads 6 and 7A. Inspections were completed in areas including but not limited to KP 1078, KP 1112, KP 1117, KP1118, KP 1151, KP 1158 and KP 1163. All observed ESC measures were in compliance during inspection.



Silt fencing used as an ESC measure installed effectively near KP 1162.550.

Site Housekeeping

Indigenous Monitors conduct regular site inspections for general housekeeping measures. This includes observing and documenting garbage and recycling disposal, scrap metal management, waste storage and secondary containment of fuel and other hydrocarbons. Secondary containment measures include but are not limited to drip trays under inactive vehicles and equipment, and drip trays placed under hydrocarbon containers.

Indigenous Monitors conducted housekeeping inspections at KP 1078, KP 1160 and KP 1162. At Sumas Terminal, spot spills of diesel were observed. The contractor cleaned up the spills with spill pads and all used spill pads were placed in the appropriate receptable for disposal.



Secondary containment placed effectively near KP 1162.500.



Waste receptacles at Sumas Terminal inspected.

Wildlife Management

While conducting site monitoring, the Indigenous Monitors record and report wildlife sightings to the Environmental Inspector. They also inspect signage and wildlife buffers to ensure they're effectively in place to prevent incidental contact. Indigenous Monitors are also routinely participating in wildlife sweeps for various species of wildlife

In the Fraser Valley, Indigenous Monitors participated in wildlife sweeps with the Resource Specialist. These included amphibian sweeps and salvage efforts near KP 1158 and Pacific Water Shrew sweeps and salvage efforts near KP 1116. No wildlife was discovered during inspection.

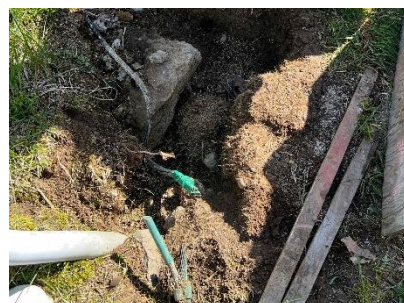
At Sumas Terminal the contractor discovered bedding material present within a hydrovac hole. The Contractor did not observe any voles, but voles are known to frequent the area. The material was reported to the Environmental Inspector. The Indigenous Monitor and Environmental Inspector investigated and observed the area. No voles were present, and the grasses and bedding material was removed to prevent attractant of small mammals to the area. The hydrovac hole was immediately backfilled as the presence of small mammals were confirmed not present. The grasses and bedding material were moved outside the terminal fence line. The Environmental Inspector confirmed that Voles present at the Sumas Terminal fall under the wildlife salvage permit and are not a listed species requiring further notification.



Signage at KP 1158.570 indicated an amphibian salvage was required.



Wildlife sweeps for Pacific Water Shrew conducted near KP 1116.499.



Hydrovac hole where vole nesting material was discovered at Sumas Terminal.




Indigenous Monitor Request Dashboard

Indigenous Monitors are provided daily on-site field support from Environmental Inspectors and office support from Indigenous Monitor Coordinators. Indigenous Monitors can also make specific support requests or submit questions through their daily report. Examples include but are not limited to requests for Project reports, input from an environmental resource specialist or on-site support from an Elder or other cultural knowledge holder. Requests and their completion status are noted below.

Status	Rolling Total and Type of Requests				
	Project Reports/ Documents	Environmental Resource Specialists	Elder/Cultural Knowledge Holder	Other	Total
Total	0	2	0	0	2
Fulfilled	-	2	-	-	2
Outstanding	-	0	-	-	0

This report has been reviewed by the active Indigenous Monitor(s)

CONTACT US:

Trans Mountain
 info@transmountain.com
 1.866.514.6700
 transmountain.com

 [@TransMtn](https://twitter.com/TransMtn)
 [@TransMtn](https://www.facebook.com/TransMtn)
 [youtube.com/transmtm](https://www.youtube.com/transmtm)
 [transmountain](https://www.linkedin.com/company/transmountain)

 PO Box 81018
 Burnaby, BC V5H 3B0

