

INDIGENOUS MONITOR OVERVIEW REPORT

Month: March 2023

**Project Region: Jasper to Mount
Robson Reactivation**

Indigenous Monitor days on-site: 21

**Kilometre Posts (KPs) monitored:
KP 317–461**

Indigenous Monitors on the Trans Mountain Expansion Project – Overview

The Trans Mountain Expansion Project (the Project or TMEP) is retaining Indigenous Monitors as integrated members of its construction Environmental Inspection team. Indigenous Monitors work with Environmental Inspectors to monitor compliance with mitigation measures to minimize impacts to traditional resource use and cultural/heritage sites during TMEP construction.

Operations and maintenance work, including integrity digs and sleeve replacements occurring along the deactivated pipeline segments in Jasper National Park and Mount Robson Provincial Park is not part of TMEP nor subject to TMEP Conditions. However, Trans Mountain will include Indigenous Monitors during certain operations and maintenance work in reactivation areas as it relates to preparing for future TMEP construction activities.

This Overview Report provides highlights of the Indigenous Monitors' day-to-day work and key mitigation measures observed by the Monitors related to construction in the Jasper to Mount Robson Reactivation Region. The purpose of this report is to provide an update on Indigenous Monitor activity to Indigenous groups.

During this reporting period, key activities in the Jasper to Mount Robson Reactivation Region involving Indigenous Monitors took place from KP 317–461 and included access management, wildlife management, pipe installation and backfill and site housekeeping. The Project Construction Progress Report (Condition 106) for March 2023, which reports environmental events and deficiencies in Tables 4 and 5 respectively, is found [here](#).

The Project has a process for sharing information related to potential Traditional Land Use (TLU) and Heritage Resource chance finds during construction. The [Protecting TLU and Cultural Heritage Resources Fact Sheet \(link here\)](#) provides an overview of the chance find communication process. Applicable Indigenous groups are notified and engaged directly on potential chance finds.

For more information: email info@transmountain.com or call 1.866.514.6700.

Access Management

TMEP's Environmental Protection Plan describes mitigations associated with environmental features such as soils, vegetation, fish and fish habitat, and wildlife and wildlife habitat. Existing access is used whenever possible to reduce impacts during construction.

Indigenous Monitors and an Environmental Inspector monitored access removal at the Jasper laydown yard. Geotech cloth and matting were used in the area to protect the topsoil and root mat. The Indigenous Monitors will continue to monitor construction progress as the soil and Geotech are removed and note that the proper mitigation measures are in place, such as erosion and sediment control (ESC) measures. No environmental concerns were identified during inspection of access removal.



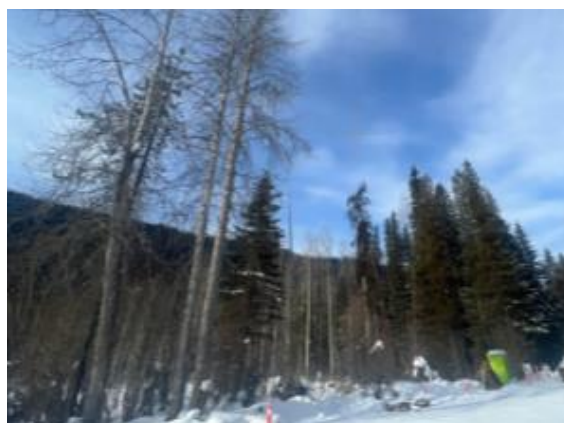
Jasper yard access road prep for removal KP 369.

Wildlife Management

While conducting site monitoring, the Indigenous Monitors record and report wildlife sightings to the Environmental Inspector. They also participate in discussions with the Environmental Inspection team relating to wildlife protection strategies and inspect that mitigation measures like environmental feature signage and buffers are effectively in place.

Indigenous Monitors participated in migratory bird sweeps prior to construction and reclamation activity. Nesting birds that require protection include species of migratory birds and those listed federally and/or provincially. Active nests require mitigation (e.g., avoidance or monitoring).

Bird sweeps are performed in all areas where active construction is or will soon be underway. Indigenous Monitors joined bird sweeps at the Jasper laydown yard between KP 369 and KP 433. Indigenous Monitors and Environmental Inspectors confirmed that proper buffers and signage were in place and continue to communicate daily about active bird nests. No issues were identified.



General area swept for nesting birds no activity KP 433.



General area swept for nesting birds and no activity at KP 433.

Pipe Installation and Backfill

Pipe installation and backfill activities were completed near KP 433. Once the pipeline is in place, select backfill may be used to bed and protect the pipe. Following this, subsoil and topsoil are replaced in the sequence in which they were removed.

Inspections were conducted for the excavated soil placed in the trench over the installed pipe. The Indigenous Monitors observed sand and subsoil being backfilled over the pipe prior to topsoil being replaced and ensured backfill activities were confined to the construction right-of-way. No issues or potential chance finds were identified.



Backfill in progress at KP 433.

Site Housekeeping

Indigenous Monitors regularly conduct inspections of the various construction areas for general housekeeping measures. This includes observing and documenting waste storage management, fuel storage containment and proper use of vehicle and equipment spill kits. Waste or construction materials not properly disposed of or secured are reported to the Environmental Inspectors and respective site services crew for maintenance.

Between KP 369 and KP 433, Indigenous Monitors confirmed signage is up to date, required flagging and staking is present, housekeeping is compliant, secondary containment is in use, spill kits are inspected for volume and types of spill response material and ensured the appropriate placement in relation to work fronts. No deficiencies were identified.



Good housekeeping at KP 433.




Indigenous Monitor Request Dashboard

Indigenous Monitors are provided with daily on-site field support from Environmental Inspectors and office support from Indigenous Monitor Coordinators. Indigenous Monitors can also make specific support requests or submit questions through their daily report. Examples include but are not limited to requests for Project reports, input from an environmental resource specialist and on-site support from an Elder or other cultural knowledge holder. Requests and their completion status are noted below.

Status	Rolling Total and Type of Requests				
	Project Reports/Documents	Environmental Resource Specialists	Elder/Cultural Knowledge Holder	Other	Total
Total	1	-	-	-	1
Fulfilled	1	-	-	-	1
Outstanding	-	-	-	-	-

This report has been reviewed by the active Indigenous Monitor(s)

CONTACT US:

Trans Mountain
 info@transmountain.com
 1.866.514.6700
 transmountain.com

  @TransMtn

 youtube.com/transmtn



 PO Box 81018
 Burnaby, BC V5H 3B0

