

INDIGENOUS MONITOR OVERVIEW REPORT

Month: February 2022

Indigenous Monitor days on-site: 22

**Project Region: Jasper to Mount
Robson Reactivation**

**Kilometre Posts (KPs) monitored:
KP 322–461**

Indigenous Monitors on the Trans Mountain Expansion Project – Overview

The Trans Mountain Expansion Project (the Project or TMEP) is retaining Indigenous Monitors as integrated members of its construction Environmental Inspection team. Indigenous Monitors work with Environmental Inspectors to monitor compliance with mitigation measures to minimize impacts to traditional resource use and cultural/heritage sites during TMEP construction.

Operations and maintenance work, including integrity digs and sleeve replacements occurring along the deactivated pipeline segments in Jasper National Park and Mount Robson Provincial Park is not part of TMEP nor subject to TMEP Conditions. However, Trans Mountain will include Indigenous Monitors during certain operations and maintenance work in reactivation areas as it relates to preparing for future TMEP construction activities.

This Overview Report provides highlights of the Indigenous Monitors' day-to-day work and key mitigation measures observed by the Monitors related to Project construction in the Jasper to Mount Robson Reactivation Region. The purpose of this report is to provide an update on Indigenous Monitor activity to Indigenous groups.

During this reporting period, key activities in the Jasper to Mount Robson Reactivation Region involving Indigenous Monitors took place from KP 322–461 and included construction site housekeeping and watercourse/wetland crossing inspections. The Project Construction Progress Report (Condition 106) for February 2022, which reports environmental events and deficiencies in Tables 4 and 5 respectively, is found [here](#).

The Project has a process for sharing information related to potential Traditional Land Use (TLU) and Heritage Resource chance finds during construction. The [Protecting TLU and Cultural Heritage Resources Fact Sheet \(link here\)](#) provides an overview of the chance find communication process. Applicable Indigenous groups are notified and engaged directly on potential chance finds.

For more information: email info@transmountain.com or call 1.866.514.6700.

Trans Mountain COVID-19 – Our Response

Trans Mountain is actively monitoring the COVID-19 situation with the help of federal, provincial and local agencies. Trans Mountain's top priority remains the health and safety of its workforce, their families and our communities.

For more information: transmountain.com/covid19.

Construction Site Housekeeping

Indigenous Monitors regularly conduct inspections of the various construction areas for general housekeeping measures. This includes observing and documenting waste storage management, fuel storage containment and proper use of vehicle and equipment spill kits.

Waste or construction materials not properly disposed of or secured are reported to the Environmental Inspectors and respective site services crew for cleanup. The recycling bins are also inspected to make sure waste is properly segregated into appropriate categories. These include general recyclables, wood, general waste and spent construction materials.

In February, Indigenous Monitors focused on housekeeping as crews mobilize in and out of dig areas. Changes in weather can create hazards on an untidy construction site. Indigenous Monitors focused on items that would become a hazard if covered in snow and assessed if spill containment was in place on equipment. A small spill was identified in a secondary containment under a light plant. The Indigenous Monitor notified the contractor working on-site and the spill was cleaned up immediately and disposed of at an approved facility.



Small spill in containment at Dig 46 KP 432.



Spill response underway at Dig 46 KP 432.

Watercourse Crossings

Environmental mitigation measures for in-stream construction of watercourses are prescribed in the provincial permit and the watercourse crossing plan, and in some cases, a DFO authorization. Mitigation measures required for in-stream construction include but are not limited to biosecurity cleaning of equipment, secondary containment of hydrocarbons, stream bed material, fish salvage, water quality monitoring and sediment/erosion control.

In February, Fraser 7 in-stream work started. Before the work began, Indigenous Monitors were asked to join the Resource Specialists in a training course on swift water rescue, with details of how to stay safe and help with your own rescue.



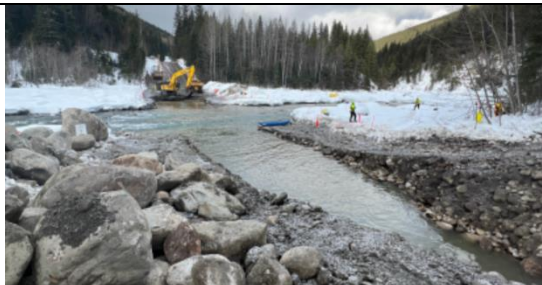
Drag section west bank of Fraser 7 KP 461.



Fraser 7 KP 461.

Indigenous Monitors communicated regularly with the on-site resource specialists, with a focus on turbidity monitoring. This work was only able to be executed during daylight hours, so all mitigation measures could be observed during the work activity.

Indigenous Monitors returned to Fraser 7 several times to observe construction and inspect environmental mitigation measures. The watercourse crossing plans were executed as intended and no unplanned events took place during construction on Fraser 7.



Trench excavation at Fraser 7 KP 461.

Wetland Crossings

Wetland crossing requirements are outlined in the Environmental Protection Plan, Site-Specific Wetland Crossing Execution Plan and applicable Provincial permits. An Indigenous Monitor reviewed the requirements outlined in the above documents before and during their inspections. These inspections consider spill response and mitigations, topsoil being stored separately from upland soils and erosion and sediment control (ESC) measures.

At Dig 46 (KP 432), an Indigenous Monitor reviewed the Site-Specific Wetland Crossing Execution Plan. The crossing plan requires wetland topsoils to be stored separately from upland soils. Indigenous Monitor completed a Focus Inspection of soil stripping during the execution of this work. No deficiencies were found. In saturated soil, pump-off is a regular requirement to keep excavations open and safe. The pump-off location was inspected during pump-off activity. The Indigenous Monitor inspected to ensure there was no sediment loading, replacement materials were available and the pump-off location was at least 50 metres from the nearest watercourse in a location approved by an Environmental Inspector. The Indigenous Monitor will continue to inspect the site and monitor de-watering activities throughout the duration of the crossing. No environmental concerns were identified.



Wetland topsoil stored separately from upland soils at Dig 42 KP 432.



Topsoil stripping at Dig 42 KP 432.



Sediment trap in use for pump-off at Dig 46 KP 432.

Indigenous Monitor Request Dashboard

Indigenous Monitors are provided with daily on-site field support from Environmental Inspectors and office support from Indigenous Monitor Coordinators. Indigenous Monitors can also make specific support requests or submit questions through their daily report. Examples include but are not limited to requests for Project reports, input from an environmental resource specialist or on-site support from an Elder or other cultural knowledge holder. Requests and their completion status are noted below.

Status	Rolling Total and Type of Requests				
	Project Reports/Documents	Environmental Resource Specialists	Elder/Cultural Knowledge Holder	Other	Total
Total	1	-	-	-	1
Fulfilled	1	-	-	-	1
Outstanding	-	-	-	-	-

This report has been reviewed by the active Indigenous Monitor(s)

CONTACT US: Trans Mountain

✉ info@transmountain.com
☎ 1.866.514.6700
🌐 transmountain.com

🐦 [@TransMtn](https://twitter.com/TransMtn)

📺 youtube.com/transmtn

🌐 [in](https://www.linkedin.com/company/transmountain/)

📍 PO Box 81018
Burnaby, BC V5H 3B0

