

INDIGENOUS MONITOR OVERVIEW REPORT

Month: April 2022

Project Region: Lower Mainland

Indigenous Monitor days on-site: 21

**Kilometre Posts (KPs) monitored:
Spread 7 KP 1165–1176**

Indigenous Monitors on the Trans Mountain Expansion Project – Overview

The Trans Mountain Expansion Project (the Project or TMEP) has retained Indigenous Monitors as integrated members of its construction Environmental Inspection team. Indigenous Monitors work with Environmental Inspectors to monitor compliance with mitigation measures to minimize impacts to traditional resource use and cultural/heritage impacts during construction. Indigenous Monitors have a strategic role in providing traditional knowledge directly and pragmatically to construction oversight practices and bring an Indigenous lens to daily environmental inspection activities.

This Overview Report provides highlights of the Indigenous Monitors' day-to-day work and key mitigation measures observed by the Monitors related to Project construction in the Lower Mainland. The purpose of this report is to provide an update on Indigenous Monitor activity to Indigenous groups.

During this reporting period, key Project activities in the Lower Mainland region involving Indigenous Monitors include construction at Westridge Marine Terminal (WMT), Burnaby Terminal and on Spread 7B. Activities included erosion and sediment control measures, construction housekeeping, regulator meetings and the Burnaby Mountain Tunnel at WMT.

The Project Construction Progress Report (Condition 106) for April 2022, which reports environmental events and deficiencies in Tables 4 and 5 respectively, is found [here](#).

The Project has a process for sharing information related to potential Traditional Land Use (TLU) and Heritage Resource chance finds during construction. The Protecting TLU and Cultural Heritage Resources Fact Sheet ([link here](#)) provides an overview of the chance find communication process. Applicable Indigenous groups are notified and engaged directly on potential chance finds.

For more information: email info@transmountain.com or call 1.866.514.6700.

Trans Mountain COVID-19 – Our Response

Trans Mountain is actively monitoring the COVID-19 situation with the help of federal, provincial and local agencies. Trans Mountain's top priority remains the health and safety of its workforce, their families and our communities.

For more information: transmountain.com/covid19

Erosion and Sediment Control

Erosion and sediment control (ESC) measures are used to reduce erosion and limit sediment transport across construction sites to sensitive environmental features.

The Lower Mainland experienced heavy precipitation in April, making ESC a high priority. Indigenous Monitors, alongside Environmental Inspectors inspected ESC measures throughout the terminals and Construction Work Packages (CWPs) on Spread 7B. Inspections were completed in areas including but not limited to KP 1175, KP 1176, KP 1176 and KP 1179. ESC mitigations inspected included sediment fences, swales, wattles, straw bales, check-dams, polyethylene sheeting on slopes and stockpiled soil. Monitoring of Aqua-Solve tanks used for treating contaminated and sediment-laden water was also conducted at KP 1174 and KP 1177. No issues were observed during inspection.

At Burnaby Terminal and WMT, the Indigenous Monitor conducted daily inspections to verify ESC measures throughout the terminals were installed effectively as prescribed in the Environmental Protection Plan. This included inspecting berms and exposed slopes were securely covered with polyethene sheeting and hydroseed was correctly applied. Ditches and other water conveyance measures throughout the terminal and along the perimeter of the Project footprint were also inspected to ensure they were free of construction materials and debris. At Burnaby Terminal, the need for silt fencing repair near the retention pond was noted. The deficiency was reported and addressed by the contractor.



Hydroseeding at Burnaby Terminal near Lower Road.



Perimeter ditch flowing clean into the retention pond at Burnaby Terminal.



Silt fence installed effectively at CWP 107.

Regulator Meetings and Inspections

Fisheries and Oceans Canada (DFO) and the Indigenous Advisory Monitoring Committee (IAMC) conduct meetings with WMT. Foreshore and marine construction progress was discussed, as well as environmental mitigation measures such as erosion and sediment control measures (e.g., turbidity curtains, shoreline slope protection), waste containment and management, bubble curtains and underwater noise monitoring.

An independent monitor working on behalf of the Vancouver Fraser Port Authority (VFPA) also conducts bi-weekly inspections at WMT.

The Indigenous Monitor at WMT participated in the DFO and IAMC meetings, as well as the VFPA inspections and is an active participant in discussions about the effectiveness of ongoing environmental mitigation and monitoring measures.



Marine safety boom observed at WMT during a bi-weekly inspection with the VFPA.

Site Housekeeping

The Indigenous Monitors in the Lower Mainland regularly conduct inspections of the various construction areas for general housekeeping measures. This includes observing and documenting recycling and waste management and hazardous materials containment.

The Indigenous Monitor conducted housekeeping inspections at Burnaby Terminal and WMT. If a deficiency is observed, the contractor is notified by the Environmental Inspector and corrective actions are taken. During the inspection, the Indigenous Monitor identified and reported two deficiencies relating to improper waste segregation and a missing spill tray underneath a generator. Both deficiencies were corrected by the contractor at the time of inspection.

On Spread 7B, the Indigenous Monitor observed effective placement of secondary containment and proper waste segregation at KP 1165, KP 1174, KP 1175 and KP 1179, as well as spill kits properly stored near the watercourse (feature ID BC 784a) at KP 1175.



Aerosol cans properly stored at Burnaby Terminal near Lower Road.



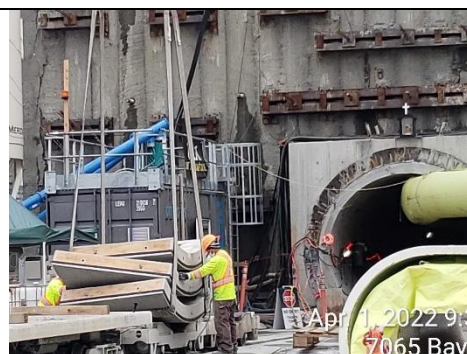
Secondary containment effectively placed at WMT.

Burnaby Mountain Tunnel – WMT

As part of the Expansion Project, Trans Mountain is constructing an underground tunnel to connect Burnaby Terminal and WMT, avoiding impacts on residents and existing infrastructure. Trans Mountain's contractor is using a tunnel boring machine (TBM) to construct a 2.6-km tunnel through Burnaby Mountain, starting at WMT. For more information about the tunnel visit the Trans Mountain website [here](#).

The portal area at WMT is the level staging area where the TBM was assembled and where excavation is underway. In April, the TBM reached 50 per cent completion. During tunnelling activities, the Indigenous Monitor observes and inspects that environmental mitigation associated with the handling, management and disposal of tunnel soil and rock spoils are functioning as intended.

The Indigenous Monitor at WMT continues to observe the TBM construction activities and stormwater management.



Staging area for the TBM at WMT. Segments of the tunnel wall to be transported into the tunnel.

Indigenous Monitor Request Dashboard

Indigenous Monitors are provided daily on-site field support from Environmental Inspectors and office support from Indigenous Monitor Coordinators. Indigenous Monitors can also make specific support requests or submit questions through their daily report. Examples include but are not limited to requests for Project reports, input from an environmental resource specialist or on-site support from an Elder or other cultural knowledge holder. Requests and their completion status are noted below.

Status	Rolling Total and Type of Requests				
	Project Reports/ Documents	Environmental Resource Specialists	Elder/Cultural Knowledge Holder	Other	Total
Total	2	0	0	0	2
Fulfilled	2	-	-	-	2
Outstanding	-	-	-	-	-

This report has been reviewed by the active Indigenous Monitor(s)

CONTACT US:

Trans Mountain

info@transmountain.com

1.866.514.6700

transmountain.com

@TransMtn

youtube.com/transmtm

in

PO Box 81018
Burnaby, BC V5H 3B0

