

INDIGENOUS MONITOR OVERVIEW REPORT

Month: May 2022

Project Region: Lower Mainland

Indigenous Monitor days on-site: 22

**Kilometre Posts (KPs) monitored:
Spread 7 KP 1165–1176**

Indigenous Monitors on the Trans Mountain Expansion Project – Overview

The Trans Mountain Expansion Project (the Project or TMEP) has retained Indigenous Monitors as integrated members of its construction Environmental Inspection team. Indigenous Monitors work with Environmental Inspectors to monitor compliance with mitigation measures to minimize impacts to traditional resource use and cultural/heritage impacts during construction. Indigenous Monitors have a strategic role in providing traditional knowledge directly and pragmatically to construction oversight practices and bring an Indigenous lens to daily environmental inspection activities.

This Overview Report provides highlights of the Indigenous Monitors' day-to-day work and key mitigation measures observed by the Monitors related to Project construction in the Lower Mainland. The purpose of this report is to provide an update on Indigenous Monitor activity to Indigenous groups.

During this reporting period, key Project activities in the Lower Mainland region involving Indigenous Monitors include construction at Westridge Marine Terminal (WMT), Burnaby Terminal and on Spread 7B. Activities included erosion and sediment control measures, concrete management, construction housekeeping and wildlife management.

The Project Construction Progress Report (Condition 106) for May 2022, which reports environmental events and deficiencies in Tables 4 and 5 respectively, is found [here](#).

The Project has a process for sharing information related to potential Traditional Land Use (TLU) and Heritage Resource chance finds during construction. The Protecting TLU and Cultural Heritage Resources Fact Sheet ([link here](#)) provides an overview of the chance find communication process. Applicable Indigenous groups are notified and engaged directly on potential chance finds.

For more information: email info@transmountain.com or call 1.866.514.6700.

Trans Mountain COVID-19 – Our Response

Trans Mountain is actively monitoring the COVID-19 situation with the help of federal, provincial and local agencies. Trans Mountain's top priority remains the health and safety of its workforce, their families and our communities.

For more information: transmountain.com/covid19

Erosion and Sediment Control

Erosion and sediment control (ESC) measures are used to reduce erosion and limit sediment transport across construction sites to sensitive environmental features.

Indigenous Monitors alongside Environmental Inspectors inspected ESC measures throughout the terminals and Construction Work Packages (CWPs) on Spread 7B. Inspections were completed in areas including but not limited to KP 1165, KP 1175, KP 1176 and KP 1177. ESC mitigations inspected included; sediment fences, swales, wattles, straw bales, check-dams, polyethylene sheeting on slopes and stockpiled soil. No issues were observed during inspection.

At Burnaby Terminal and WMT, the Indigenous Monitor conducted daily inspections to verify ESC measures throughout the terminals were installed effectively as prescribed in the Environmental Protection Plan. This included ensuring berms and exposed slopes were securely covered with polyethylene sheeting and hydroseed was correctly applied. Check-dams, ditches and other water conveyance measures throughout the terminal and along the perimeter of the Project footprint. At Burnaby Terminal, the Indigenous Monitor observed that polyethylene sheeting placed on a slope near the Burnaby Tunnel exit area had come loose and was no longer functioning as intended. This deficiency was reported and fixed by the contractor.

During routine inspections of the foreshore at WMT, the Indigenous Monitor observed the effectiveness of turbidity curtains installed in the surrounding marine areas. Turbidity curtains are installed in various areas at the WMT shoreline. An important year-round environmental protection mitigation, they are monitored and inspected regularly for integrity and effectiveness.

During an inspection, the Indigenous Monitor observed the turbidity curtain to be working effectively and in good standing order. No issues were identified during inspection.



Check-dam at WMT cleaned of debris during inspection.



Double silt fence and straw wattles installed adjacent to watercourse feature ID BC 784A at KP 1175.



Turbidity curtain functioning as intended along the foreshore at WMT.



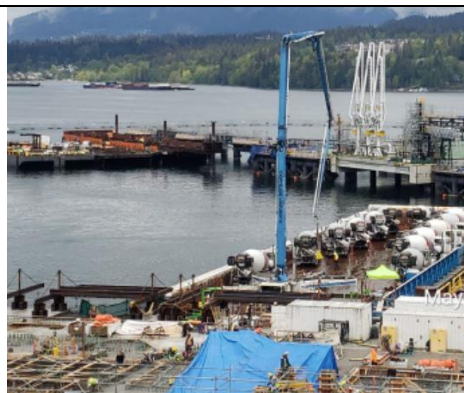
Topsoil covered in polyethylene sheeting and labelled at Burnaby Terminal.

Concrete Management

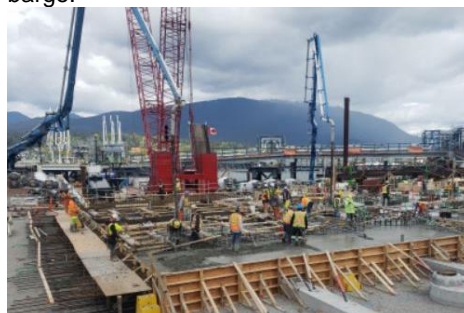
In the Lower Mainland, concrete is used in many of the terminal construction activities. During the pouring of concrete, environmental protection mitigations are implemented to isolate the concrete work and to prevent spillage of concrete or grout onto the ground or into the ocean and/or watercourses. These mitigations include; ensuring all concrete work is completed during dry conditions and properly contained within sealed forms using containments for any concrete waste storage. Concrete contact water is also managed by either treating it in a water treatment plant or collecting it and transporting it to a Trans Mountain-approved facility.

At WMT, the foreshore ground improvements are complete and concrete is being poured to finish development of the area. In May, the Indigenous Monitor observed concrete pours at various construction work areas along the foreshore.

At Burnaby Terminal, concrete is poured into circular frames to form the new storage tank foundations and sprayed onto rebar to create reinforcement walls around the new tank areas. The Indigenous Monitor observed concrete pours for the foundation of Tank 98. No deficiencies were observed during inspections.



Concrete pour at construction work area 108 on the WMT foreshore. Concrete trucks used for the pour are parked on a barge.



Forms at construction work area 108 on the WMT foreshore that will be filled with concrete.



Cement pour at Burnaby Terminal Tank 98.

Site Housekeeping

The Indigenous Monitors in the Lower Mainland regularly conduct inspections of the various construction areas for general housekeeping measures. This includes observing and documenting waste management practices and hazardous materials containment.

The Indigenous Monitor conducted housekeeping inspections at Burnaby Terminal and WMT. If a deficiency is observed, the contractor is notified by the Environmental Inspector and corrective actions are taken. During inspections, the Indigenous Monitor at WMT identified and reported minor housekeeping deficiencies. Improper waste segregation was observed as well as a missing spill tray underneath a front-end loader and an excavator. These deficiencies were corrected by the contractor at the time of inspection.



Secondary containment properly placed underneath a hydro-vac truck at Burnaby Terminal.

Wildlife Management

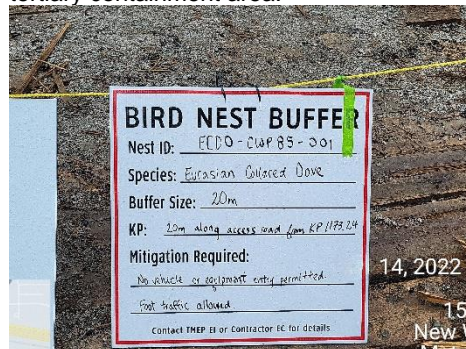
Indigenous Monitors participated in discussions relating to wildlife protection strategies with Environmental Inspectors and Wildlife Specialists. In May, Indigenous Monitors inspected mitigation measures to ensure protection measures are in place including routine and pre-construction activity wildlife sweeps.

At Burnaby Terminal, a tree frog and salamander were discovered within the terminal footprint. Both amphibians were relocated to the designated tertiary containment area.

On Spread 7B, the Indigenous Monitor observed that bird nest buffers were installed and clearly visible at KP 1172, KP 1173 and KP 1175, as well as on the Canfor temporary workspace.



Tree frog discovered in the firewater pond at Burnaby Terminal and relocated to the tertiary containment area.



Bird nest buffer and signage installed at KP 1173.

Indigenous Monitor Request Dashboard

Indigenous Monitors are provided daily on-site field support from Environmental Inspectors and office support from Indigenous Monitor Coordinators. Indigenous Monitors can also make specific support requests or submit questions through their daily report. Examples include, but are not limited to, requests for Project reports, input from an environmental resource specialist or on-site support from an Elder or other cultural knowledge holder. Requests and their completion status are noted below.

Status	Rolling Total and Type of Requests				
	Project Reports/ Documents	Environmental Resource Specialists	Elder/Cultural Knowledge Holder	Other	Total
Total	2	0	0	0	2
Fulfilled	2	-	-	-	2
Outstanding	-	-	-	-	-

This report has been reviewed by the active Indigenous Monitor(s)

CONTACT US:

Trans Mountain

✉ info@transmountain.com

☎ 1.866.514.6700

🌐 transmountain.com

🐦 @TransMtn

📺 youtube.com/transmtn

🌐

📍 PO Box 81018
Burnaby, BC V5H 3B0

