

## INDIGENOUS MONITOR OVERVIEW REPORT

---

**Month: June 2022**

**Project Region: North Thompson  
(Spread 3/4A and Spread 4B)**

**Indigenous Monitor days on-site: 26**

**Kilometre Posts (KPs) monitored:  
Spread 3/4A: KP 470–696  
Spread 4B: KP 697–764**

### **Indigenous Monitors on the Trans Mountain Expansion Project – Overview**

The Trans Mountain Expansion Project (the Project or TMEP) has retained Indigenous Monitors as integrated members of its construction Environmental Inspection team. Indigenous Monitors work with Environmental Inspectors to monitor compliance with mitigation measures to minimize impacts to traditional resource use and cultural/heritage sites during construction. Indigenous Monitors have a strategic role in providing traditional knowledge directly and pragmatically to construction oversight practices and bring an Indigenous lens to daily environmental inspection activities.

This Overview Report provides highlights of the Indigenous Monitors' day-to-day work and key mitigation measures observed by the Monitors related to Project construction in the North Thompson Region. The purpose of this report is to provide an update on Indigenous Monitor activity to Indigenous groups.

During this reporting period, key activities in the North Thompson Region involving Indigenous Monitors took place from KP 470–696 in Spread 3/4A and 697–764 in Spread 4B and included culturally modified tree (CMT) sweeps, wildlife management and bird sweeps, pump station, water pump-off and streambed restoration inspections. The Project Construction Progress Report (Condition 106) for June 2022, which reports environmental events and deficiencies in Tables 4 and 5 respectively, is found [here](#).

The Project has a process for sharing information related to potential Traditional Land Use (TLU) and Heritage Resource chance finds during construction. The [Protecting TLU and Cultural Heritage Resources Fact Sheet \(link here\)](#) provides an overview of the chance find communication process. Applicable Indigenous groups are notified and engaged directly on potential chance finds.

**For more information: email [info@transmountain.com](mailto:info@transmountain.com) or call 1.866.514.6700.**

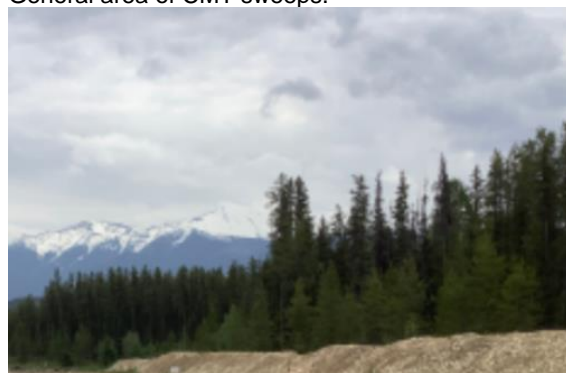
### Culturally Modified Trees (CMT)

Resource-Specific Mitigation Tables (RSMT) and Environmental Alignment Sheets are used to illustrate locations of and summarize specified mitigation for previously identified historical resources and TLU areas. Such locations have been identified via TLU studies conducted by Indigenous groups and archaeology baseline assessments that have been conducted in relation to the Project for more than seven years. If a site or location is observed in the field that may be a previously unidentified TLU area, the TLU Site Discovery Contingency Plan is followed.

An Indigenous Monitor inspected the site of a previously identified CMT near KP 600. The site-specific mitigations were followed as described in the RSMT. If a potential CMT were identified, the TLU Site Discovery Contingency Plan would be implemented. Indigenous Monitors continue conducting CMT sweeps ahead of construction activity.



General area of CMT sweeps.



General area of CMT sweeps.

### Pump-Off

To keep trench excavation areas dewatered and stable during pipeline construction, water that accumulates from precipitation or groundwater seepage is pumped off and relocated to an approved location either on or off the construction footprint. At KP 742, water accumulating in the excavated pipeline trench was pumped off to a settling containment system. Water flowing out of the filtration system was discharged upland to a well-vegetated area.

An Indigenous Monitor inspected to verify the settling containment system was functioning as intended and that no sediment loading was identified at the discharge point. It was observed that pump-off water was released a minimum of 50 m from the nearest watercourse, replacement materials were readily available, including sediment control devices, pumps, spills kits and secondary containment, and housekeeping of off-construction footprint locations. No deficiencies were identified.



Pump-off sediment containment working as intended at KP 742.

## Pump Station Inspections

An Indigenous Monitor and Environmental Inspector conducted inspections at the McMurphy and Blackpool Pump Stations, following the measures outlined in Trans Mountain's Facilities Environmental Protection Plan. The inspections included general site housekeeping, waste segregation, recycling and equipment inspections (ensuring proper use of drip trays).

During the inspection at the McMurphy Pump Station (KP 667.2), bear safety was a focus after a black bear and cubs were sighted in the area. IMs inspected waste segregation, with a focus on food waste, and was confirmed to be compliant with waste handling procedures. Open excavations were properly delineated with signage, snow fencing and larger physical barriers when needed. Erosion and sediment control measures were inspected and observed to be in good repair. No concerns were identified.

At the Blackpool Pump Station (KP 732), soil was being hauled in for final grade work and fence installation was under way. The Indigenous Monitor confirmed that proper housekeeping and waste separation were in use and that mitigations for active bird nests were in place, including buffer zones and signage. No concerns were identified at the time of inspection.



McMurphy Pump Station KP 667.



McMurphy Pump Station KP 667.



Blackpool Pump Station KP 732.

## Wildlife Management

While conducting site monitoring, the Indigenous Monitors record and report wildlife sightings to the Environmental Inspector. They also participate in discussions with the Environmental Inspection team relating to wildlife protection strategies and monitor and inspect that mitigation measures like environmental feature signage and buffers are effectively in place.

Indigenous Monitors participated in wildlife sweeps, including amphibian, migratory nesting bird and badger sweeps alongside the Resource Specialist prior to clearing and/or other construction activity. Nesting birds that require



Bird sweeps KP 652.



protection include species of migratory birds and those listed federally and/or provincially. Active nests require mitigation (e.g., avoidance or monitoring).

Resource Specialists performed sweeps in all areas where active construction is or will soon be underway. An Indigenous Monitor joined bird sweeps between KP 478 and KP 652. After bird sweeps were completed, the Indigenous Monitor and Environmental Inspectors confirmed that proper buffers and signage were in place and continue to communicate daily about active bird nest locations and mitigations. During one inspection, the signage for a buffer zone was down and the Indigenous Monitor replaced it at that time. No other issues were identified.

### Stream Bed Restoration

Once in-stream work is complete, restoration of the riparian zone is conducted, including recontouring watercourse beds and banks to pre-construction conditions. Additional work includes replacing site-specific features important for fish or other aquatic organisms and replacing salvaged topsoil, surface soils and salvaged root zone material like root balls (i.e., roots of shrubs and trees) in proper sequence over all portions of the construction site where soil cover was stripped.

Construction has been completed through Unnamed Channel BC-328 as planned. Erosion and sediment control (ESC) measures were monitored; these measures mitigate erosion and sediment transport from construction sites to downstream areas and watercourses. On-site ESC mitigations may include sediment fences, swales, wattles, rock armouring, erosion control blankets and hydroseeding, as well as water drainage control measures.

An Indigenous Monitor observed and inspected cleanup and restoration activities at Unnamed Channel BC-328. Activities observed included site housekeeping efforts, recontour of the bank, transplant areas including erosion control blanket, willow stakes in riparian zones, re-seeding in previously excavated and backfilled areas and rock armouring and stream bed



Bird nest chance find near KP 561.



Bird nest buffer KP 635.



Stream bed restoration BC-328 KP 641.



Restoration complete BC-328 KP 641.

material replacement. These mitigations were installed and working as planned. No deficiencies were identified.

## Indigenous Monitor Request Dashboard

Indigenous Monitors are provided with daily on-site field support from Environmental Inspectors and office support from Indigenous Monitor Coordinators. Indigenous Monitors can also make specific support requests or submit questions through their daily report. Examples include but are not limited to requests for Project reports, input from an environmental resource specialist and on-site support from an Elder or other cultural knowledge holder. Requests and their completion status are noted below.

Status	Rolling Total and Type of Requests				
	Project Reports/Documents	Environmental Resource Specialists	Elder/Cultural Knowledge Holder	Other	Total
Total	0	0	1	0	1
Fulfilled	0	-	1	-	1
Outstanding	-	-	-	-	-

This report has been reviewed by the active Indigenous Monitor(s)

### CONTACT US:

Trans Mountain

 [info@transmountain.com](mailto:info@transmountain.com)

 1.866.514.6700

 [transmountain.com](http://transmountain.com)



 @TransMtn



[youtube.com/transmtn](https://www.youtube.com/transmtn)



PO Box 81018

Burnaby, BC V5H 3B0

