

INDIGENOUS MONITOR OVERVIEW REPORT

Month: October 2023
Project Region: North Thompson
(Spread 3/4A and Spread 4B)

Indigenous Monitor days on-site: 26
Kilometre Posts (KPs) monitored:
Spread 3/4A: KP 470–696
Spread 4B: KP 697–764

Indigenous Monitors on the Trans Mountain Expansion Project – Overview

The Trans Mountain Expansion Project (the Project or TMEP) has retained Indigenous Monitors as integrated members of its construction Environmental Inspection team. Indigenous Monitors work with Environmental Inspectors to monitor compliance with mitigation measures to minimize impacts to traditional resource use and cultural/heritage sites during construction. Indigenous Monitors have a strategic role in providing traditional knowledge directly and pragmatically to construction oversight practices and bring an Indigenous lens to daily environmental inspection activities.

This Overview Report provides highlights of the Indigenous Monitors' day-to-day work and key mitigation measures observed by the Monitors related to Project construction in the North Thompson Region. The purpose of this report is to provide an update on Indigenous Monitor activity to Indigenous groups.

During this reporting period, key activities in the North Thompson Region involving Indigenous Monitors took place from KP 470–KP 696 in Spread 3/4A and reclamation monitoring KP 697–KP 764 in Spread 4B and included temporary construction lands, erosion and sediment control (ESC), watercourse restoration monitoring, Traditional Land Use (TLU) sites and reclamation. Construction on Spread 3/4A and 4B is mechanically complete, with final cleanup and reclamation activities ongoing. The Project Construction Progress Report (Condition 106) for October 2023, which reports environmental events and deficiencies in Tables 4 and 5 respectively, is found [here](#).

The Project has a process for sharing information related to potential TLU and Heritage Resource chance finds during construction. The [Protecting TLU and Cultural Heritage Resources Fact Sheet \(link here\)](#) provides an overview of the chance find communication process. Applicable Indigenous groups are notified and engaged directly on potential chance finds.

For more information: email info@transmountain.com or call 1.866.514.6700.

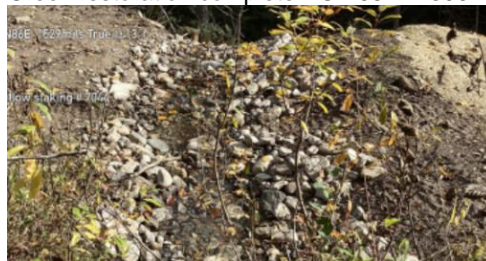
Watercourse Restoration Monitoring

Environmental mitigation measures for in-stream construction of watercourses are prescribed in the provincial permits and the watercourse crossing plans, and in some cases, a Fisheries and Oceans Canada (DFO) authorization. Mitigation measures required for in-stream construction include but are not limited to biosecurity cleaning of equipment, secondary containment of hydrocarbons, salvaging of stream bed material, fish salvage, water quality monitoring and sediment/erosion control. When in-stream work is complete, Indigenous Monitors regularly monitor watercourse crossings. Erosion and sediment control (ESC) measures are monitored; these measures mitigate erosion and sediment transport from construction sites to downstream areas and watercourses.

Indigenous Monitors inspected the effectiveness of restorations completed for several watercourses in Spread 3,4A, including BC-166 KP 596, BC-167 KP 596, BC-168 KP 596, BC-172 KP 600, BC-172a KP 600 BC-173 KP 601, BC-175a KP 604 and BC-176 KP 605. The Indigenous Monitor observed site housekeeping efforts, recontour of the bank and transplant areas, including erosion control blanket, willow stakes in riparian zones, reseeding in previously excavated and backfilled areas, and rock armouring and stream bed material replacement. These mitigations were installed and working as planned.



Creek restoration complete BC-168 KP 596.



Creek restoration at BC-172 KP 600.



Restoration complete BC-176 KP 605.

Temporary Construction Lands

Temporary construction lands and infrastructure are defined for the Project as preparatory work areas to support Project construction and include temporary camps, stockpile sites and equipment staging areas. Many of the sites, addressed in the Temporary Construction Lands and Infrastructure Environmental Protection Plan, are on previously developed lands.

The Blue River Camp Community closed at the end of August 2023. An Indigenous Monitor inspected the Blue River Camp during demobilization activities in October. The inspection focused on ongoing housekeeping during the work. No issues were identified. The Indigenous Monitor is expected to inspect the site again as demobilization is complete.



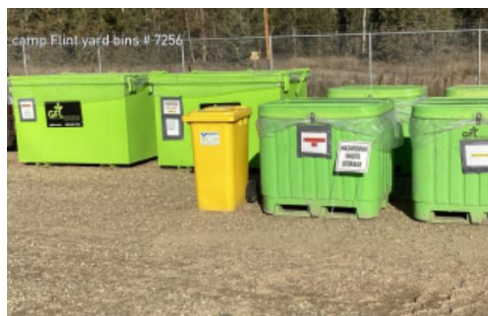
Blue River Camp early October.



Blue River Camp

Spread 4B Reclamation

The Indigenous Monitor worked with an Environmental Inspector to ensure mitigation measures were in place during demobilization activities. An inspection of the Clearwater Camp yard was completed, with a focus on housekeeping, waste segregation and spill preparedness. The Indigenous Monitor reviewed daily communications about activities on the spread and monitoring of ESC measures ongoing. No environmental concerns were identified.



Clearwater Camp yard inspection.



Good housekeeping Clearwater yard.

Erosion and Sediment Control

Site-specific erosion and sediment control (ESC) measures are implemented to prevent sediment-laden runoff from leaving the right-of-way or from entering watercourses and wetlands. Key areas where ESC measures are required can include soil excavations, exposed slopes, soil stockpiles and locations near watercourses.

On-site ESC mitigations may include sediment fences, swales, wattles, rock armouring, erosion control blankets and hydroseeding, coarse woody debris (CWD), as well as water drainage control measures.

ESC measures are a major focus as crews prepare for spring runoff. The Indigenous Monitor inspected ESC mitigations on spread 3,4A between KP 490 and KP 683, including wing walls and silt fencing through several wetlands, erosion control blankets secured with willow stakes, rock armouring, swales and placement of CWD in and around the several watercourse crossings and steep slopes. Locations monitored included BC-166 KP 596, BC-167 KP 596, BC-168 KP 596, BC-172 KP 600, BC-172a KP 600 BC-173 KP 601, BC-175a KP 604 and BC-176 KP 605. No deficiencies were identified.



Seeding and ESC in place KP 683.

TLU Sites

Resource Specific Mitigation Tables and Environmental Alignment Sheets are used to identify locations of and summarize specified mitigation for previously identified historical resources and TLU areas. Such locations have been identified via TLU studies conducted by Indigenous groups and archaeology baseline assessments conducted over many years of Project planning.

During pre-construction survey activities, previously identified TLU areas are marked with flagging ribbon and stakes by Resource Specialist crews during the environmental flagging and staking program. Signage is also installed to indicate to construction crews that a feature is present in the area.

Indigenous Monitors inspected TLU areas and archaeological sites to verify staking and signage remains in good standing condition. Ongoing monitoring by the Indigenous Monitors continues at such sites.



Mitigations in place at TLU site.

Reclamation

Subsoil is decompacted to alleviate compaction caused by construction activities before topsoil replacement. Acceptable topsoil depths are confirmed by an Environmental Inspector (EI) during final cleanup. Multiple measurements are taken of topsoil replacement quality and depth. After the contractor has properly prepared the ground for seed, the area is seeded with the approved mix that reflects the vegetation profile from pre-disturbance.

Indigenous Monitors inspected various reclamation activities on Spread 3,4A, including discing for soil decompaction, topsoil replacement, confirming topsoil depth, erosion and sediment control measures, confirmation that proper seed mixes are applied and monitoring regrowth and stability. Indigenous Monitors worked with Environmental Inspectors to ensure mitigation measures were in place and working as intended during reclamation activities. Indigenous monitors also returned to previously reclaimed areas to inspect regrowth and mortality rates and to make sure no construction debris is left behind. Deficiencies noted are communicated to the EI team and recorded for contractor remediation.



Reclamation complete and regrowth KP 504.



Reclamation and regrowth KP 659.

Indigenous Monitor Request Dashboard

Indigenous Monitors are provided with daily on-site field support from Environmental Inspectors and office support from Indigenous Monitor Coordinators. Indigenous Monitors can also make specific support requests or submit questions through their daily report. Examples include but are not limited to requests for Project reports, input from an environmental resource specialist or on-site support from an Elder or other cultural knowledge holder. Requests and their completion status are noted below.

Status	Rolling Total and Type of Requests				
	Project Reports/Documents	Environmental Resource Specialists	Elder/Cultural Knowledge Holder	Other	Total
Total	0	0	2	0	2
Fulfilled	0	-	2	-	2
Outstanding	-	-	-	-	-

This report has been reviewed by the active Indigenous Monitor(s)

CONTACT US:

Trans Mountain
 info@transmountain.com
 1.866.514.6700
 transmountain.com

  @TransMtn

 youtube.com/transmtn



 PO Box 81018
 Burnaby, BC V5H 3B0

