

INDIGENOUS MONITOR OVERVIEW REPORT

Month: November 2019

Indigenous Monitor days on-site: 24

Project Region: Lower Mainland

Kilometer Posts (KPs) monitored: n/a

Indigenous Monitors on the Trans Mountain Expansion Project – Overview

As part of its Compliance Management Plan, the Trans Mountain Expansion Project (the Project) has retained Indigenous Monitors as integrated members of its construction Environmental Inspection team. Indigenous Monitors work with Environmental Inspectors to monitor compliance with mitigation measures in order to minimize impacts to traditional resource use and cultural/heritage impacts during construction. Indigenous Monitors have a strategic role in providing traditional knowledge directly and pragmatically to construction oversight practices and bring an Indigenous lens to daily environmental inspection activities.

This Overview Report provides highlights of the Indigenous Monitors' day-to-day work and key mitigation measures observed by the Monitors related to Project construction in the Lower Mainland. The purpose of this report is to provide an update on Indigenous Monitor activity to Indigenous groups.

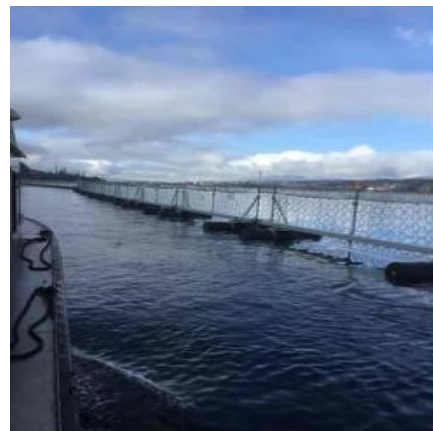
During this reporting period, key Project activities in the Lower Mainland region involving Indigenous Monitors included inspection and monitoring activities at Westridge Marine Terminal and the Commissioner Street stockyard pile. Inspection and monitoring activities at Westridge Marine Terminal included marine wildlife safety protection measures and marine offshore impact pile driving.

For more information: email info@transmountain.com or call 1.866.514.6700

Marine Wildlife Safety Protection Measures

In order to protect workers and marine waterway users in the area, the work area for Westridge is defined by a floating construction safety boom which is marked with the appropriate navigation lighting and controls within a defined construction safety zone within the Burrard Inlet. The construction safety boom uses wire as an access control and security measure.

Bird deterrents in the form of shiny stainless-steel tags/flashers that spin in the wind and flash in the sun were installed on the safety boom as mitigation during early stages of construction. The bird deterrents were an improved mitigation in response to an inquiry by an



Marine construction safety boom

Marine Wildlife Safety Protection Measures (cont'd)

Indigenous Monitor during early stages of construction.

The Indigenous Monitor continues to be involved in the inspection of the marine construction safety boom to ensure the bird deterrents are working optimally. The Indigenous Monitor was involved in the transport of an injured gull to the Wildlife Rescue Association. For further information, please see the Canadian Energy Regulator (CER) Condition 106 Construction Progress Report, November 2019 ([link here](#)).

Temporary Site Inspection

Along the Project route, there are a number of temporary infrastructure sites used as storage areas for construction material and equipment. The Westridge Marine Terminal and Spread 7 have a stockpile yard at Commissioner Street.

The Indigenous Monitor participated in routine environmental inspections at the Commissioner Street temporary site.

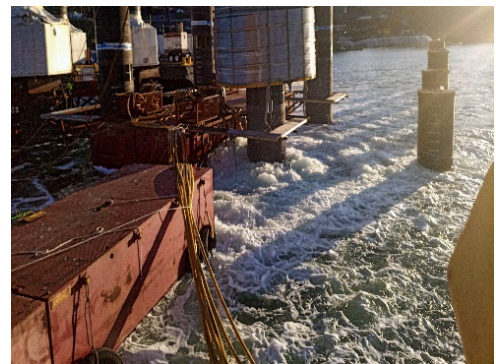


Commissioner Street temporary site

Marine Offshore Impact Pile Driving

The Indigenous Monitor has been actively involved in the inspection of marine offshore impact pile driving. During this activity, monitoring and inspection are focused on the placement and operation of the bubble curtain, the deployment of the noise shroud, as well as underwater noise and marine mammal monitoring.

To enhance fish protection in response to an environmental issue, the Environmental Inspector and Indigenous Monitor have been working closely with the Construction Contractor on an enhanced mitigation plan related to marine pile driving. The enhanced mitigation involves a revised ramp-up procedure, which involves starting with less frequent hammer strikes at lower energy. The revised ramp-up procedure allows more time for fish to move away from the noise source before full peak underwater noise levels are reached.



Offshore impact pile driving with bubble curtain operating

Marine Offshore Impact Pile Driving (cont'd)

For further information, please see the Canadian Energy Regulator Condition 106 Construction Progress Report, November 2019 ([link here](#)).

The Indigenous Monitor continues to be on-site to monitor the pile driving and associated mitigation.

Indigenous Monitor Request Dashboard

Indigenous Monitors are provided daily on-site field support from Environmental Inspectors and office support from Indigenous Monitor Coordinators. Indigenous Monitors can also make specific support requests or submit questions through their daily report. Examples include, however are not limited to: request for Project reports, input from an environmental resource specialist or on-site support from an elder or other cultural knowledge holder. Monthly requests and their completion status are noted below.

Status	Number and Type of Requests				
	Project Reports/ Documents	Environmental Resource Specialists	Elder / Cultural Knowledge Holder	Other	Total
Total	0	0	0	0	0
<i>Fulfilled</i>	-	-	-	-	-
<i>Outstanding</i>	-	-	-	-	-

This report has been reviewed by the active Indigenous Monitor(s)

CONTACT US:

Trans Mountain Expansion Project

✉ info@transmountain.com

☎ 1.866.514.6700

🌐 transmountain.com

🐦 @TransMtn

📺 youtube.com/transmtm

🎵 soundcloud.com/transmountain

📍 6025 Sussex Street
PO Box 81018, South Burnaby
Burnaby, BC, V5H 3B0 CANADA