

## INDIGENOUS MONITOR OVERVIEW REPORT

---

**Month: February 2021**

**Indigenous Monitor days on-site: 18**

**Project Region: Lower Mainland**

**Kilometre Posts (KPs) monitored: n/a**

### **Indigenous Monitors on the Trans Mountain Expansion Project – Overview**

The Trans Mountain Expansion Project (the Project) has retained Indigenous Monitors as integrated members of its construction Environmental Inspection team. Indigenous Monitors work with Environmental Inspectors to monitor compliance with mitigation measures to minimize impacts to traditional resource use and cultural/heritage impacts during construction. Indigenous Monitors have a strategic role in providing traditional knowledge directly and pragmatically to construction oversight practices and bring an Indigenous lens to daily environmental inspection activities.

This Overview Report provides highlights of the Indigenous Monitors' day-to-day work and key mitigation measures observed by the Monitors related to Project construction in the Lower Mainland. The purpose of this report is to provide an update on Indigenous Monitor activity to Indigenous groups.

During this reporting period, key Project activities in the Lower Mainland region involving Indigenous Monitors included construction at Westridge Marine Terminal (WMT), Burnaby Terminal and Sumas Terminal. Activities included right-of-way clearing, heritage resource surveying, wildlife management, erosion and sediment control and water management, and construction housekeeping. The Project Construction Progress Report (Condition 106) for February 2021, which reports environmental events and deficiencies in Tables 4 and 5 respectively, is found [here](#).

**For more information: email [info@transmountain.com](mailto:info@transmountain.com) or call 1.866.514.6700.**

### **Trans Mountain COVID-19 – Our Response**

Trans Mountain is actively monitoring the COVID-19 situation with the help of federal, provincial and local agencies. Trans Mountain's top priority remains the health and safety of our workforce, their families and our communities. Trans Mountain and its construction contractors are working diligently together to adhere to all advice and direction from government and health officials, while ensuring the safe uninterrupted operation of the Trans Mountain Pipeline and the continued, safe construction of the Expansion Project. Measures being undertaken at construction sites include: temperature screening; following physical distancing guidelines; staggering work shifts and breaks; eliminating or minimizing in-person meetings; enhancing cleaning and sanitizing; and ensuring workers orientation includes COVID 19 expectations, awareness and prevention.

**For more information: [transmountain.com/covid19](https://transmountain.com/covid19)**

## Right-of-Way Clearing Activities

Clearing on the Project right-of-way is a part of early construction activity and involves the removal of trees and vegetation from along the pipeline footprint. In February, prior to clearing activities commencing in the Construction Work Package (CWP) 98 area (KP 1174 to 1175), the Indigenous Monitors from all Lower Mainland sites conducted a walkthrough of the land. They assessed the area for any previously unidentified TLU sites, including Culturally Modified Trees (CMTs).

During the walkthrough of the CWP 98 area by the Indigenous Monitors, no CMTs or other TLU sites were identified.

Prior to removal of any trees in the CWP 98 area, the Indigenous Monitor working on Spread 7 participated in meetings with the Trans Mountain tree clearing contractor. Clearing plans were discussed, which included approved tree falling procedures near waterways as well as equipment re-fueling environmental requirements. Prior to any clearing, the Indigenous Monitor also observed that the flagging and staking of environmental features were installed effectively in the area.



Walkthrough of CWP 98 conducted by the Indigenous Monitors.

## Wildlife Observation and Management

The Indigenous Monitors record and report to the Environmental Inspector wildlife sightings while conducting site monitoring. They also participate in discussions with the Environmental Inspection team relating to wildlife protection strategies and monitor and inspect that mitigation measures are effectively in place.

In February the Indigenous Monitor at WMT observed a survey for otter dens conducted by a Trans Mountain resource specialist at the foreshore east outfall area. No otter dens were found within the construction area.

At Sumas Terminal, the Indigenous Monitor observed a vole salvage conducted by the



Voiles salvaged at Sumas Terminal that were relocated to natural habitat.

Trans Mountain resource specialist. The team found seven voles and relocated them to habitat outside the Project footprint.

### Erosion and Sediment Control

Erosion and sediment control (ESC) measures at all Lower Mainland sites are inspected by the Indigenous Monitors to ensure they function as intended to mitigate erosion and sediment transport from construction sites to downstream areas, including watercourses and the marine environment. On-site ESC mitigations monitored and inspected in February include sediment fences, polyethylene sheeting, straw waddles and check dams.

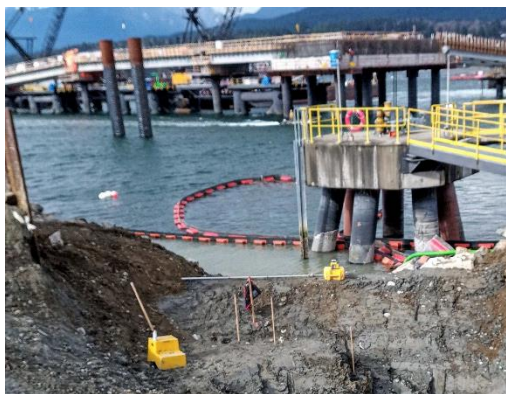
At Burnaby Terminal, the Indigenous Monitor observed polyethylene sheeting that had been partially removed from a berm due to strong winds. They reported the deficiency to the Project team and the polyethylene sheeting was fixed by the contractor.

At Burnaby Terminal the Indigenous Monitor observed the Trans Mountain resource specialist check and record the water flowrate at the Eagle Creek and Silver Creek tributary outlets. The Indigenous Monitor also inspected the diversions pumps at both Eagle Creek and Silver Creek to ensure they were functioning as intended and diverting water away from the Burnaby Terminal construction zones and into the designated area.

During construction activities at the WMT east outfall manhole 24, the Indigenous Monitor observed the effectiveness of the turbidity curtain installed in the surrounding marine area. Although turbidity (i.e., water containing suspended sediment generated by wavy conditions, rainfall or construction activities) was observed, it was effectively contained inside the turbidity curtain. The Indigenous Monitor continued the observations as excavation continued to ensure turbidity was not released into the marine environment.



Trans Mountain resource specialist checking water flowrate at Eagle Creek at Burnaby Terminal.



Turbidity curtain at the WMT east outfall manhole 24.

Turbidity curtains are installed in various areas at the WMT shoreline. They are an important environmental protection mitigation, which is implemented year-round, and monitored and inspected regularly for integrity and effectiveness.

### Construction Site Housekeeping

The Indigenous Monitors conduct inspections of the various construction areas for general housekeeping measures. This includes observing and documenting garbage and recycling disposal, scrap metal management, waste storage and fuel storage. They also monitor for proper use of vehicle and equipment drip trays and display of correct signage on garbage and recycling receptacles. At WMT, the Indigenous Monitor identified improper labelling on a garbage bin and a grout waste receptacle that had collected rainwater. The site contractor was notified and the deficiencies resolved.



Spill kits effectively labelled and positioned at CWP 98.

## Indigenous Monitor Request Dashboard

Indigenous Monitors are provided daily on-site field support from Environmental Inspectors and office support from Indigenous Monitor Coordinators. Indigenous Monitors can also make specific support requests or submit questions through their daily report. Examples include but are not limited to: request for Project reports, input from an environmental resource specialist or on-site support from an Elder or other cultural knowledge holder. Monthly requests and their completion status are noted below.

Status	Rolling Total and Type of Requests				
	Project Reports/ Documents	Environmental Resource Specialists	Elder/Cultural Knowledge Holder	Other	Total
Total	1	0	0	0	1
Fulfilled	1	-	-	-	1
Outstanding	0	-	-	-	0

This report has been reviewed by the active Indigenous Monitor(s)

#### CONTACT US:

Trans Mountain

info@transmountain.com

1.866.514.6700

transmountain.com

@TransMtn

youtube.com/transmtn

in

PO Box 81018  
Burnaby, BC V5H 3B0

