

INDIGENOUS MONITOR OVERVIEW REPORT

Month: March 2021

**Indigenous Monitor days on-site:
24**

Project Region: Lower Mainland

**Kilometre Posts (KPs) monitored:
Spread 7 KP 1167.8 to 1174.9**

Indigenous Monitors on the Trans Mountain Expansion Project – Overview

The Trans Mountain Expansion Project (the Project) has retained Indigenous Monitors as integrated members of its construction Environmental Inspection team. Indigenous Monitors work with Environmental Inspectors to monitor compliance with mitigation measures to minimize impacts to traditional resource use and cultural/heritage impacts during construction. Indigenous Monitors have a strategic role in providing traditional knowledge directly and pragmatically to construction oversight practices and bring an Indigenous lens to daily environmental inspection activities.

This Overview Report provides highlights of the Indigenous Monitors' day-to-day work and key mitigation measures observed by the Monitors related to Project construction in the Lower Mainland. The purpose of this report is to provide an update on Indigenous Monitor activity to Indigenous groups.

During this reporting period, key Project activities in the Lower Mainland region involving Indigenous Monitors included construction at Westridge Marine Terminal (WMT), Burnaby Terminal, Sumas Terminal and on Spread 7. Activities included right-of-way clearing, wildlife observation and management, biosecurity, construction housekeeping and participation in regulator meetings. The Project Construction Progress Report (Condition 106) for March 2021, which reports environmental events and deficiencies in Tables 4 and 5 respectively, is found [here](#).

For more information: email info@transmountain.com or call 1.866.514.6700.

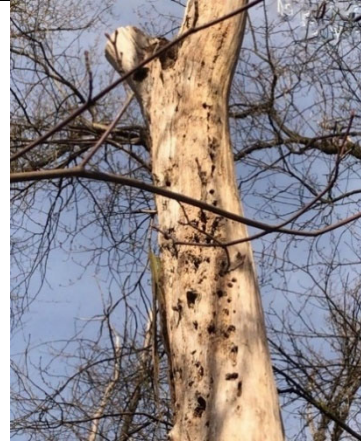
Trans Mountain COVID-19 – Our Response

Trans Mountain is actively monitoring the COVID-19 situation with the help of federal, provincial and local agencies. Trans Mountain's top priority remains the health and safety of our workforce, their families and our communities. Trans Mountain and its construction contractors are working diligently together to adhere to all advice and direction from government and health officials, while ensuring the safe uninterrupted operation of the Trans Mountain Pipeline and the continued, safe construction of the Expansion Project. Measures being undertaken at construction sites include: temperature screening; following physical distancing guidelines; staggering work shifts and breaks; eliminating or minimizing in-person meetings; enhancing cleaning and sanitizing; and ensuring workers orientation includes COVID 19 expectations, awareness and prevention.

For more information: transmountain.com/covid19

Right-of-Way Clearing Activities

Clearing on the Project right-of-way is a part of early construction activity and involves the removal of trees and vegetation from along the pipeline footprint. Prior to any clearing of trees in the CWP 98 area, the Trans Mountain Resource Specialist conducted wildlife sweeps. In March, sweeps focused on Painted Turtles and raptors, however, all wildlife including amphibians, mammals and birds are observed and documented. No turtles nor raptors were found during the sweeps. In March, the team began sweeping for migratory bird nests as well. The Indigenous Monitor observed this activity as well as the identification of a wildlife tree and the installation of the protected exclusion zone.



Wildlife tree in the CWP 98 area that will be protected and not cleared.

Wildlife Observation and Management

While conducting site monitoring in the Lower Mainland, the Indigenous Monitors record and report wildlife sightings to the Environmental Inspector. They also participate in discussions with the Environmental Inspection team relating to wildlife protection strategies and monitor and inspect that mitigation measures are effectively in place.

In March, the Indigenous Monitors observed the Trans Mountain Wildlife Resource Specialist conduct a variety of wildlife sweeps and salvages on the various Lower Mainland sites. These included an Oregon Snail salvage on CWP 62, amphibian salvages at Sumas Terminal and CWP 62, and multiple migratory bird sweeps at Burnaby Terminal, Sumas Terminal, CWP 98 and CWP 62.

When clearing and construction activities occur within the migratory bird nesting window (April to August), a Trans Mountain Wildlife Resource Specialist will conduct area searches prior and during to clearing and construction activities to identify active nests along the Project Footprint.

The Indigenous Monitors observed various migratory bird sweeps in March and when nests were identified, the Trans Mountain resource specialist and Environmental Inspector installed mitigation measures to protect the areas and nest sites. On CWP 62, an active wren's nest was identified with a possible second nest within 10 metres. The area was ribboned off, marked as a machine-free zone, and continues to be monitored daily for nesting activity. Garter snakes were also spotted near the road on CWP 62 and signage was installed to warn crews of snake activity. Bird sweeps will



Stake and ribbon marking off the area where the wren's nest was identified.



Wildlife advisory signage on CWP 62.

continue at the Lower Mainland sites throughout the bird nesting season.

In March, an injured racoon was spotted on CWP 62. The Environmental Inspector was notified and a wildlife control fencing buffer zone was installed around the animal. The Indigenous Monitor observed the racoon until the wildlife rescue technicians arrived to remove the animal for evaluation and treatment at their facility.

Biosecurity/Invasive Weed Management

Biosecurity measures are designed to reduce the introduction or spread of noxious weeds and soil pathogens from construction activities. Mitigations at construction areas include cleaning stations to manage the risks associated with invasive, noxious and prohibited noxious weeds as well as regular inspections of equipment and vehicles. At Sumas Terminal, biosecurity measures also include the careful removal of Japanese Knotweed from the new manifold pad area. The Indigenous Monitor observed the removal of the Knotweed from the designated area. The removed Knotweed is classified as infested weed material, contained and hauled off-site to an approved Trans Mountain facility.

The Indigenous Monitor also identified Knotweed soil on the adjacent road and reported it to the Environmental Inspector. The contractor was notified and the soil cleared to reduce potential biosecurity hazards.



Area at Sumas Terminal where Knotweed was removed.


Erosion and Sediment Control

Erosion and sediment control (ESC) measures at all Lower Mainland sites are inspected by the Indigenous Monitors to ensure they function as intended to mitigate erosion and sediment transport from construction sites to downstream areas, including watercourses and the marine environment. On-site ESC mitigations monitored and inspected in March include sediment fences, polyethylene sheeting, straw waddles and check dams.

At Burnaby Terminal, the Indigenous Monitor observed the Trans Mountain resource specialist check and record the water flowrate and sample water at the Eagle Creek and Silver Creek tributary outlets. The Indigenous Monitor inspected the diversions pumps at both Eagle Creek and Silver Creek to ensure they were functioning as intended and diverting water away from the Burnaby Terminal construction zones and into the designated area. They also observed that silt fencing and sandbags were needed at Eagle Creek to



Trans Mountain resource specialist sampling water in Eagle Creek at Burnaby Terminal.

<p>divert construction contact water from entering the watercourse. The Environmental Inspector notified the contractor to add these required ESC measures.</p>	
<p>Construction Site Housekeeping</p> <p>The Indigenous Monitors conduct inspections at various construction areas for general housekeeping measures. This includes observing and documenting garbage and recycling disposal, scrap metal management, waste storage and secondary containment of fuel and other hydrocarbons. Secondary containment measures include, but are not limited to, drip trays under inactive vehicles and equipment and drip trays placed under hydrocarbons like gasoline and paint aerosol spray cans. Indigenous Monitors also inspect food waste containers to make sure they are wildlife proof throughout the site. Limiting human and wildlife interactions is a key mitigation measure in the Environmental Protection Plan.</p>	 <p>Example of good site housekeeping on Spread 7..</p>
<p>Regulator Meetings</p> <p>In March, the Indigenous Monitors attended an online gathering hosted by the IAMC. The engagement was an online workshop organized to create opportunities for interaction between IAMC and TMEP IMs outside of in-field activities. This workshop provided an opportunity for IMs from both programs to gain an understanding of both the IAMC and TMEP Indigenous Monitoring Programs and create two-way dialogue for IMs from both programs to get to know each other and the work-they do.</p>	

Indigenous Monitor Request Dashboard


Indigenous Monitors are provided daily on-site field support from Environmental Inspectors and office support from Indigenous Monitor Coordinators. Indigenous Monitors can also make specific support requests or submit questions through their daily report. Examples include but are not limited to: request for Project reports, input from an environmental resource specialist or on-site support from an Elder or other cultural knowledge holder. Monthly requests and their completion status are noted below.

Status	Rolling Total and Type of Requests				
	Project Reports/ Documents	Environmental Resource Specialists	Elder/Cultural Knowledge Holder	Other	Total
Total	1	0	0	0	1
Fulfilled	1	-	-	-	1
Outstanding	0	-	-	-	0

This report has been reviewed by the active Indigenous Monitor(s)

CONTACT US: Trans Mountain

✉ info@transmountain.com
☎ 1.866.514.6700
💻 transmountain.com

  @TransMtn
  youtube.com/transmtn
 

 PO Box 81018
Burnaby, BC V5H 3B0

