

Updated  
2024

# Living and Working Near Pipelines



What You Need To Know

Damage prevention is a shared responsibility.



TRANSMOUNTAIN

# Important Safety Information

Preventing damage to underground infrastructure is a shared responsibility among pipeline companies and all stakeholders, including contractors, excavators, landowners and the public.

Before you start digging or building, you need to know who to contact, what permissions you need and what to do if something goes wrong. This important information is provided in the brochure.

For more information about pipeline safety, please visit our website:

[transmountain.com/pipeline-safety](https://transmountain.com/pipeline-safety)

# Pipeline Safety



Trans Mountain  
Right-of-Way

**Pipelines are the safest and most efficient way to transport petroleum to market.**

**At Trans Mountain, pipeline safety is our number one priority.**

We have developed programs that maximize pipeline safety and focus on protecting the public, the environment and our employees. These comprehensive programs include corrosion protection, 24/7 monitoring from our control center, inline inspections, leak detection, right-of-way patrols and emergency response plans. We continue to enhance our safety programs every day. We work with Indigenous communities, landowners, contractors, emergency responders, elected government officials and government employees to make sure our pipeline and facilities continue to operate safely – and, if there's an emergency, we are ready to respond rapidly and effectively. More information can be found at [transmountain.com/pipeline-safety](https://transmountain.com/pipeline-safety).

# Understanding the Pipeline Right-of-Way

A pipeline follows a linear corridor of land called a right-of-way,

which is kept free of tall vegetation and permanent structures to allow our employees and contractors to access our pipeline for inspections, maintenance and emergencies.

Markers are used to indicate the approximate location of the pipeline as well as important information, including the type of product carried, the 811 One Call number and Trans Mountain's 24-hour emergency Line.

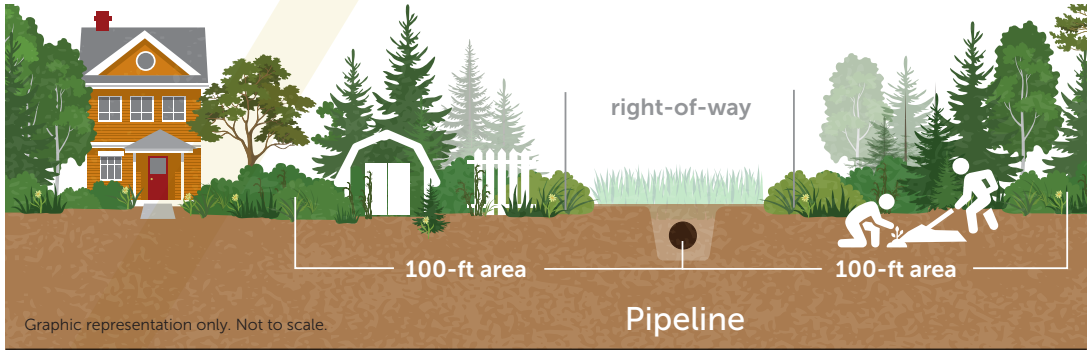
To ensure the safety of the pipeline, community and the environment, for works within 100 feet of the pipeline centerline, Trans Mountain will issue a permit acknowledging the proposed work.

Call 811 or visit [digsafewa.com](http://digsafewa.com) to request the location of underground utilities in the area at least two business days prior to beginning any ground disturbance activity.



NOTE: Pipeline markers do not indicate the exact location of the pipe.

## Pipeline Right-of-Way and 100-Foot Area



All work within the 100-foot area must be verified by a Trans Mountain inspector and requires a 100-foot permit.

# Vehicle and Motorized Equipment Crossings

Crossing the pipeline right-of-way with a vehicle or heavy equipment outside a designated roadway can pose a threat to our pipelines.

To ensure the integrity of our pipelines, Trans Mountain will conduct a safety assessment for vehicles and mobile equipment crossings.

Contact 811 to begin the process for a safety assessment a minimum of two business days before any proposed crossing.

For detailed information about permitting, visit: [transmountain.com/permits](https://transmountain.com/permits)



Before you begin any ground disturbance work, even on your own property, call 811 or visit [digsafewa.com](https://digsafewa.com) to request the location of utilities in the area. Follow these steps:

1.



2.

Complete a free One Call notification.

3.

If your planned activity is near our pipeline, a Trans Mountain representative will contact you within two business days to discuss next steps and if required, arrange a site visit to mark the pipeline.

811 will require information, such as the planned start date of ground disturbance, an overview of your plans, how deep you'll be disturbing the ground, location of work and the duration. The details provided to 811 will be incorporated into a 100-foot permit issued for your proposed work, should a permit be required. If the job scope changes, stop work and place a new 811 call with an updated job scope.



**Any approved work undertaken within 25 feet of the pipe requires one of our Pipeline Protection Inspectors to be on-site to ensure the safety of our pipelines. Our inspectors have the authority to stop any work that may pose an imminent danger to the pipeline.**



# Trans Mountain Permits

## Work within the 100-foot area

To ensure the safety of the public, property and the environment,

Trans Mountain will conduct a safety assessment for any ground disturbance activity within the 100-foot area and, if required, will issue a **Trans Mountain 100-Foot Permit**.

Ground disturbance includes any activity either below or at ground level that disturbs or displaces the existing soil or

ground cover and may require a **Pipeline Proximity (Crossing) Installation Permit** or “Proximity Permit.” These activities include but are not limited to:

- Excavating, digging or trenching
- Driving objects into the ground such as posts or stakes
- Installing irrigation systems or ditching
- Landscaping
- Drilling, digging, compacting or stockpiling material
- Short-term vehicle crossings outside the traveled portion of a highway or public road
- Using explosives or any equipment causing ground vibration

While permanent above-ground structures, such as buildings or poles, are not allowed within the right-of-way area, certain improvements, like underground utilities, roads, trails and driveways can be installed in accordance with our safety requirements.

## Design Information Request

If you are considering any improvements within the right-of-way that may require a longer lead time, we recommend you contact 811 or visit [digsafewa.com](https://digsafewa.com) and place a Design Information Request in advance to ensure your works meet pipeline safety requirements. We will work with you and provide feedback as you plan, and determine if a Proximity Permit is required.

A Design Information Request can then be converted into a Design Locate Request to obtain actual marks in the field.



**Proximity Permits** are typically required for installations or crossings within the right-of-way.

It is a continuation of the process, which starts with contacting 811 and requesting information about the location of underground infrastructure.

You may be required to provide site and elevation drawings with your Proximity Permit application. Provided the application is complete, it will take up to 10 business days to be processed and a Proximity Permit issued.



[transmountain.com/permits](https://transmountain.com/permits)

# Agricultural Activities

Includes any work of producing crops and raising animals and includes plowing, disking, harrowing and pasturing. It does not include the construction of new buildings or impervious areas or the placement of footings, foundations, pilings or posts, including fence posts.

Farming or deep tillage at a depth of 12 inches or greater can be a threat to the safety of the pipeline as well as you, your livestock, the public and the environment. If any deep tillage is planned, please notify us by contacting 811.

**Normal agricultural activity, at a depth less than 12 inches, is permitted on the right-of-way.**

Right-of-Way

# Activities Not Permitted on the right-of-way



**For everyone's safety, we don't allow certain activities on the right-of-way. These include but are not limited to:**



- Parking vehicles or RVs on the right-of-way
- Constructing buildings, foundation walls, decks or sheds



- Installing any type of swimming pools or hot tubs
- Using explosives



- Burning waste material



- Storing flammable materials, equipment or bulk goods
- Growing or planting large vegetation or trees – for more information about landscaping near our pipeline, please visit our website at [transmountain.com/landscaping-guidelines](http://transmountain.com/landscaping-guidelines)



**The mature growth of vegetation on the right-of-way must not exceed three feet within 10 feet of the pipeline and six feet on remaining portions of the right-of-way.**

# Working Safely

Near the pipeline



Trans Mountain's requirements for ground disturbance activity within 100 feet of the pipeline:

- A Trans Mountain representative must be on-site for any work within 25 feet from the center of the pipe
- Power-operated equipment is allowed, with prior approval, within 16.5 feet from the center of the pipe only after the pipeline has been hand exposed in the presence of a Trans Mountain representative
- Hydrovac is an acceptable alternative to hand digging
- Any work within two feet from the edge of the pipe must be done by hydrovac or hand shovel
- No ground disturbance – including mechanical excavation – directly overtop or underneath the pipeline

# Trans Mountain's Obligations

After receiving an 811 notification for your project, Trans Mountain will:

- Respond within two business days
- Confirm the proposed works outlined within the notification, location and timing
- Schedule an appointment to meet with you on-site to mark the pipeline, issue a Trans Mountain 100-Foot Permit and discuss next steps as required
- Conduct a safety meeting to explain the ground disturbance regulations and requirements
- Stay on-site for any work within 25 feet of our pipeline, including backfill



# Ground Disturber's Responsibilities

Before you begin any ground disturbance work, it's your responsibility to ensure the following actions are taken:

- Notify us of your activity by contacting 811
- Attend our on-site safety meeting
- Be on-site when the pipeline is marked and understand what the markings mean
- Ensure any new workers are informed of the requirements
- Provide a minimum of two business days advance notice to Trans Mountain prior to starting work within 25 feet to schedule an inspector to be on-site
- Follow the instructions provided by Trans Mountain
- Ensure that any work within two feet from the edge of the pipe is done by hydrovac or hand shovel
- If your project scope changes or your permit expires, please contact 811 identifying the changes or renewing the ticket. Permit approvals are based on the scope of work outlined in the original 811 ticket.
- Always have valid permits on-site



# ⚠️ If You Come in Contact with the Pipeline

No matter how minor the damage may appear, if you come in contact with the pipeline, you must immediately contact our 24-hour emergency line at: **1.888.876.6711**



## NEVER COVER IT UP!

Even slight damage – a gouge, a dent, a scrape – can impact the structural integrity of the pipeline. Never attempt to repair it yourself.

It takes a qualified Trans Mountain technician to inspect and repair any damage.

In the case of an emergency excavation, notify 811 to request an emergency locate.

## Consequences for Not Contacting 811

Those who live or work near pipelines are responsible for ensuring safe ground disturbance by contacting 811, which will confirm whether you need our permission to complete your work.

Failure to notify us in advance through 811, obtain necessary permits or follow the instructions of our Pipeline Protection Inspectors may be subject to monetary penalties as per applicable regulations.

Unauthorized activities may cause property damage and negatively impact public safety and the environment.

# Potential Hazards

Although rare, pipeline spills require immediate action and caution.

There are potential hazards associated with an unintended release from the pipeline.

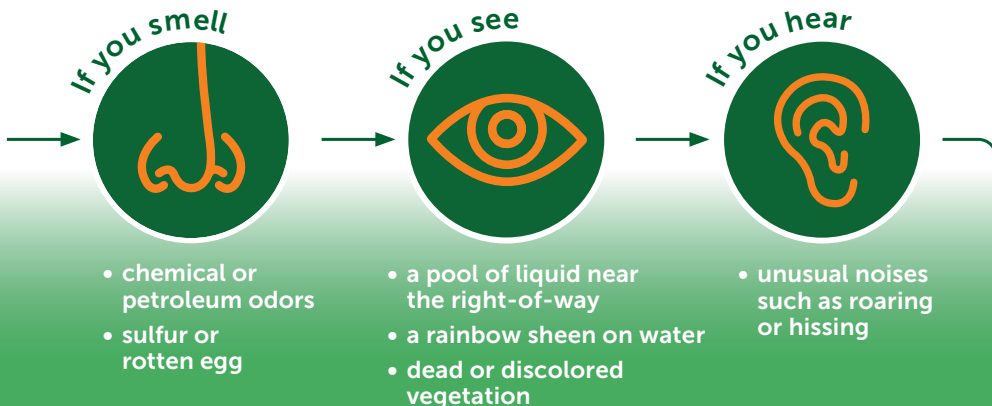
Products may be flammable and explosive under certain conditions, and inhalation of vapors may cause irritation to the upper respiratory tract.

For more information about hazards, visit:

[transmountain.com/pipeline-safety](https://transmountain.com/pipeline-safety)

**The most critical and responsible emergency management strategy is incident prevention.** However, should an incident occur, Trans Mountain is ready to respond promptly with detailed emergency procedures, response equipment and trained personnel, as part of its comprehensive Emergency Management Program.

# Recognize a Pipeline Emergency



## **LEAVE AREA immediately on foot** crosswind, then upwind

- Abandon any mechanized equipment being used in or near the area
- Call Trans Mountain's 24-hour emergency line 1.888.876.6711
- Warn others to stay away
- Eliminate ignition sources (keyless door entry, cell phone or flashlight)
- Turn off vehicle engines

## **DO NOT re-enter the area**

- Do not ring door bells or metal knockers; knock with your hand to avoid sparks
- Do not start your vehicle or drive into the release location or vapor clouds while leaving the area
- Do not operate pipeline valves
- Do not touch any liquid or vapor
- Do not try to extinguish any fires associated with the release; wait for trained professionals



# Public Safety



If an emergency occurs, we will ensure all affected stakeholders are notified promptly and work with local first responders to secure public protection.

The most common pipeline emergency responses are shelter-in-place or evacuation. The best action to take is based on factors such as emergency



location, potential exposure during evacuation, anticipated emergency duration and advice from emergency responders and/or Trans Mountain.

## REPORTING Petroleum Odors

If you are near our facility, you may occasionally smell petroleum, which can come from normal operations or routine maintenance.



Odors can also indicate a pipeline emergency. Any potential emergency, including odors, should be reported to our

24-hour emergency line: **1.888.876.6711**

Learn more about our robust program:  
[transmountain.com/emergency-management](https://transmountain.com/emergency-management)

# About Trans Mountain

Since 1954, we have delivered safe and reliable energy transportation throughout communities in Puget Sound.

We deliver approximately 890,000 barrels of petroleum products each day through 715 miles of pipeline in Alberta and British Columbia, and 69 miles of pipeline in Washington state.



National Pipeline Mapping System (NPMS) is an online database containing the locations and information on pipelines regulated by the Pipeline and Hazardous Materials Safety Administration (PHMSA). This database is used for emergency response, pipeline inspections, regulatory management, compliance and analysis purposes. It is also used by government officials, pipeline operators and the general public for emergency response planning, smart growth planning, critical infrastructure protection and environmental protection. To access NPMS, please visit [npms.phmsa.dot.gov](https://npms.phmsa.dot.gov).





Call 811 or Click  
Before You Dig

[digsafewa.com](http://digsafewa.com)



**Pipeline Emergency?**  
Call 911 and  
**1.888.876.6711**

## Damage Prevention is a Shared Responsibility.

Laurel Station: 360.398.1541

[info@transmountain.com](mailto:info@transmountain.com)

Trans Mountain Permit Technicians

- Washington state:  
[permits\\_bc@transmountain.com](mailto:permits_bc@transmountain.com)

[transmountain.com](http://transmountain.com)



Trans Mountain Puget Sound Pipeline is regulated by the US Department of Transportation Pipeline and Hazardous Materials Safety Administration. Any individual or organization working near our pipelines or facilities must adhere to all applicable regulations. For more information, visit [phmsa.dot.gov](http://phmsa.dot.gov).