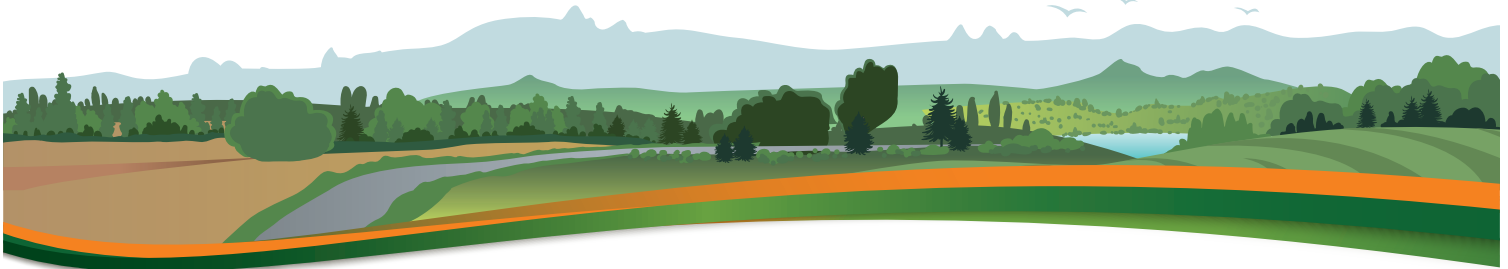




**TRANSMOUNTAIN**

# Landscaping Guidelines

March 2024



## This handout contains important safety information about landscaping over or near the Trans Mountain Pipeline.

Although landscaping activities, such as flower beds, ornamental lawns and low shrubbery are generally permitted on the right-of-way, most landscaping is considered a ground disturbance activity and requires a safety assessment to be completed by Trans Mountain.

**Involve us early in your planning process** so we can work with you on a landscaping solution that fits your needs and protects the integrity of the pipeline.



### Permits

All landscaping activity involving ground disturbance within 30 metres (100 feet) from the centre of the pipe requires a Trans Mountain 30-Metre (100-Foot) Ground Disturbance Permit issued by Trans Mountain. The permit is completed on-site by a Trans Mountain representative before landscaping begins.

If your proposed project requires installing anything of permanent nature within the pipeline right-of-way, such as a fence or post, then a Pipeline Proximity (Crossing) Installation Permit (Proximity Permit) will also be required.

Contact your local One Call centre at least three business days in Canada (two business days in Washington state) prior to starting your project.

For more information, visit [transmountain.com/pipeline-safety](http://transmountain.com/pipeline-safety).

### Items permitted on the right-of-way with notification to Trans Mountain:

- Flower beds
- Vegetable gardens
- Lawns

### Items not permitted on the right-of-way:

Trans Mountain needs access to the pipeline for monitoring and maintenance. To ensure your safety and the safety of the public, the pipeline and the environment, the following items are not permitted on the right-of-way:

- Sheds
- Pools
- Hot tubs
- Decks
- Ponds
- Overhangs
- Other permanent structures
- Deep-rooted trees or shrubs

### Items that require a permit:

- Fences
- Ditches and swales
- Retaining walls
- Paved and gravel walkways
- Low and shallow-rooted shrubbery
- Vehicle and equipment crossing of the right-of-way where no established road exists

### Maximum Vegetation Heights on the Right-of-Way

Tall growing vegetation is not permitted within the right-of-way. Trans Mountain conducts regular aerial and/or ground patrols to identify potential dangers. Tree canopies overhanging the right-of-way are not allowed, as they restrict inspection from the air and may limit access to the pipeline for operational purposes.

The mature growth height of vegetation must not exceed one metre (three feet) within three metres (10 feet) of the pipeline and 1.8 metres (six feet) on remaining portions of the right-of-way.

### Growth Areas and Vegetation Compatible with Right-of-Way

#### Low-Growth Area:

- Directly over and within three metres (10 feet) of the pipeline
- The mature plant height restriction is one metre (three feet) high

# Landscaping Guidelines

## Mid-Growth Area:

- Right-of-way areas not within three metres (10 feet) of the pipeline
- The mature plant maximum height restriction is one to 1.8 metres (three to six feet) high

## Tall-Growth Area:

- Outside of and not overhanging the right-of-way



Damage Prevention is a Shared Responsibility

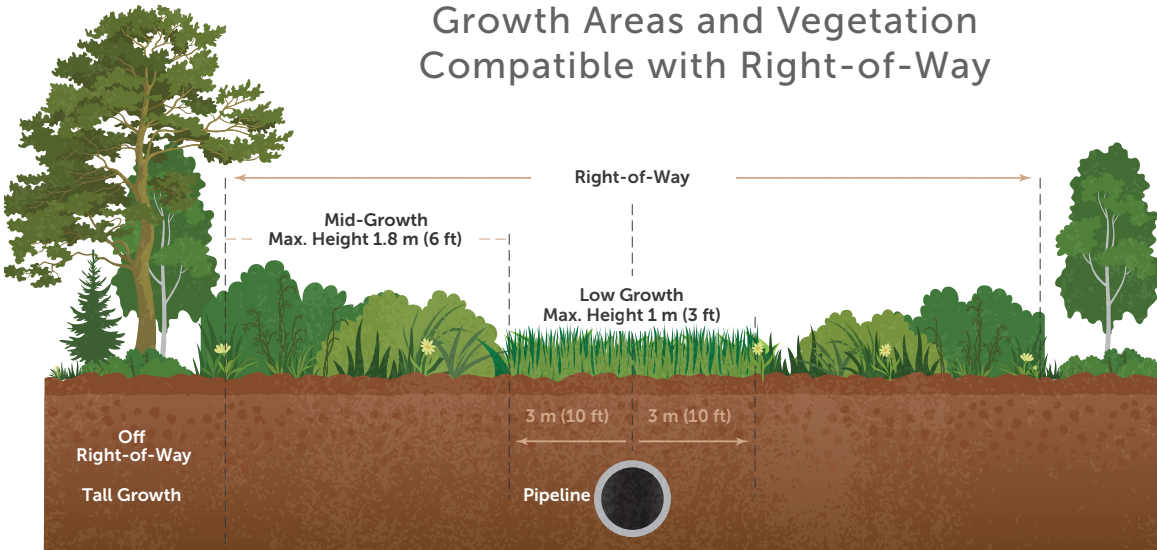
**Click Before You Dig.com**

BC 1 Call  
1.800.474.6886

Utility Safety Partners (Alberta)  
1.800.242.3447

WA state  
Call 811

## Growth Areas and Vegetation Compatible with Right-of-Way



Not to scale. Graphic representation only.



## Fences

If you plan on constructing a new fence or repairing an existing one, you need to contact your local One Call service.

A Trans Mountain representative will be notified by One Call within three business days in Canada (two business days in Washington state) and will conduct a safety assessment and issue required permits.



✉ info@transmountain.com  
☎ 1.866.268.3001  
💻 transmountain.com

In case of a pipeline emergency or to report odours, call 24 hours: 1.888.876.6711