

**Construction related to the Trans Mountain Expansion Project is underway in your region.**

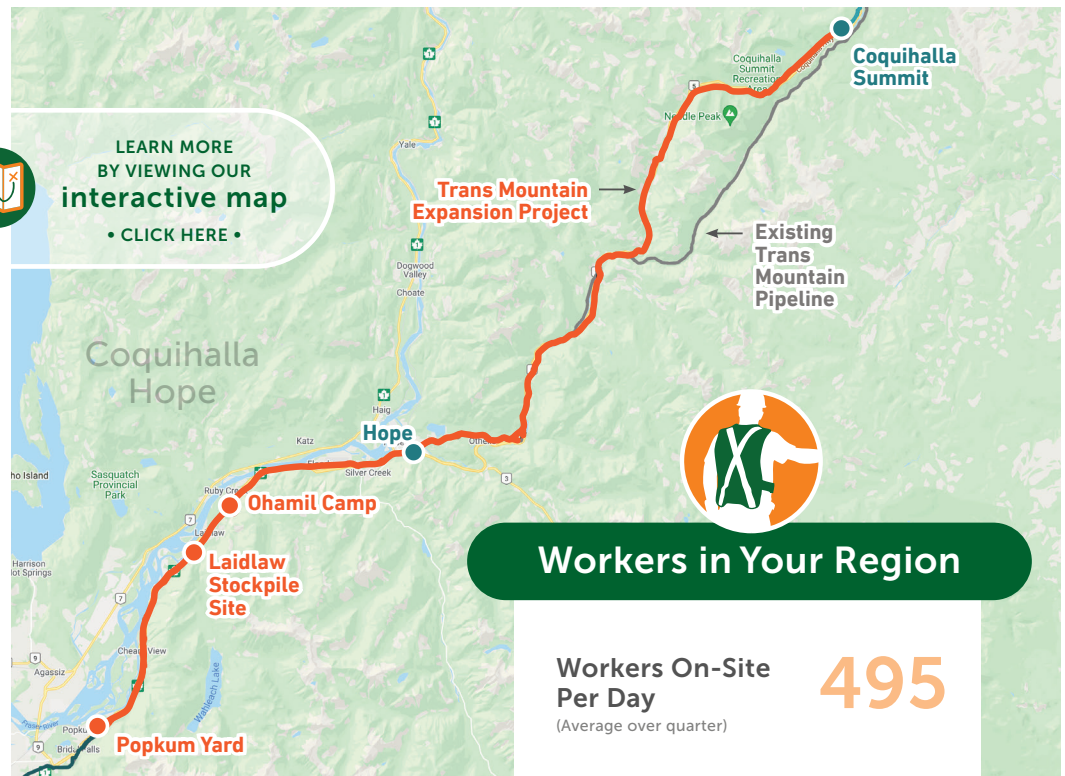
Health and safety for our workers, their families and communities is a top priority while maintaining safe construction activities during COVID-19. Trans Mountain and its Project contractors are adopting government and company health and safety measures to protect its workforce and ensure work can safely continue.

Trans Mountain is monitoring the impact of construction on pipeline communities through a series of indicators identified in the Socio-Economic Effects Monitoring Plan. This Project impact information is gathered for each three-month period in a regional Socio-Economic Monitoring Report. Highlights from the quarterly regional report are provided here.

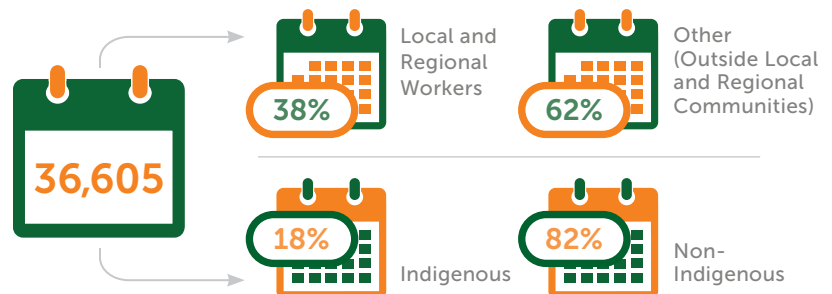
Go to/click here [transmountain.com/socio-economic-reports](https://transmountain.com/socio-economic-reports) to view the complete Socio-Economic Monitoring Report for this region.



LEARN MORE  
BY VIEWING OUR  
**interactive map**  
• CLICK HERE •

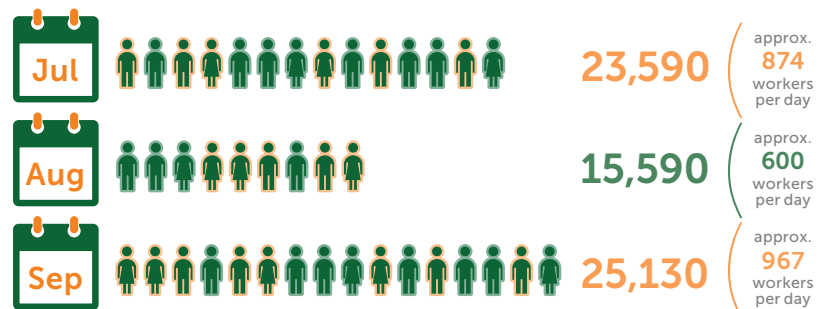


**Three-Month Total of Worker Days On-Site in Reporting Period**



**Anticipated Worker Days On-Site in the Next Reporting Period\***

\*Estimate at end of reporting period; subject to change.



## Worker Accommodation Nights



**10,085**

At Home



**12,715**

Local Accommodation



**15,805**

Camp Community  
(1 camp in this region)

**Total Living Out Allowance Paid to Workers**

**\$2,269,195**



## Worker Health and Medical Services

Number of  
Times Sent to  
Local Health  
Care Facility



Use of  
Ambulance  
or Other Public  
Emergency  
Transport



## Vehicles

Vehicles Parked  
in Staging Area\*  
(Daily Average)

365



\* Personal vehicles. No active TMEP yard/staging area during this period. Vehicles parked in Hope. Vehicle numbers based on average of mid and end of month counts.

Workers Transported from  
Staging Area to Job Site  
(Daily Average)

334



## Construction Inquiries and Topics\*

Trans Mountain is committed to addressing any complaints related to operations and construction.

Total number  
for this Quarter



\* Socio-economic topics related to community impacts only. Data in this report is reflective of activities specific to active construction of the Trans Mountain Expansion Project. Data does not reflect Trans Mountain's ongoing operations and maintenance or inquiries related to future construction activities.

† Inquiries from same individual/household on same topic are considered same inquiry. May be multiple inquiries on similar theme.

### CONTACT US:

Trans Mountain Expansion Project

✉ [info@transmountain.com](mailto:info@transmountain.com)

☎ 1.866.514.6700

🌐 [transmountain.com](http://transmountain.com)

🐦 [@TransMtn](https://twitter.com/TransMtn)

📍 PO Box 81018, Burnaby, BC  
V5H 3B0 CANADA

📺 [youtube.com/transmtn](https://youtube.com/transmtn)



**TRANSMOUNTAIN**