

Construction related to the Trans Mountain Expansion Project is underway in your region.

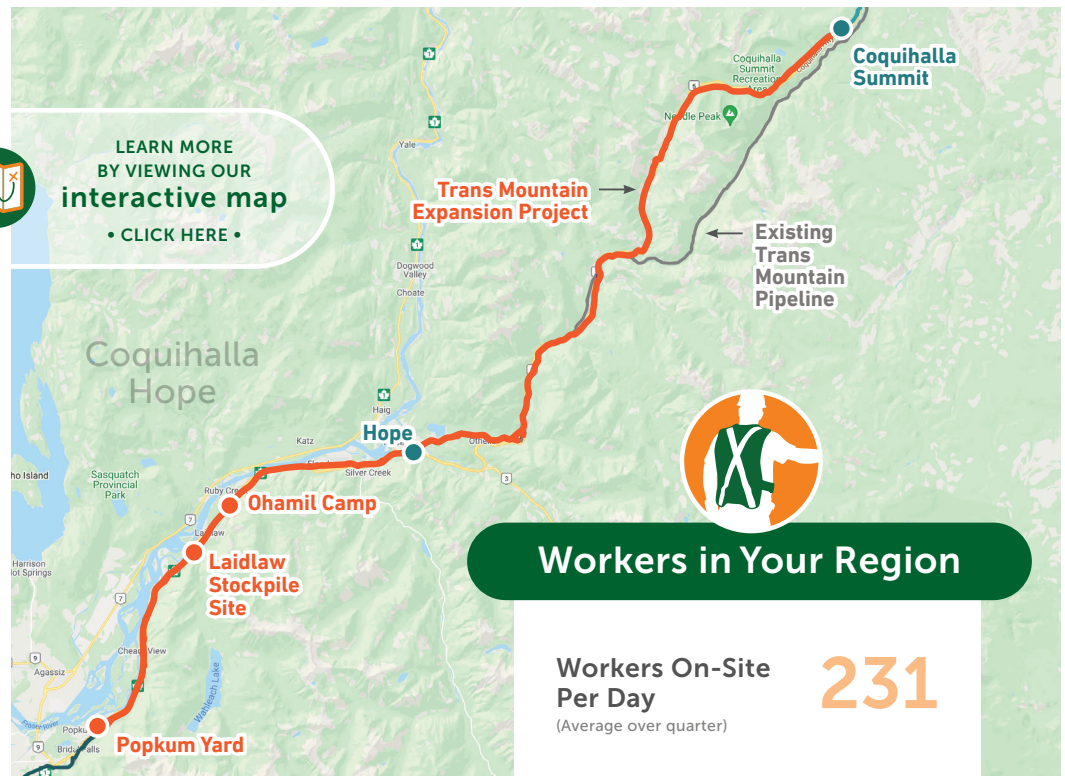
Health and safety for our workers, their families and communities is a top priority while maintaining safe construction activities during COVID-19. Trans Mountain and its Project contractors are adopting government and company health and safety measures to protect its workforce and ensure work can safely continue.

Trans Mountain is monitoring the impact of construction on pipeline communities through a series of indicators identified in the Socio-Economic Effects Monitoring Plan. This Project impact information is gathered for each three-month period in a regional Socio-Economic Monitoring Report. Highlights from the quarterly regional report are provided here.

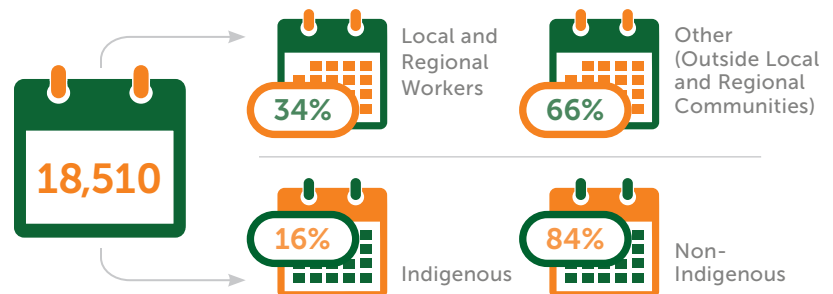
Go to/click here transmountain.com/socio-economic-reports to view the complete Socio-Economic Monitoring Report for this region.



LEARN MORE
BY VIEWING OUR
interactive map
• CLICK HERE •



Three-Month Total of Worker Days On-Site in Reporting Period



Anticipated Worker Days On-Site in the Next Reporting Period*

*Estimate at end of reporting period; subject to change. Does not reflect construction re-start.



Worker Accommodation Nights



4,625

At Home



6,745

Local Accommodation



7,140

Camp Community
(1 camp in this region)



\$1,241,725

Total Living Out Allowance Paid to Workers



Worker Health and Medical Services

Number of
Times Sent to
Local Health
Care Facility



Use of
Ambulance
or Other Public
Emergency
Transport



Vehicles

Vehicles Parked
in Staging Area*
(Daily Average)

72



Workers Transported from
Staging Area to Job Site
(Daily Average)

75



* Personal vehicles. No active TMEP yard/staging area during this period.
Vehicles parked in Hope. Vehicle numbers based on average of mid and
end of month counts.



Construction Inquiries and Topics**

Trans Mountain is committed to
addressing any complaints related
to operations and construction.

Total number
for this Quarter



Sensory
Disturbances



Security-related lights (tower and patrol traffic) from Ohamil Camp shining into window of home. Technician drove to the Ohamil Camp and ensured the light was turned off. Also, security night patrol route has been redirected to lessen the impact of security vehicle lights shining into the home.

Traffic



Private vehicle on Laidlaw Road. Trans Mountain followed up with the driver who had taken a wrong turn. Trans Mountain continues to reinforce the voluntary restricted use of Laidlaw Road segment.

Business
Impacts



Business parking lot disturbed by construction activity. Trans Mountain is working directly with the business owner/Indigenous group to confirm timing and details of completion of construction activities in this location.

Property
Impact



Camp security sensor perimeter wires partially located on neighbour property. Concern of damage to fence. Trans Mountain conducted a site visit and determined that some security wire had been inadvertently located on the individual's property. Trans Mountain relocated the wires and is reviewing the concern about possible fence damage and assessing need for compensation.

Traditional
Land Use
Discovery



Felling of Two Culturally Modified Trees. Trans Mountain follows the Traditional Land Use Sites Discovery Contingency Plan if a previously unidentified traditional use site is found during construction. Resources were flagged and Indigenous groups engaged. The trees will be repatriated to a local Indigenous group.

** Socio-economic topics only. Data in this report is reflective of activities specific to active construction of the Trans Mountain Expansion Project. Data does not reflect Trans Mountain's ongoing operations and maintenance or inquiries related to future construction activities.

† Inquiries from same individual/household on same topic are considered same inquiry. May be multiple inquiries on similar theme.

CONTACT US:

Trans Mountain Expansion Project

✉ info@transmountain.com

☎ 1.866.514.6700

🌐 transmountain.com

🐦 [@TransMtn](https://twitter.com/TransMtn)

📍 PO Box 81018, Burnaby, BC
V5H 3B0 CANADA

📺 youtube.com/transmtn

🌐 [linkedin.com/company/transmountain](https://www.linkedin.com/company/transmountain)



TRANSMOUNTAIN