

**Construction related to the Trans Mountain Expansion Project is underway in your region.**

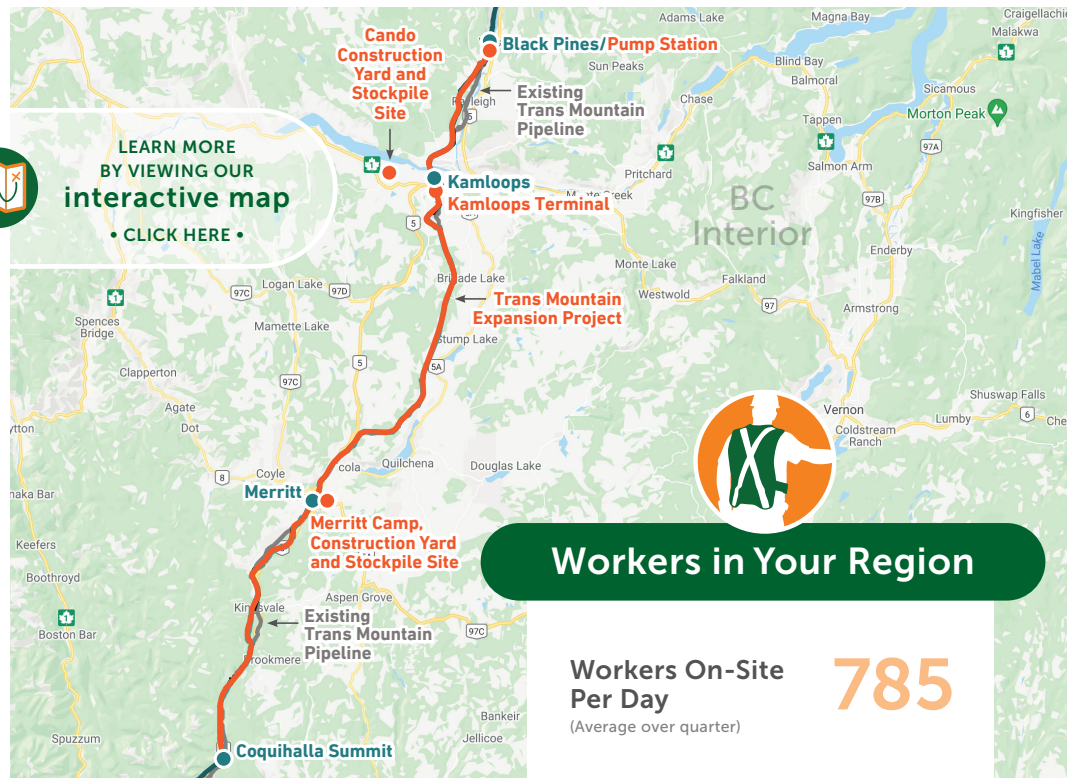
Health and safety for our workers, their families and communities is a top priority while maintaining safe construction activities during COVID-19. Trans Mountain and its Project contractors are adopting government and company health and safety measures to protect its workforce and ensure work can safely continue.

Trans Mountain is monitoring the impact of construction on pipeline communities through a series of indicators identified in the Socio-Economic Effects Monitoring Plan. This Project impact information is gathered for each three-month period in a regional Socio-Economic Monitoring Report. Highlights from the quarterly regional report are provided here.

Go to/click here [transmountain.com/socio-economic-reports](https://transmountain.com/socio-economic-reports) to view the complete Socio-Economic Monitoring Report for this region.



LEARN MORE  
BY VIEWING OUR  
**interactive map**  
• CLICK HERE •

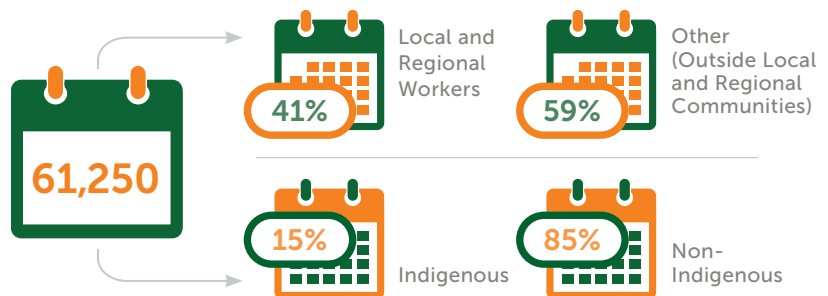


## Workers in Your Region

Workers On-Site  
Per Day  
(Average over quarter)

**785**

Three-Month  
Total of  
Worker Days  
On-Site in  
Reporting  
Period



Anticipated  
Worker Days  
On-Site  
in the Next  
Reporting  
Period\*

\*Estimate at end of  
reporting period;  
subject to change.



## Worker Accommodation Nights



**9,220**

At Home



**52,025**

Local Accommodation



**0**

Camp Community



Total Living  
Out Allowance  
Paid to Workers



## Worker Health and Medical Services

Number of  
Times Sent to  
Local Health  
Care Facility



Use of  
Ambulance  
or Other Public  
Emergency  
Transport

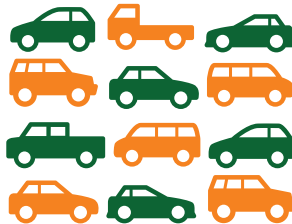


## Vehicles

Vehicles Parked  
in Staging Area\*  
(Daily Average)

443

\* Personal vehicles.  
Vehicle numbers based  
on average of mid and  
end of month counts.



Workers Transported from  
Staging Area to Job Site  
(Daily Average)

729



## Construction Inquiries and Topics\*

Trans Mountain is committed to  
addressing any complaints related  
to operations and construction.

Total number  
for this Quarter



Traffic



### Project-related traffic around Kamloops and damage to a personal vehicle.

Contractors have a Traffic Management Plan addressing public protection measures, access roads/routes to the construction site and Traffic Control Plans for each work zone. Trans Mountain follows up with the contractor to ensure traffic-related requirements are followed.

### Indigenous group complaints regarding traffic/driving on Highway 5a. Slow-moving Project-related vehicles driving in single line making it difficult to pass and an observation of unsafe passing.

Trans Mountain followed up with the contractor to ensure traffic-related requirements are being met. Regarding unsafe passing, the crew supervisor had meeting with the crew regarding safe driving practices and the individual reported has acknowledged his mistake and disciplinary action was taken. Regarding travel speeds, workers are required to obey speed limits.

Sensory  
Disturbances



### Project-related dust near Westsyde Road, Bachelor Heights and Black Pines Pump Station.

Trans Mountain follows up on dust and debris complaints to confirm their relation to Project activity. Trans Mountain works to ensure compliance with bylaws and requirements. Trans Mountain works with stakeholders to resolve and address such complaints where practical. Trans Mountain advised that sites are being watered, however, given the dry conditions the frequency will be increased.

\* Socio-economic topics related  
to community impacts only.  
Data in this report is reflective  
of activities specific to active  
construction of the Trans Mountain  
Expansion Project. Data does not  
reflect Trans Mountain's ongoing  
operations and maintenance  
or inquiries related to future  
construction activities.

† Inquiries from same individual/  
household on same topic are  
considered same inquiry. May be  
multiple inquiries on similar theme.

### CONTACT US:

Trans Mountain

✉ [info@transmountain.com](mailto:info@transmountain.com)

☎ 1.866.514.6700

🌐 [transmountain.com](http://transmountain.com)

🐦 [@TransMtn](https://twitter.com/TransMtn)

📮 PO Box 81018, Burnaby, BC  
V5H 3B0 CANADA

📺 [youtube.com/transmtn](https://youtube.com/transmtn)

📘 [linkedin.com/company/transmountain](https://www.linkedin.com/company/transmountain)



**TRANSMOUNTAIN**