

Construction related to the Trans Mountain Expansion Project is underway in your region.

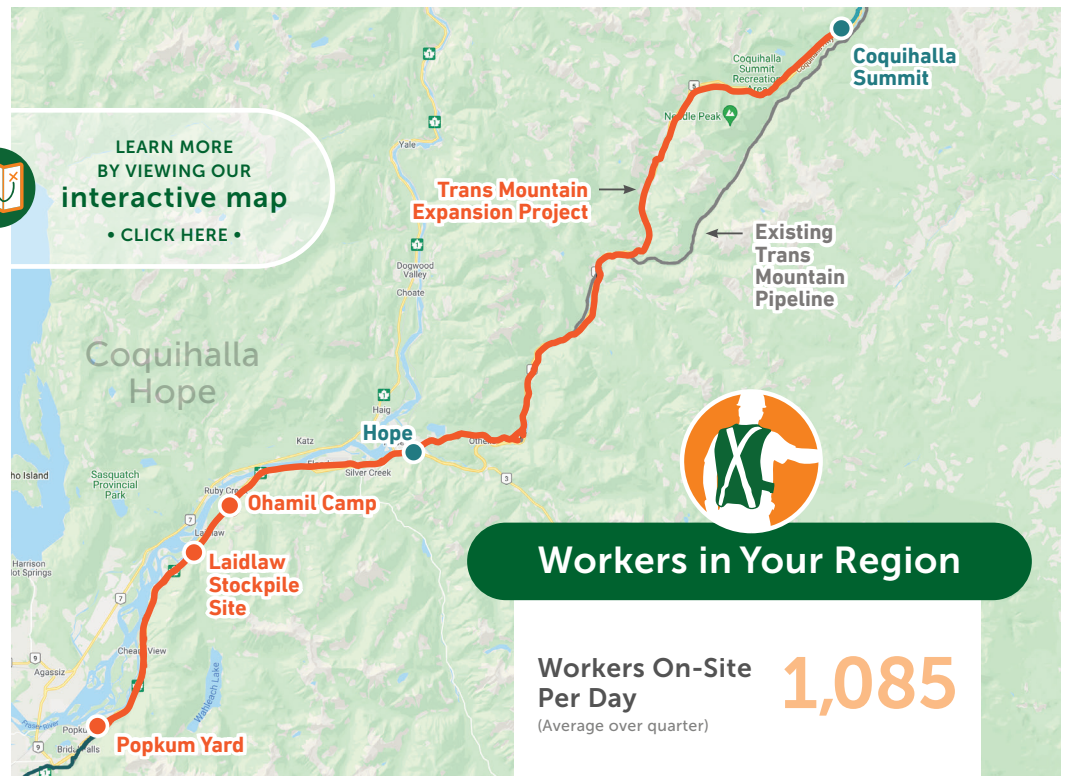
Health and safety for our workers, their families and communities is a top priority while maintaining safe construction activities during COVID-19. Trans Mountain and its Project contractors are adopting government and company health and safety measures to protect its workforce and ensure work can safely continue.

Trans Mountain is monitoring the impact of construction on pipeline communities through a series of indicators identified in the Socio-Economic Effects Monitoring Plan. This Project impact information is gathered for each three-month period in a regional Socio-Economic Monitoring Report. Highlights from the quarterly regional report are provided here.

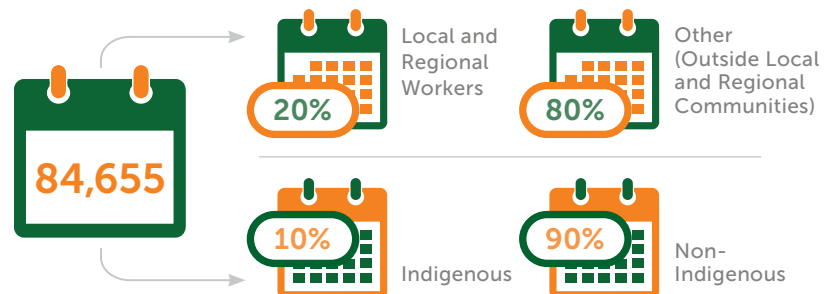
Go to/click here transmountain.com/socio-economic-reports to view the complete Socio-Economic Monitoring Report for this region.



LEARN MORE
BY VIEWING OUR
interactive map
• CLICK HERE •



Three-Month Total of Worker Days On-Site in Reporting Period



Anticipated Worker Days On-Site in the Next Reporting Period*

*Estimate at end of reporting period; subject to change.



Worker Accommodation Nights



7,780

At Home



56,715

Local Accommodation



20,160

Camp Community
(1 camp in this region)

Total Living Out Allowance Paid to Workers





Worker Health and Medical Services

Number of
Times Sent to
Local Health
Care Facility



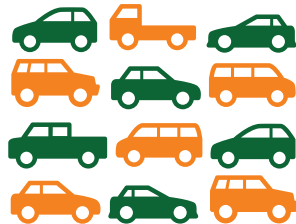
Use of
Ambulance
or Other Public
Emergency
Transport



Vehicles

Vehicles Parked
in Staging Area*
(Daily Average)

1,201



Workers Transported from
Staging Area to Job Site
(Daily Average)

358



* Personal vehicles. No active TMEP yard/staging area during this period. Vehicles parked in Hope. Vehicle numbers based on average of mid- and end-of-month counts.



Construction Inquiries and Topics*

Trans Mountain is committed to addressing any complaints related to operations and construction.

Total number
for this Quarter



* Socio-economic topics related to community impacts only. Data in this report is reflective of activities specific to active construction of the Trans Mountain Expansion Project. Data does not reflect Trans Mountain's ongoing operations and maintenance or inquiries related to future construction activities.

† Inquiries from same individual/household on same topic are considered same inquiry. May be multiple inquiries on similar theme.

Worker
Conduct



Workers not following COVID-19 protocols, Laidlaw area.

In response to the COVID-19 pandemic, Trans Mountain and construction contractors continue to follow all direction from government and health officials. Health and Safety personnel frequently monitor for compliance on sites. For more information on Trans Mountain's COVID response visit: transmountain.com/covid19. Trans Mountain Security asked for further information to investigate.

Traffic



Rock from alleged Project-related truck causing vehicle damage; truck traffic along Laidlaw Road. • Waste management company access limitations due to congestion on Flood Hope Road. • Vehicle access limited on Road 64. Contractors have a Traffic Management Plan addressing public protection measures, access roads/routes to the construction site and Traffic Control Plans for each work zone. Trans Mountain follows up with the contractor to ensure traffic-related requirements are met. For example, regarding business impacts, the Trans Mountain construction team and flaggers are aware waste trucks should be let through.

Business
Impacts



Sensory
Disturbances



Laidlaw area vibration impacts to house foundation; noise and vibration from sheet piling and pile driving. • Lighting in the Laidlaw area. Trans Mountain is working to ensure compliance with bylaws and requirements. Trans Mountain will work with stakeholders to resolve and address such complaints where practical.

Traditional
Land Use



Workers potentially using local fishing areas. Trans Mountain Code of Conduct requires that workers' use and enjoyment of the environment when off-duty must be done in full compliance with all laws and regulations. Workers are prohibited from hunting, fishing, trapping and gathering plants within or along the right-of-way and at other construction sites. Fishing equipment, snowmobiles and all-terrain vehicles not used for work are prohibited at worksites and in work vehicles. No particular location or incident was noted.

Access



Trail access around the District of Hope. Trans Mountain will continue to follow up on any access-related or business impact concerns. Each complaint is examined to provide additional information and/or appropriate followup. In this instance, the matting has been trimmed and a smooth edge to the path has been created. Also, additional signage provided to help guide cyclists and pedestrians in this area.

COMMITTED TO SAFETY SINCE 1953.

transmountain.com | info@transmountain.com | 1.866.514.6700



TRANSMOUNTAIN