

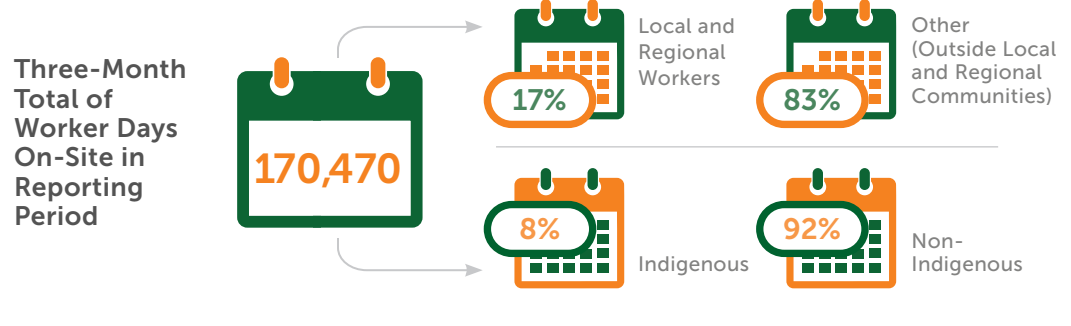
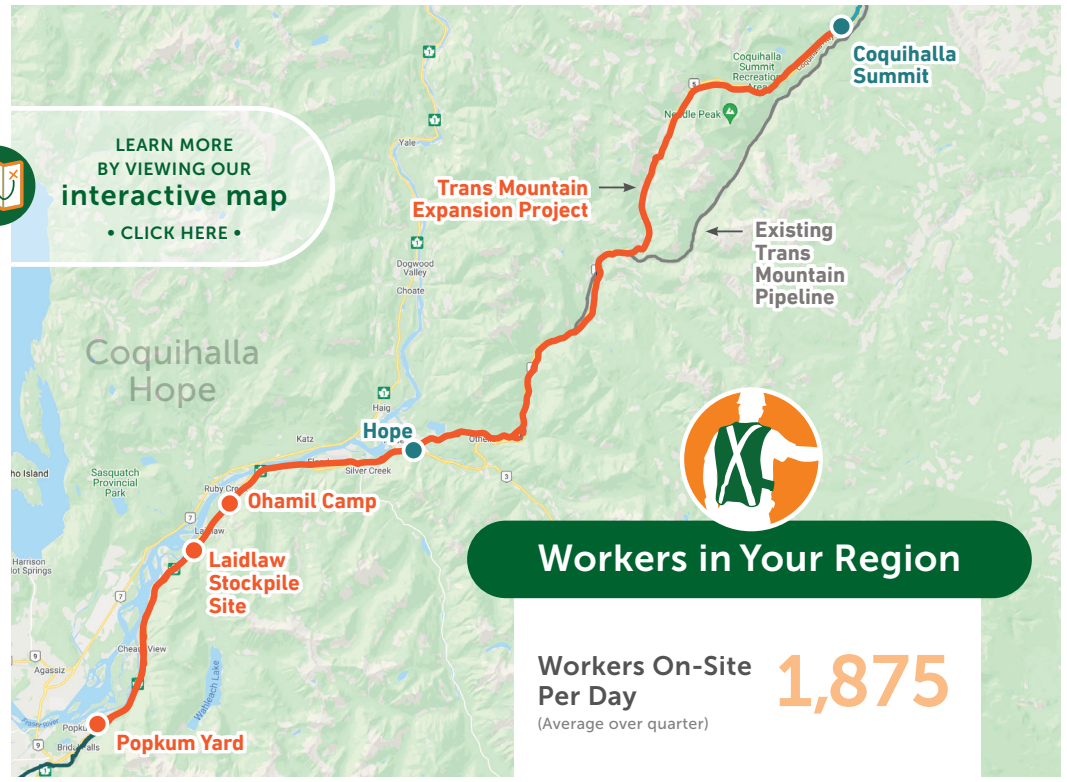
Construction related to the Trans Mountain Expansion Project is underway in your region.

Trans Mountain and its contractors make it a top priority to protect our workers and communities by following government and company health and safety measures as construction continues.

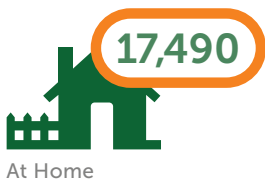
Trans Mountain is monitoring the impact of construction on pipeline communities through a series of indicators identified in the Socio-Economic Effects Monitoring Plan. This Project impact information is gathered for each three-month period in a regional Socio-Economic Monitoring Report. Highlights from the quarterly regional report are provided here.

Go to/click here transmountain.com/socio-economic-reports to view the complete Socio-Economic Monitoring Report for this region.

LEARN MORE BY VIEWING OUR interactive map • CLICK HERE •



Worker Accommodation Nights





Worker Health and Medical Services

Number of Times Sent to Local Health Care Facility



Use of Ambulance or Other Public Emergency Transport



Vehicles

Vehicles Parked in Staging Area*
(Daily Average)

849



Workers Transported from Staging Area to Job Site
(Daily Average)

1,101



* Personal vehicles. Vehicle numbers based on average of mid- and end-of-month counts.



Construction Inquiries and Topics*

Trans Mountain is committed to addressing any complaints related to operations and construction.

Total number for this Quarter



Sensory Disturbances



Hope residents complained of cracks in foundation and drywall due to Project-related vibration; dust in the Kawkawa Lake Road area and on Elder Road; Project-related day and night noise in Hope; overnight noise at the Mountain Road Retreat.

Trans Mountain works to ensure compliance with bylaws and requirements, and works with stakeholders to resolve and address such complaints where practical. Regarding dust in the Kawkawa Lake Road area and on Elder Road, the sweeper will monitor the area closely and have more sweepers deployed throughout the day.

Safety fencing visual disturbance to business billboards.

The mesh fencing is safety related. Trans Mountain is working directly with the community leadership (Shxw'ow'hamel First Nation) to assess and address the business impact.

* Socio-economic topics related to community impacts only. Data in this report is reflective of activities specific to active construction of the Trans Mountain Expansion Project. Data does not reflect Trans Mountain's ongoing operations and maintenance or inquiries related to future construction activities.

† Inquiries from same individual/household on same topic are considered same inquiry. May be multiple inquiries on similar theme.

Traffic/Driving



Residents concern about vehicle speeding on Birchtrees Drive, Hunter Creek Road and Acacia Drive; resident concern about use of engine retarder brakes near Othello Road; alleged impact to vehicle from automated flagger arm; Hope resident concern about a contractor's truck erratic driving; damage to car as a result of debris on the roadway.

Contractors have a Traffic Management Plan that addresses public protection measures, access roads/routes to the construction site and Traffic Control Plans for each work zone, which consider potential impacts with mitigation. Trans Mountain follows up with the contractor to ensure traffic-related requirements are being met. Each complaint is examined to provide additional information and/or appropriate followup.

HEALTH AND SAFETY IS A SHARED RESPONSIBILITY.

transmountain.com | info@transmountain.com | 1.866.514.6700



TRANSMOUNTAIN