



TRANSMOUNTAIN

# Monitoring Socio-Economic Impacts of Construction Jasper–Mt. Robson Highlights

Reporting Period: January – March 2023

Construction related to the Trans Mountain Expansion Project is underway in your region.

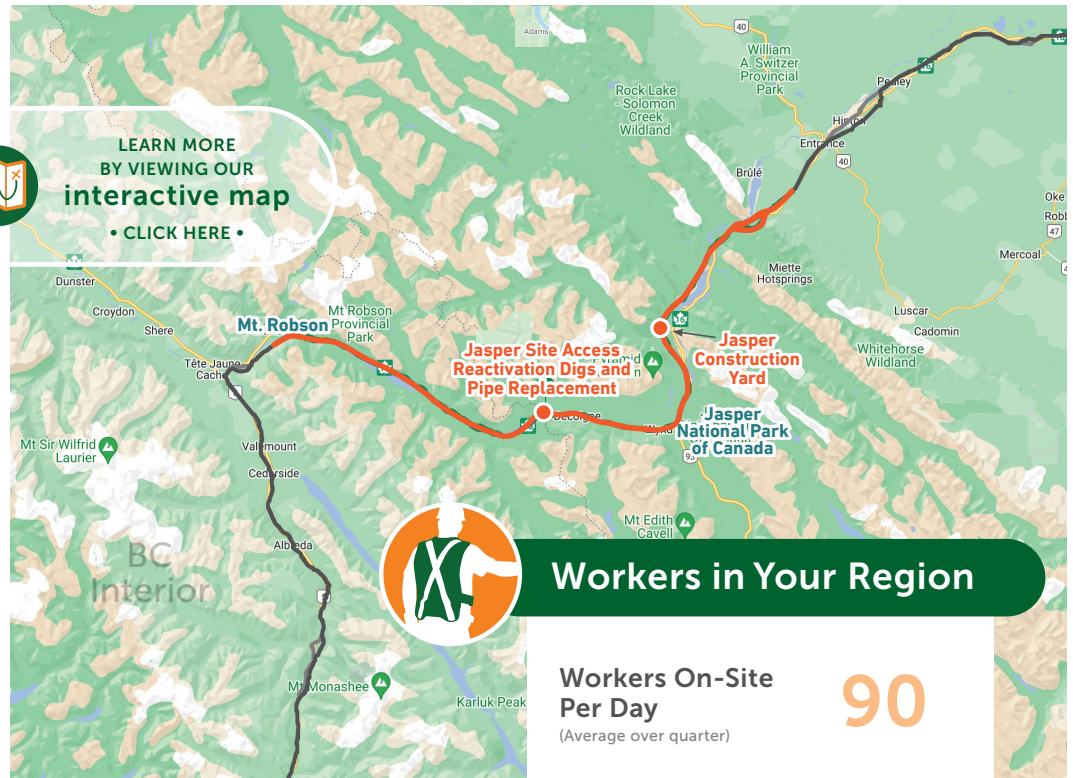
Trans Mountain and its contractors make it a top priority to protect our workers and communities by following government and company health and safety measures as construction continues.

Trans Mountain is monitoring the impact of construction on pipeline communities through a series of indicators identified in the Socio-Economic Effects Monitoring Plan. This Project impact information is gathered for each three-month period in a regional Socio-Economic Monitoring Report. Highlights from the quarterly regional report are provided here.

Go to/click here [transmountain.com/socio-economic-reports](https://transmountain.com/socio-economic-reports) to view the complete Socio-Economic Monitoring Report for this region.



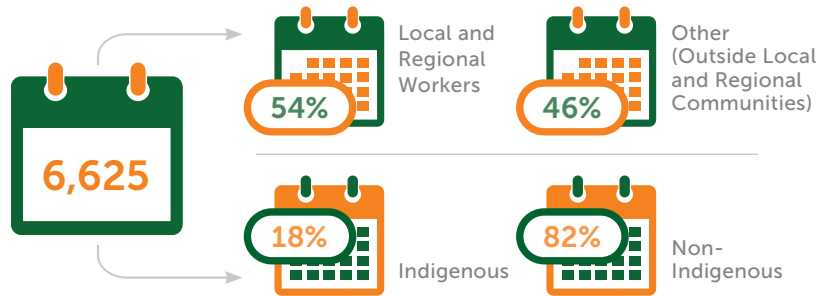
LEARN MORE BY VIEWING OUR interactive map  
• CLICK HERE •



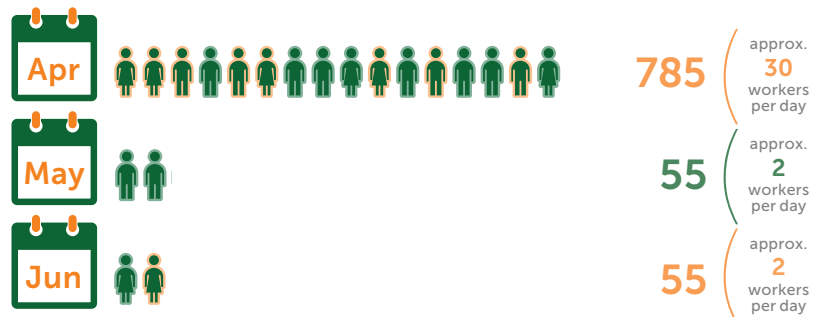
## Workers in Your Region

Workers On-Site Per Day (Average over quarter) **90**

Three-Month Total of Worker Days On-Site in Reporting Period



Anticipated Worker Days On-Site in the Next Reporting Period\*



\*Estimate at end of reporting period; subject to change.

Worker Accommodation Nights



Total Living Out Allowance Paid to Workers





## Worker Health and Medical Services

Number of Times Sent to Local Health Care Facility



Use of Ambulance or Other Public Emergency Transport



## Vehicles

Vehicles Parked in Staging Area\*  
(Daily Average)

14

\* Personal vehicles.  
Vehicle numbers based on average of mid- and end-of-month counts.



Workers Transported from Staging Area to Job Site  
(Daily Average)

95



## Construction Inquiries and Topics\*

Trans Mountain is committed to addressing any complaints related to operations and construction.

Total number for this Quarter



\* Socio-economic topics related to community impacts only. Data in this report is reflective of activities specific to active construction of the Trans Mountain Expansion Project. Data does not reflect Trans Mountain's ongoing operations and maintenance or inquiries related to future construction activities.

† Inquiries from same individual/household on same topic are considered same inquiry. May be multiple inquiries on similar theme.

HEALTH AND SAFETY IS A SHARED RESPONSIBILITY.

[transmountain.com](http://transmountain.com) | [info@transmountain.com](mailto:info@transmountain.com) | 1.866.514.6700



TRANSMOUNTAIN