

Construction related to the Trans Mountain Expansion Project is underway in your region.

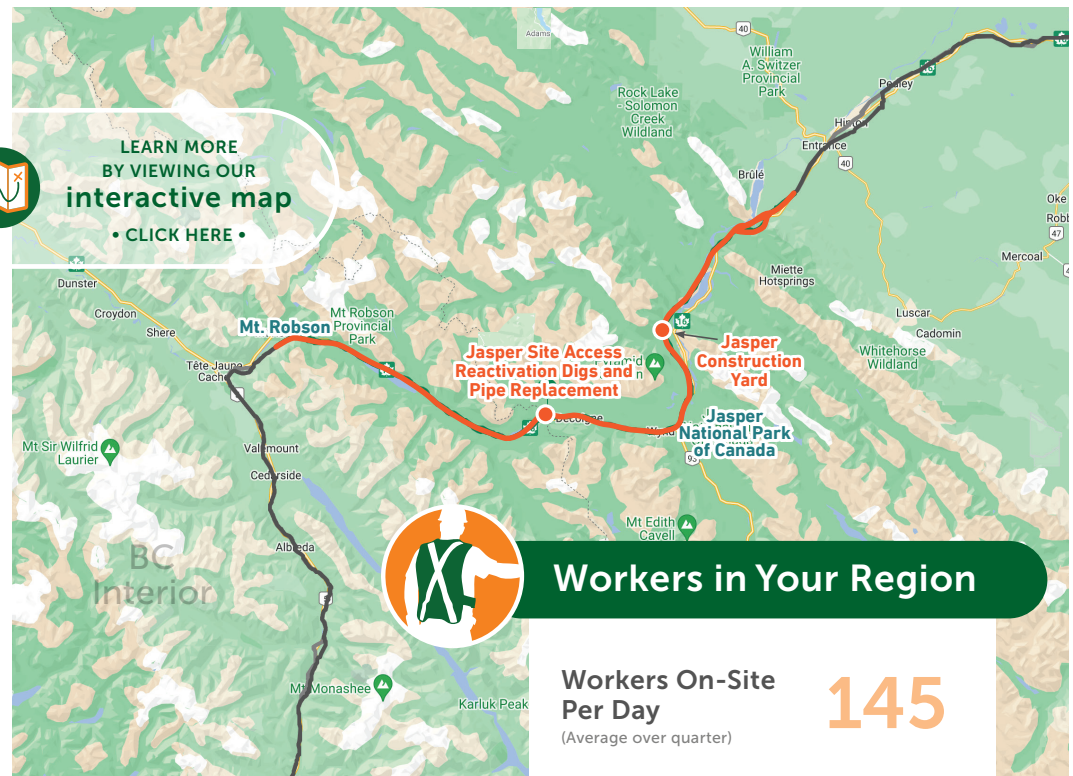
Health and safety for our workers, their families and communities is a top priority while maintaining safe construction activities during COVID-19. Trans Mountain and its Project contractors are adopting government and company health and safety measures to protect its workforce and ensure work can safely continue.

Trans Mountain is monitoring the impact of construction on pipeline communities through a series of indicators identified in the Socio-Economic Effects Monitoring Plan. This Project impact information is gathered for each three-month period in a regional Socio-Economic Monitoring Report. Highlights from the quarterly regional report are provided here.

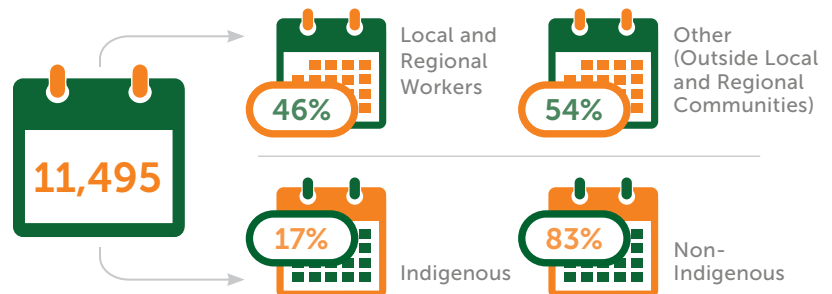
Go to/click here transmountain.com/socio-economic-reports to view the complete Socio-Economic Monitoring Report for this region.



LEARN MORE
BY VIEWING OUR
interactive map
• CLICK HERE •

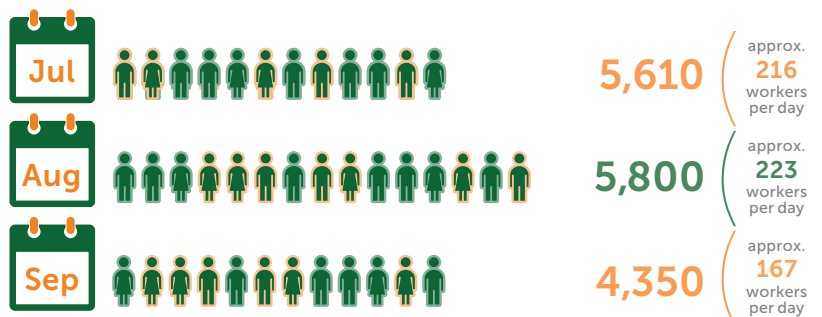


Three-Month Total of Worker Days On-Site in Reporting Period



Anticipated Worker Days On-Site in the Next Reporting Period*

*Estimate at end of reporting period; subject to change.



Worker Accommodation Nights



Total Living Out Allowance Paid to Workers





Worker Health and Medical Services

Number of
Times Sent to
Local Health
Care Facility



Use of
Ambulance
or Other Public
Emergency
Transport

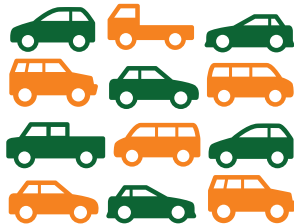


Vehicles

Vehicles Parked
in Staging Area*
(Daily Average)

49

* Personal vehicles.
Vehicle numbers based
on average of mid- and
end-of-month counts.



Workers Transported from
Staging Area to Job Site
(Daily Average)

188



Construction Inquiries and Topics*

Trans Mountain is committed to
addressing any complaints related
to operations and construction.

Total number
for this Quarter



Worker
Accommodation



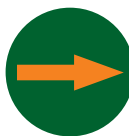
**Project workers using local accommodation
contributing to rental housing pressures.**

Trans Mountains continues to engage with the Municipality of Jasper to cooperatively identify and implement available solutions on issues related to presence of temporary workforce residing in the community. Many Project workers are using recreational vehicles rather than local housing. Project-related workforce is anticipated to start reducing in August 2022. Trans Mountain continues to share information about its workforce to facilitate community readiness and business planning.

* Socio-economic topics related
to community impacts only.
Data in this report is reflective
of activities specific to
active construction of the
Trans Mountain Expansion
Project. Data does not reflect
Trans Mountain's ongoing
operations and maintenance
or inquiries related to future
construction activities.

† Inquiries from same
individual/household on
same topic are considered
same inquiry. May be multiple
inquiries on similar theme.

Access



Road closure preventing hiking.

The road in question was not a public road
and is meant for construction use.

COMMITTED TO SAFETY SINCE 1953.

transmountain.com | info@transmountain.com | 1.866.514.6700



TRANSMOUNTAIN