

Construction related to the Trans Mountain Expansion Project is underway in your region.

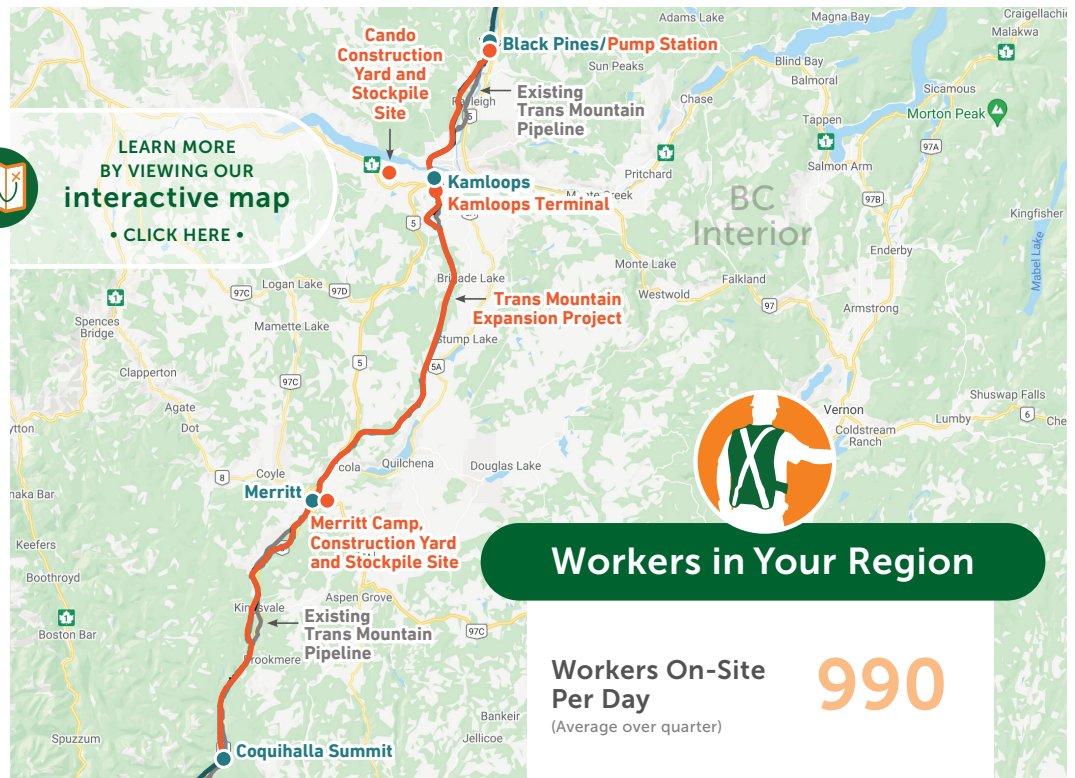
Health and safety for our workers, their families and communities is a top priority while maintaining safe construction activities during COVID-19. Trans Mountain and its Project contractors are adopting government and company health and safety measures to protect its workforce and ensure work can safely continue.

Trans Mountain is monitoring the impact of construction on pipeline communities through a series of indicators identified in the Socio-Economic Effects Monitoring Plan. This Project impact information is gathered for each three-month period in a regional Socio-Economic Monitoring Report. Highlights from the quarterly regional report are provided here.

Go to/click here transmountain.com/socio-economic-reports to view the complete Socio-Economic Monitoring Report for this region.



LEARN MORE
BY VIEWING OUR
interactive map
• CLICK HERE •

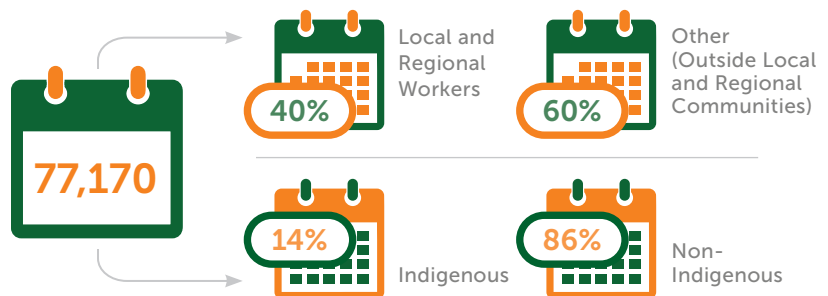


Workers in Your Region

**Workers On-Site
Per Day**
(Average over quarter)

990

**Three-Month
Total of
Worker Days
On-Site in
Reporting
Period**



**Anticipated
Worker Days
On-Site
in the Next
Reporting
Period***

*Estimate at end of reporting period; subject to change.



Worker Accommodation Nights



9,010

At Home



58,670

Local Accommodation



9,485

Camp Community





Worker Health and Medical Services

Number of
Times Sent to
Local Health
Care Facility



Use of
Ambulance
or Other Public
Emergency
Transport

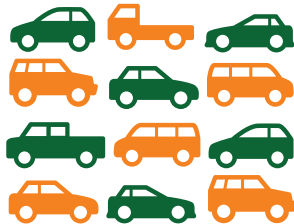


Vehicles

Vehicles Parked
in Staging Area*
(Daily Average)

467

* Personal vehicles.
Vehicle numbers based
on average of mid- and
end-of-month counts.



Workers Transported from
Staging Area to Job Site
(Daily Average)

751



Construction Inquiries and Topics*

Trans Mountain is committed to
addressing any complaints related
to operations and construction.

Total number
for this Quarter



* Socio-economic topics related
to community impacts only.
Data in this report is reflective
of activities specific to
active construction of the
Trans Mountain Expansion
Project. Data does not reflect
Trans Mountain's ongoing
operations and maintenance
or inquiries related to future
construction activities.

† Inquiries from same
individual/household on
same topic are considered
same inquiry. May be multiple
inquiries on similar theme.

Traffic/
Driving



Driving conduct in/near Kamloops.

Contractors have a Traffic Management Plan addressing public protection measures, access roads/routes to the construction site and Traffic Control Plans for each work zone. Trans Mountain follows up with the contractor to ensure traffic-related requirements are met. For example, crews were reminded about importance of using radios where required.

Concern regarding the use of driveway and property damage.

In this instance, Trans Mountain has followed up directly with the individual regarding the property-specific concerns.

Sensory
Disturbances



Dust along O'Connor Lake Road and Midday Valley Road.

Trans Mountain is working to ensure compliance with bylaws and requirements. Trans Mountain will work with stakeholders to resolve and address such complaints where practical. Contractor has schedule to mitigate dust and maintain road conditions.

Dust concerns around Farm Fox Road.

Dust concerns have been addressed with active dust suppression.

Access



Traffic sign and vehicles blocking driveways.

Each complaint is examined to provide additional information and/or appropriate followup. In these instances, the contractor advised that no signage is to be placed within the driveways in future and there was follow up on the particular location of the individual's driveway.

COMMITTED TO SAFETY SINCE 1953.

transmountain.com | info@transmountain.com | 1.866.514.6700



TRANSMOUNTAIN