



TRANSMOUNTAIN

Monitoring Socio-Economic Impacts of Construction

BC Interior Highlights

Reporting Period: October–December 2023

Construction related to the Trans Mountain Expansion Project is underway in your region.

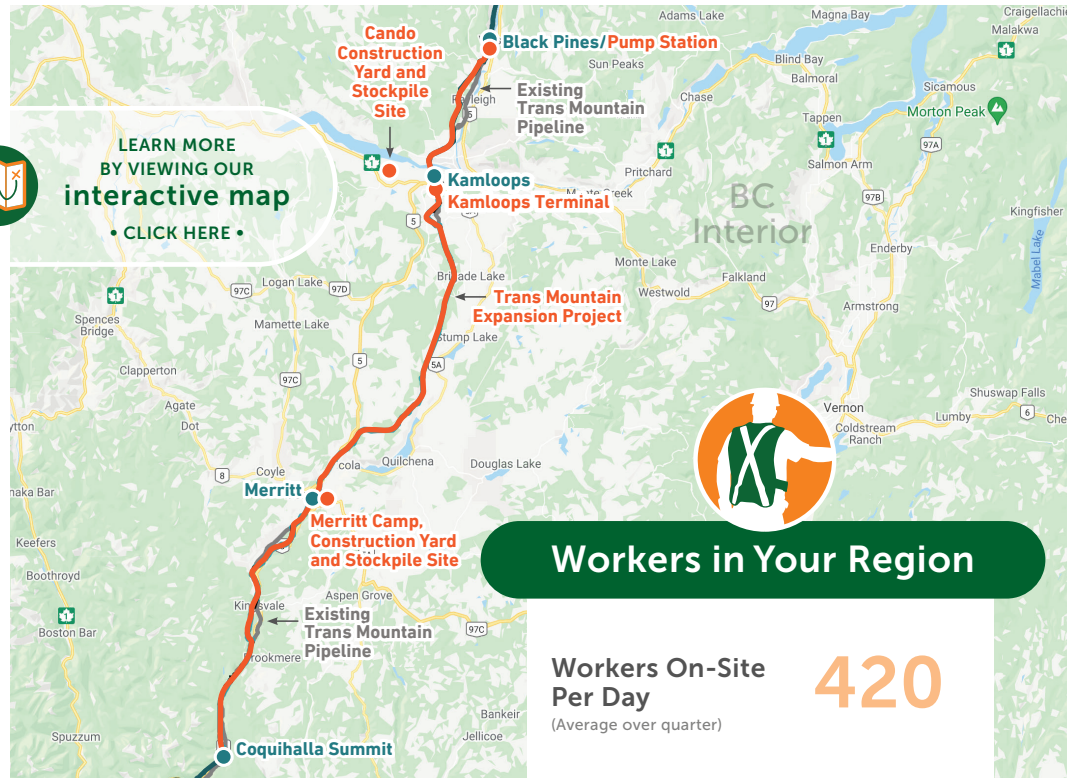
Trans Mountain and its contractors make it a top priority to protect our workers and communities by following government and company health and safety measures as construction continues.

Trans Mountain is monitoring the impact of construction on pipeline communities through a series of indicators identified in the Socio-Economic Effects Monitoring Plan. This Project impact information is gathered for each three-month period in a regional Socio-Economic Monitoring Report. Highlights from the quarterly regional report are provided here.

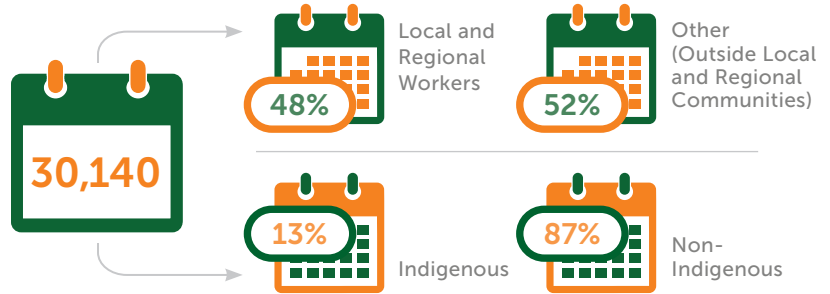
Go to/click here transmountain.com/socio-economic-reports to view the complete Socio-Economic Monitoring Report for this region.



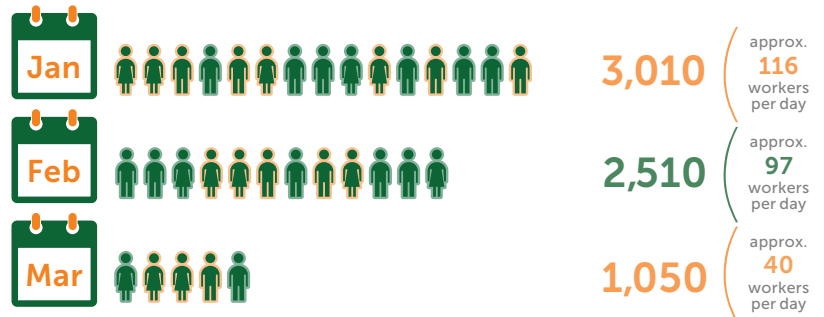
LEARN MORE BY VIEWING OUR interactive map
• CLICK HERE •



Three-Month Total of Worker Days On-Site in Reporting Period



Anticipated Worker Days On-Site in the Next Reporting Period*



*Estimate at end of reporting period; subject to change.

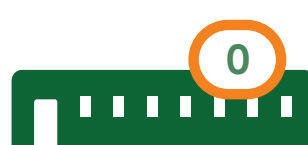
Worker Accommodation Nights



At Home



Local Accommodation



Camp Community (camp closed in this region)



Total Living Out Allowance Paid to Workers



Worker Health and Medical Services

Number of Times Sent to Local Health Care Facility



Use of Ambulance or Other Public Emergency Transport

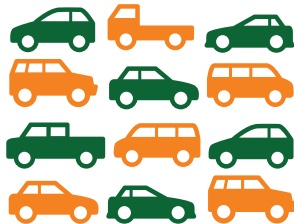


Vehicles

Vehicles Parked in Staging Area*
(Daily Average)

203

* Personal vehicles. Vehicle numbers based on average of mid- and end-of-month counts.



Workers Transported from Staging Area to Job Site
(Daily Average)

343



Construction Inquiries and Topics*

Trans Mountain is committed to addressing any complaints related to operations and construction.

Total number for this Quarter



Environmental Concerns



Equipment, signs and flagging left behind in Kamloops by contractor.

Environmental mitigation measures are outlined in Project Environmental Protection Plans. Remaining equipment, materials and signage were removed by the contractor.

Traffic/Driving



Crews using high beams; driving conduct in Kamloops.

Contractors have a Traffic Management Plan that addresses public protection measures, access roads/routes to the construction site and Traffic Control Plans for each work zone that consider potential impacts with mitigation. Each complaint is examined to provide additional information and/or appropriate followup. In these instances, Trans Mountain followed up with the residents.

* Socio-economic topics related to community impacts only. Data in this report is reflective of activities specific to active construction of the Trans Mountain Expansion Project. Data does not reflect Trans Mountain's ongoing operations and maintenance or inquiries related to future construction activities.

† Inquiries from same individual/household on same topic are considered same inquiry. May be multiple inquiries on similar theme.

HEALTH AND SAFETY IS A SHARED RESPONSIBILITY.

transmountain.com | info@transmountain.com | 1.866.514.6700



TRANSMOUNTAIN