

Construction related to the Trans Mountain Expansion Project is underway in your region.

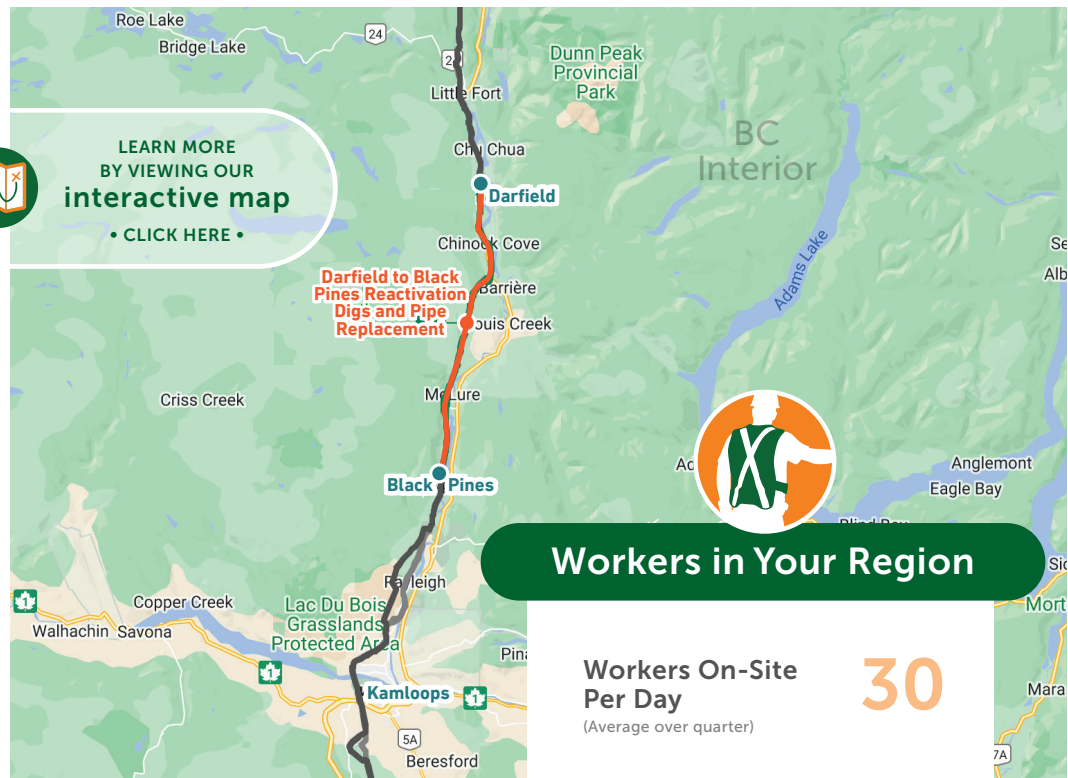
Trans Mountain and its contractors make it a top priority to protect our workers and communities by following government and company health and safety measures as construction continues.

Trans Mountain is monitoring the impact of construction on pipeline communities through a series of indicators identified in the Socio-Economic Effects Monitoring Plan. This Project impact information is gathered for each three-month period in a regional Socio-Economic Monitoring Report. Highlights from the quarterly regional report are provided here.

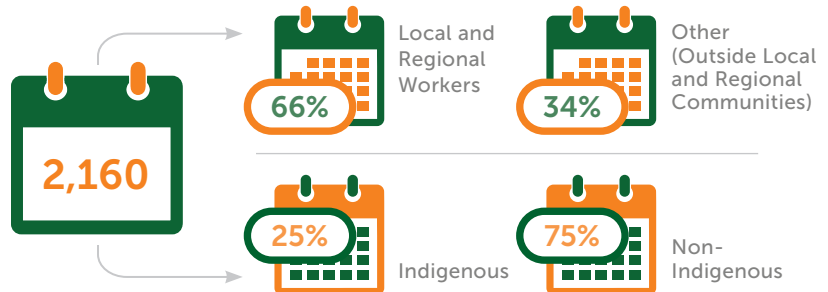
Go to/click here transmountain.com/socio-economic-reports to view the complete Socio-Economic Monitoring Report for this region.



LEARN MORE
BY VIEWING OUR
interactive map
• CLICK HERE •

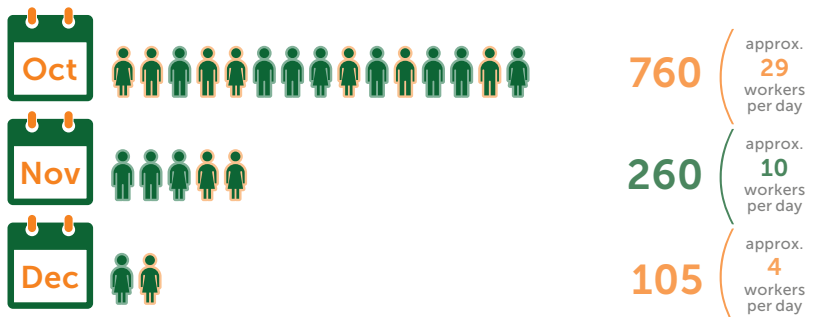


Three-Month Total of Worker Days On-Site in Reporting Period



Anticipated Worker Days On-Site in the Next Reporting Period*

*Estimate at end of reporting period; subject to change.



Worker Accommodation Nights



Total Living Out Allowance Paid to Workers





Worker Health and Medical Services

Number of
Times Sent to
Local Health
Care Facility



Use of
Ambulance
or Other Public
Emergency
Transport

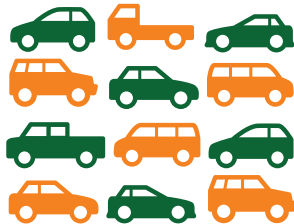


Vehicles

Vehicles Parked
in Staging Area*
(Daily Average)

13

* Personal vehicles.
Vehicle numbers based
on average of mid- and
end-of-month counts.



Workers Transported from
Staging Area to Job Site
(Daily Average)

101



Construction Inquiries and Topics*

Trans Mountain is committed to
addressing any complaints related
to operations and construction.

Total number
for this Quarter



Sensory
Disturbances



Noise Near Darfield Pump Station.

Trans Mountain is working to ensure compliance with bylaws and requirements. Trans Mountain will work with stakeholders to resolve and address such complaints where practical. In this instance, the inquirer was given the scope of the ongoing work at the Darfield Pump Station.

* Socio-economic topics related to community impacts only. Data in this report is reflective of activities specific to active construction of the Trans Mountain Expansion Project. Data does not reflect Trans Mountain's ongoing operations and maintenance or inquiries related to future construction activities.

† Inquiries from same individual/household on same topic are considered same inquiry. May be multiple inquiries on similar theme.

COMMITTED TO SAFETY SINCE 1953.

transmountain.com | info@transmountain.com | 1.866.514.6700



TRANSMOUNTAIN